



7079 Vale

# EXPLORATION OAK



	US Units	Metric Units
<b>Style Number</b>	<b>SW713</b>	
<b>Construction</b>	Engineered	
<b>Species</b>	Oak	
<b>Nominal Overall Thickness</b>	3/8"	8.2 mm
<b>Nominal Width</b>	6.38"	162.05 mm
<b>Finish</b>	Repel - Water Resist	
<b>Gloss Level</b>	7%	
<b>Surface Texture</b>	Wirebrushed	
<b>Edge Description</b>	Micro Bevel	
<b>End Description</b>	Mb	
<b>Profile</b>	Tongue And Groove	
<b>Weight per Carton</b>	45.6 lbs	20.68 kg
<b>SQFT per Carton</b>	30.48 sq ft	2.83 sq m
<b>SQFT per Pallet</b>	1371.6 sq ft	127.42 sq m
<b>Installation Methods</b>	Nail, Staple, Glue, Floating	
<b>Installation Grade</b>	Above, On, Below	
<b>Variation</b>	High	
<b>Ortho-Phthalates Free</b>	Yes	
<b>Radiant Heat Approved</b>	Yes	
<b>Residential Warranty</b>	Splash-Proof Lifetime	
<b>Commercial Warranty</b>	5 Year Commercial	
<b>Regional Availability</b>	Not Available in Canada	
All measurements are nominal.	Cartons may include random lengths.	

## Features

Clean and classic with timeless appeal, Exploration Oak from Shaw Floors creates a beautiful foundation for any room. This style is part of the REPEL Collection with Splash-Proof Technology that guards against splashes and spills 2x better than untreated hardwood. It also features superior dent resistance and ScufResist® Platinum finish to guard against scuffs.

## Suggested Adhesive

Style Name	Style Number
35MC	HS105

**Trim Pieces** length: 78" (\*Overlap Reducer and Overlap Stairnose are designed for floating installations only. These items are non-stocking - but are available through a quick-ship program. Delivery should take approximately 2 to 3 weeks.)



**SRW38**  
Flush Reducer



**SORW38**  
\*Overlap Reducer



**SSW38**  
Flush Stairnose



**SOSW8**  
\*Overlap Stairnose



**SCW38**  
Threshold / Carpet  
Reducer



**TMW78**  
T-Molding



**QTR96**  
Quarter Round

Trim images are for illustration purposes only. Actual dimensions will vary. Contact the Shaw Information Center for additional details: 800-441-7429.

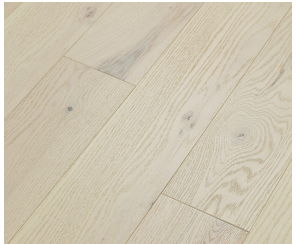


MADE IN THE USA

# EXPLORATION OAK



## Colors



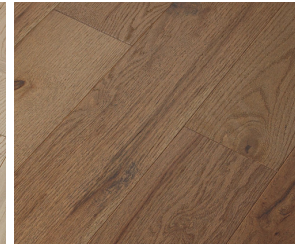
1088 Passage



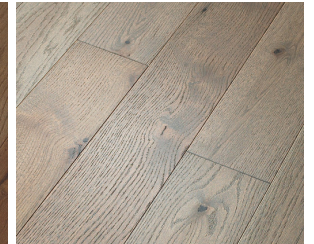
1089 Harbor



2055 Horizon



2058 Canyon



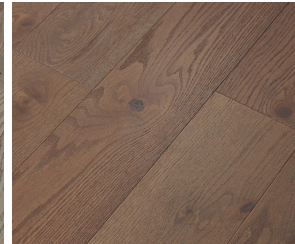
5094 Journey



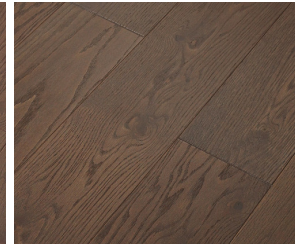
7074 Voyage



7075 Port



7077 Summit



7079 Vale