



# Razer Enki X | RZ38-03880 Support & FAQs

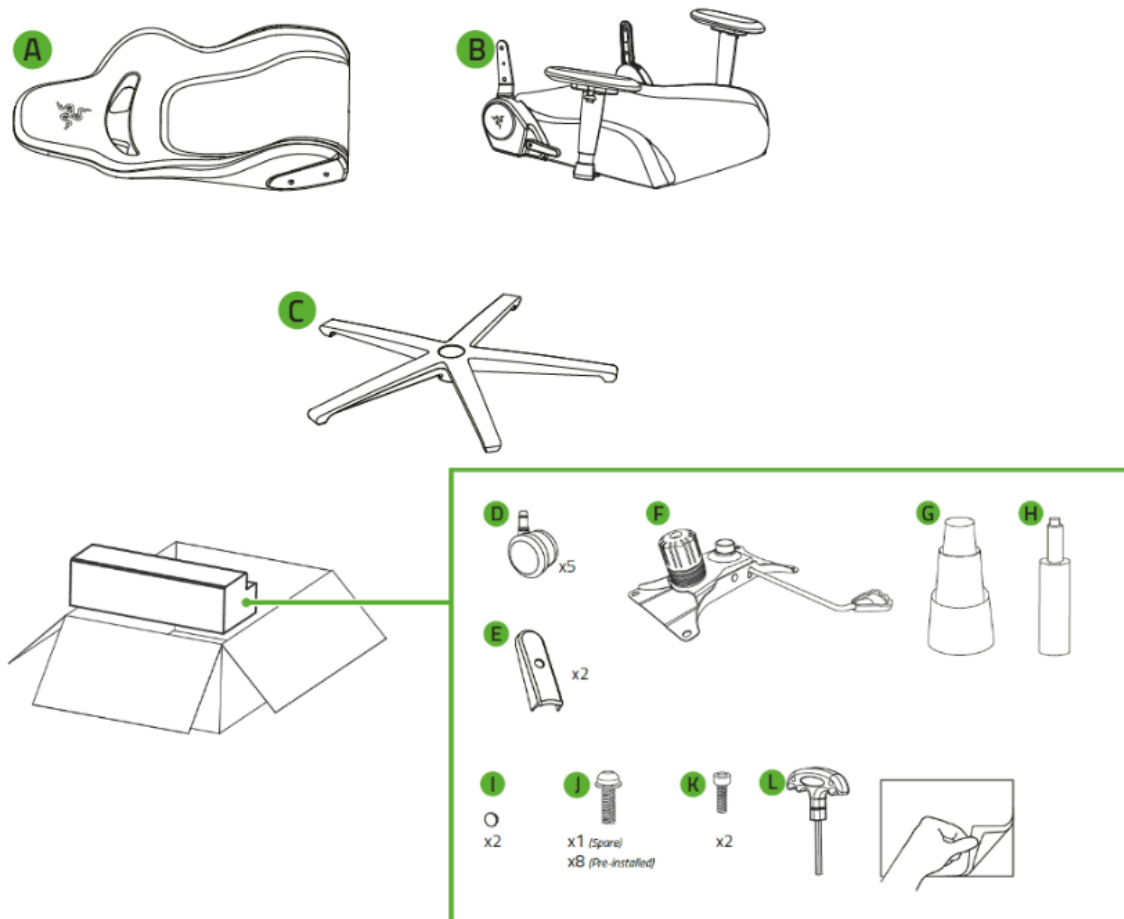
Updated: 11-Oct-2023 | Article ID: 5708

## SPECIFICATIONS

Whether you're looking to kick back or go hard, the gaming never needs to end with the all-day comfort of the Razer Enki. By achieving a sweet spot of comfort through optimal weight distribution, it's time to sink into a gaming chair that redefines all-day comfort.



## Device Layout





- a. Wheel base diameter
- b. Seat Width (including slides)
- c. Seat Pan Width (front)
- d. Seat Pan Width (back)
- e. Backrest width (shoulder)
- f. Inter-Armrest Distance (min-max)
- g. Floor-to-Seat Pan Height (min-max)
- h. Seat Pan to Armrest Height (min-max)
- i. Backrest Height from Seat Surface
- j. Armrest Height Adjustment
- k. Seat Depth

## Full Technical Specifications

Category	Specification
Variation	Razer Enki X
Recommended Weight	< 136 kg
Recommended Height	156.5 cm - 194 cm
Size	M
Chair Cover Color	Black/Green, Edward Gaming Edition, Sanrio, Pikachu, Eevee
Chair Cover Material	EPU Synthetic Leather
Base	Steel base
Frame	Steel frame
Armrests	2D armrests
Casters	60 mm PU coated casters
Gas Lift Class	Class 4
Foam Type	High Density PU Molded Foam

Total Recline Angle	152 Degrees
Adjustable Lumbar Cushion	N/A
Adjustable Headrest	N/A
Approximate Size	<ul style="list-style-type: none"><li>• W: 26.40 in / 670 mm</li><li>• H: 49.41 / 1255 mm</li><li>• D: 26.0 in / 660 mm</li></ul>
Approximate Weight	57.32 lbs / 26 kg
Supported Weight	299 lbs / 136 kg
Supported Height	Between 156 cm / 5 ft and 194 cm / 6 ft



## RAZER INSIDER

Have a question? Ask the Razer Community for help! (English only)

[ENTER INSIDER](#)



## NEED HELP?

Get support by phone, chat, or email

[CONTACT SUPPORT](#)