



INSTALLATION INSTRUCTIONS

with Design Guide
Fresh-Food Refrigerator
Bar Refrigerator with Icemaker

Safety Information


BEFORE YOU BEGIN

Read these instructions completely and carefully.

- **IMPORTANT** – Save these instructions for local inspector's use. Observe all governing codes and ordinances.
- **Note to Installer** – Be sure to leave these instructions with the Consumer.
- **Note to Consumer** – Keep these instructions with your Owner's Manual for future reference.

If you received a damaged refrigerator, you should immediately contact your dealer or builder.

Skill Level – Installation of this refrigerator requires basic mechanical, carpentry and plumbing skills. Proper installation is the responsibility of the installer. Product failure due to improper installation is not covered under the GE Appliance Warranty. See the Owner's Manual for warranty information.

⚠ WARNING  **Explosion Hazard.** Keep flammable materials and vapors away from refrigerator. Failure to do so can result in fire, explosion, or death.

⚠ WARNING To reduce the risk associated with choking, do not allow children under 3 years of age to have access to small parts during the installation of this product.

For Monogram local service in your area, call 800.444.1845 or visit monogram.com.

For Monogram service in Canada, call 888.880.3030

For Monogram Parts and Accessories, call 800.444.1845 or visit monogram.com.

For Monogram Parts and Accessories in Canada, call 888.880.3030 or visit monogram.ca.

CONNECTING ELECTRICITY

⚠ WARNING  **Electrical Shock Hazard.**

Plug into a grounded 3-prong outlet.

Do not remove the ground prong.

Do not use an adapter.

Do not use an extension cord.

Failure to follow these instructions can result in death, fire, or electrical shock.

Do not, under any circumstances, cut or remove the third (ground) prong from the power cord.

For personal safety, this appliance must be properly grounded.

The power cord of this appliance is equipped with a 3-prong (grounding) plug which mates with a standard 3-prong (grounding) wall outlet to minimize the possibility of electric shock hazard from this appliance.

Have the wall outlet and circuit checked by a qualified electrician to make sure the outlet is properly grounded.

Where a standard 2-prong wall outlet is encountered, it is your personal responsibility and obligation to have it replaced with a properly grounded 3-prong wall outlet. Do not use an adapter.

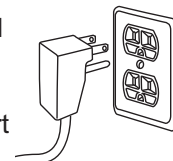
The refrigerator should always be plugged into its own individual electrical outlet which has a voltage rating that matches the rating plate.

A 115 Volt AC, 60 Hz, 15- or 20-amp fused, grounded electrical supply is required. This provides the best performance and also prevents overloading house wiring circuits which could cause a fire hazard from overheated wires.

Never unplug your refrigerator by pulling on the power cord. Always grip plug firmly and pull straight out from the outlet.

Immediately discontinue use of a damaged supply cord. If the supply cord is damaged it must be replaced by a qualified service professional with an authorized service part from the manufacturer.

When moving the refrigerator away from the wall, be careful not to roll over or damage the power cord.



Consignes de Sécurité

⚠ AVERTISSEMENT **Risque d'explosion.**

Conservez les matériaux et vapeurs inflammables de votre réfrigérateur. Le non-respect de cette instruction peut entraîner un risque d'incendie, d'explosion ou de décès.

⚠ AVERTISSEMENT Pour réduire le risque d'étouffement pendant l'installation de ce produit, ne pas laisser les petites pièces à la portée des enfants âgés de moins de 3 ans.

BRANCHEMENTS ÉLECTRIQUES

⚠ AVERTISSEMENT **Risque d'électrocution.**

Branchez l'appareil dans une prise à 3 broches mise à la terre.

N'enlevez pas la broche de mise à la terre.

N'utilisez pas un adaptateur.

N'utilisez pas un cordon de rallonge.

Le non-respect de ces instructions peut entraîner des risques d'incendies, des chocs électriques ou la mort.

Ne coupez pas ou n'enlevez pas, sous aucun prétexte, la troisième broche de mise à la terre du cordon d'alimentation. Pour des raisons de sécurité, cet appareil doit être correctement mis à la terre.

Le cordon d'alimentation de cet appareil est équipé d'une fiche à trois broches (pour une mise à la terre) qui s'adapte à la prise de courant standard à 3 broches (pour une mise à la terre) pour minimiser les risques de chocs électriques par cet appareil.

Faites vérifier la prise murale et le circuit électrique par un électricien qualifié pour s'assurer que le système est correctement mis à la terre.

Dans le cas d'une prise biphasée, l'installateur a la responsabilité et l'obligation de la remplacer par une prise triphasée correctement mise à la terre. N'utilisez pas d'adaptateur.

Le réfrigérateur doit toujours être branché à sa propre prise électrique d'une tension nominale correspondant à celle indiquée sur sa plaque signalétique.

Une alimentation électrique à 115 volts CA, 60 Hz, avec un fusible de 15 ou 20 ampères et une mise à la terre est nécessaire. Ceci permet d'obtenir un meilleur rendement et évite de surcharger les circuits électriques du domicile qui risque d'occasionner un incendie en surchauffant.

Ne débranchez jamais le réfrigérateur en tirant sur le cordon d'alimentation. Prenez toujours fermement la fiche en main et tirez pour la sortir de la prise.

Cessez immédiatement l'utilisation d'un cordon électrique endommagé. Si le cordon électrique est endommagé, son remplacement doit être exécuté par un technicien en réparation qualifié au moyen d'un cordon de rechange autorisé par le fabricant.

Lorsque vous éloignez votre réfrigérateur du mur, faites attention à ne pas le faire rouler sur le cordon d'alimentation afin de ne pas l'endommager.



Installation Instructions

CONTENTS

Important Information	2
Parts Required	4
Tools/Hardware Required	4
Staining Wood Panel Fronts	4
Caring for Your Stainless Steel	4
Product Location	4
Install Water Line	5
Design Guide (ZIFI240, ZIFS240, ZIBI240, ZIBS240)	
The Installation Space.....	6
Dual Product Installations	7
For Stainless Steel Models ZIFS240, ZIBS240	8
Flush Inset and Standard Installation.....	8
Product Clearances.....	8
For Custom Models ZIFI240, ZIBI240.....	9
Standard Installation.....	9
Product Clearances.....	9
Installation Instructions	
Step 1, Remove Packaging and Installation Parts.....	10
Step 2, Reversing the Door.....	10
Step 3, Install Custom 3/4" Door Panel and Handle	13
Step 4, Level	14
Step 5, Connect Water Supply	14
Step 6, Connect Power	15
Step 7, Slide Product into Cutout.....	15
Step 8, Set Temperature Controls	15

ZIFI240 AND ZIBI240 MODELS ONLY

PARTS REQUIRED	PARTS SUPPLIED
• Custom handle	• Handle side trim
• Assembled overlay panel	• Optional black or stainless steel toekick
• Screws	

TOOLS/HARDWARE REQUIRED

- Adjustable wrench
- Carpenter's glue (ZIFI240 and ZIBI240 models only)
- Screwdriver (ZIFI240 and ZIBI240 models only)

WARNING **CUT HAZARD**

Cabinet edges along stamp/cut-out areas may be sharp. Avoid placing hands, fingers, or other appendages near these areas. Failure to do so can result in cuts.

AVERTISSEMENT **Risque de coupure**

Les bords de la caisse et les zones comportant un code d'identification ou des découpes peuvent être tranchants. Garder les mains, les doigts ou autres appendices éloignés de ces zones. Le non-respect de cette instruction peut causer des coupures.

STAINING WOOD PANEL FRONTS

The drawer fronts are unfinished cherry wood. During use, oil from hands may accumulate and stain the wood.

- The drawer fronts may be stained and sealed to match adjacent cabinetry.
- Apply the stain and sealer according to the manufacturer's instructions. To avoid unpleasant odor, keep the door open to ventilate and allow the stain/sealer to dry completely before using the product.

CARING FOR YOUR STAINLESS STEEL

- Before installation or first use, we strongly advise that you polish the stainless steel exterior and handle with a commercially available stainless steel cleaner such as Stainless Steel Magic.™ To preserve and protect the fine finish, we also strongly advise that you apply stainless steel cleaner monthly.

REFRIGERATOR LOCATION

- Do not install the refrigerator/freezer where the temperature will go below 55°F (13°C). It will not run often enough to maintain proper temperatures.
- Do not install the refrigerator/freezer where temperatures will go above 100°F (37°C). It will not perform properly.
- Do not install the refrigerator/freezer in a location exposed to water (rain, etc.) or direct sunlight.
- Install it on a floor strong enough to support it fully loaded.

Installation Instructions

INSTALL WATER LINE (ZIBI240 AND ZIBS240 MODELS ONLY)

⚠ WARNING Connect to potable water supply only.

⚠ AVERTISSEMENT Raccordez l'appareil à une alimentation d'eau potable seulement.

- A cold water supply is required for automatic icemaker operation. The water pressure must be between 20 and 120 p.s.i. (137-827 kPa).
- The water line can enter the opening through the floor or back wall. Route 1/4" O.D. copper tubing or SmartConnect™ kit between the cold water line and water connection location, long enough to extend to the front of the refrigerator.
- Install an optional water filter in the water line near the refrigerator. A water filter is recommended in areas where the water supply contains sand and particles. Installation Instructions are packed with the filter.

NOTE: The only GE approved plastic tubing is supplied in the SmartConnect™ Refrigerator Tubing kits. Do not use any other plastic water supply line because the line is under pressure at all times. Other types of plastic may crack or rupture with age and cause water damage to your home.

SmartConnect™ Refrigerator Tubing Kits are available in the following lengths:

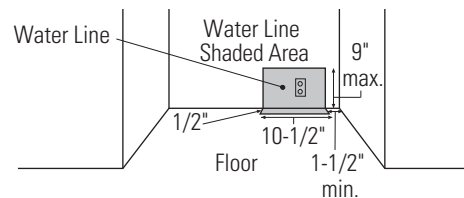
2' (0.6 m)...WX08X10002	5' (4.6 m)...WX08X10015
6' (1.8 m)...WX08X10006	25' (7.6 m)...WX08X10025

Shut off the main water supply.

Turn on the nearest faucet long enough to clear the line of water.

- Install a shut-off valve (required) between the icemaker water valve and cold water pipe in a basement or cabinet. The shut-off valve should be located where it will be easily accessible.
- Turn on the main water supply and flush debris. Run about a quart of water through the tubing into a bucket. Shut off water supply at the shut-off valve.

NOTE: Saddle type shut-off valves are included in many water supply kits, but are not recommended for this application.

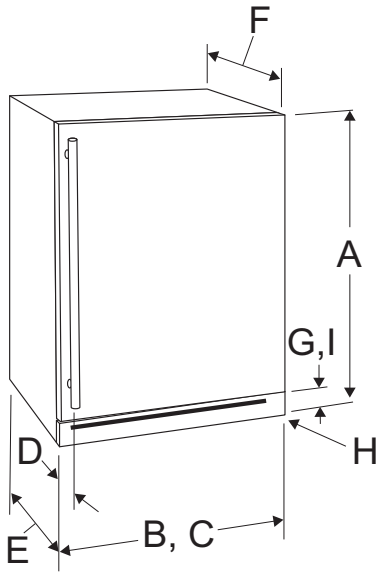


NOTE: Commonwealth of Massachusetts Plumbing Codes 248CMR shall be adhered to. Saddle valves are illegal and use is not permitted in Massachusetts. Consult with your licensed plumber.

Design Guide

For models ZIFI240, ZIFS240, ZIBI240, ZIBS240

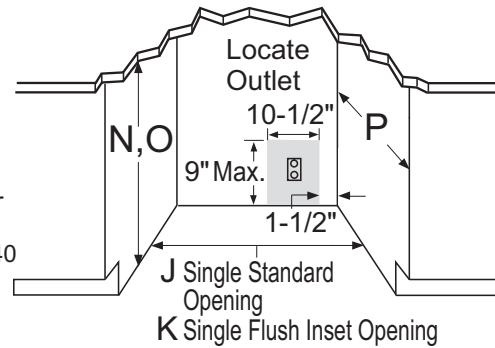
THE INSTALLATION SPACE



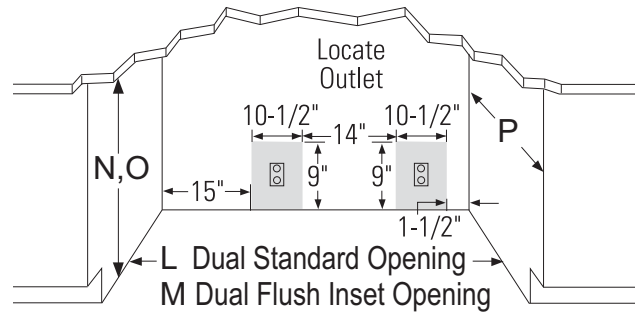
NOTE:
Custom Handles may vary.
Monogram Handle Depths
see D-Handle Depth Range.

SINGLE PRODUCT INSTALLATION

NOTE:
Waterline
location for
ZIBS240
and ZIBI240
ONLY.



SIDE BY SIDE PRODUCT INSTALLATION



	Description	Fresh Food Custom ZIFI240 Dimensions	Fresh Food SS ZIFS240 Dimensions	Bar Custom ZIBI240 Dimensions	Bar SS ZIBS240 Dimensions
A	Height (Level leg down) includes hinge	34 1/8" (867 mm)	34-1/16" (866 mm)	34-1/8" (867 mm)	34-1/16" (866 mm)
B	Width (Including door)	23 5/8" (600 mm)	23-7/16" (596 mm)	23-5/8" (600 mm)	23-7/16" (596 mm)
C	Width without door	23 7/16" (596 mm)	23-7/16" (596 mm)	23-7/16" (596 mm)	23-7/16" (596 mm)
D	Handle Depth Range unless Custom Handle	2 1/8", 2-5/8" (54, 66.7 mm)	2-1/8", 2-5/8" (54, 66.7 mm)	2-1/8", 2-5/8" (54, 66.7 mm)	2-1/8", 2-5/8" (54, 66.7 mm)
E	Depth including Door (& custom panels) without Handle	24-1/2" (622 mm)	23-3/8" (594 mm)	24-1/2" (622 mm)	23-3/8" (594 mm)
F	Depth without door	21 3/4" (552 mm)	21-3/4" (552 mm)	21-3/4" (552 mm)	21-3/4" (552 mm)
G	Toe Kick Height (floor to bottom of door)	4" (102 mm)	4" (102 mm)	4" (102 mm)	4" (102 mm)
H	Level Leg Max Adjustment	1" (25 mm)	1" (25 mm)	1" (25 mm)	1" (25 mm)
I	Decorative Toe Kick Part Dimension	23-7/16" W x 3-1/8" H (596 W x 79 H mm)	23-7/16" W x 3-1/8" H (596 W x 79 H mm)	23-7/16" W x 3-1/8" H (596 W x 79 H mm)	23-7/16" W x 3-1/8" H (596 W x 79 H mm)
J	Single Standard Opening	23 7/8" (606 mm)	23 7/8" (606 mm)	23 7/8" (606 mm)	23 7/8" (606 mm)
K	Single Flush Inset Opening	24 7/8" (632 mm)	24 7/8" (632 mm)	24 7/8" (632 mm)	24 7/8" (632 mm)
L	Dual Standard Opening	47 3/4" (1213 mm)	47 3/4" (1213 mm)	47 3/4" (1213 mm)	47 3/4" (1213 mm)
M	Dual Flush Inset Opening	49 3/4" (1264 mm)	49 3/4" (1264 mm)	49 3/4" (1264 mm)	49 3/4" (1264 mm)
N	Maximum Cabinet Opening Height	35" (889 mm)	35" (889 mm)	35" (889 mm)	35" (889 mm)
O	Minimum Cabinet Opening Height	34.5" (876 mm)	34.5" (876 mm)	34.5" (876 mm)	34.5" (876 mm)
P	Cabinet Opening Depth S: Standard, F: Flush Inset	S: 24" (610 mm), F: 25" (635mm)	S: 24" (610 mm), F: 25" (635mm)	S: 24" (610 mm), F: 25" (635mm)	S: 24" (610 mm), F: 25" (635mm)
Q	Gap between drawers	Not Applicable	Not Applicable	Not Applicable	Not Applicable
R	Depth with door open 90 or drawer fully open	46-13/16" (1189.5 mm)	44-9/16" (1132 mm)	46-13/16" (1189.5 mm)	44-9/16" (1132 mm)
S	Height with top cover (Level leg down)	Not Applicable	Not Applicable	Not Applicable	Not Applicable

Design Guide

For models ZIFI240, ZIFS240, ZIBI240, ZIBS240

THE INSTALLATION SPACE

All models may be used freestanding.

NOTE: If installing between frameless cabinets, a 1/2" wide filler strip or side panel may be needed on the hinge side. The filler strip will act as a spacer between the door case and adjacent cabinet and will prevent interference with the cabinet door swing. The width of the opening must include the filler panels.

Additional Specifications

- A 120 volt 60Hz., 15 or 20 amp power supply is required. An individual properly grounded branch circuit or circuit breaker is recommended. Install a properly grounded 3-prong electrical receptacle recessed into the back wall as shown. Electrical must be located on rear wall as shown.

NOTE: GFCI (ground fault circuit interrupter) is not recommended.

- Products must operate from separate, properly grounded receptacles.

Black or Stainless Steel Toekick Options

- These products are shipped with a stainless steel toekick and a black toekick. For shipping purposes, one of the toe kicks will be secured to the back of the unit, and the second will be installed on the unit. Keep the unused toekick and any unused parts for future use.

SIDE-BY-SIDE INSTALLATIONS

For a complete refreshment center, Install a fresh food refrigerator beside a Double-Drawer refrigerator, Beverage Center, or Wine Chiller/Wine Reserve.

- A side by side installation requires minimum width openings depending on if the product will be flush or standard mounted and if there are stainless or custom panels. See chart below.
- **For a standard installation:** The product must be installed so that the product front will project forward of the adjacent cabinets by the dimensions T or U according to the model in the chart. This position will allow a full door swing and prevent interference with adjacent cabinetry. The opening between cabinets must be a minimum of dimension K.

Panel	Mount Depth Style	Minimum width Opening
Stainless	Flush	M
Stainless	Standard	L
Custom	Standard (only)	L
Custom	Flush	M

NOTE: To minimize interference when products are placed side by side, adjust door swing to put hinges farthest away from each other and handles closest to each other. Please consult model availability to ensure the configuration needed is available.

NOTE: Gap between units for Stainless is 1/4".
Gap between units for Custom Panels is 1/2".

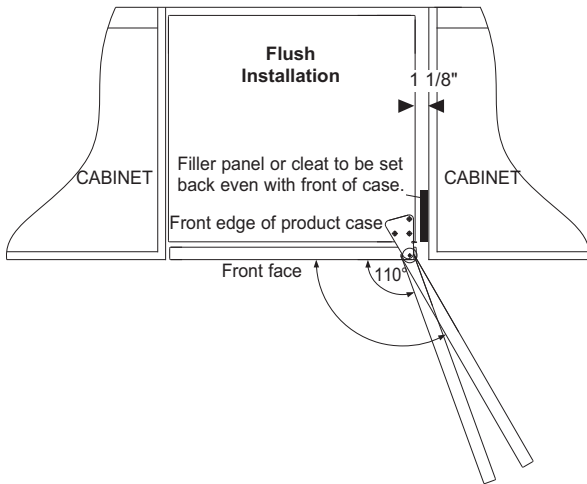
Design Guide

For Models ZIFS240 and ZIBS240 with Stainless Steel Door Panels and Handles for Flush and Standard Installation

THE INSTALLATION SPACE

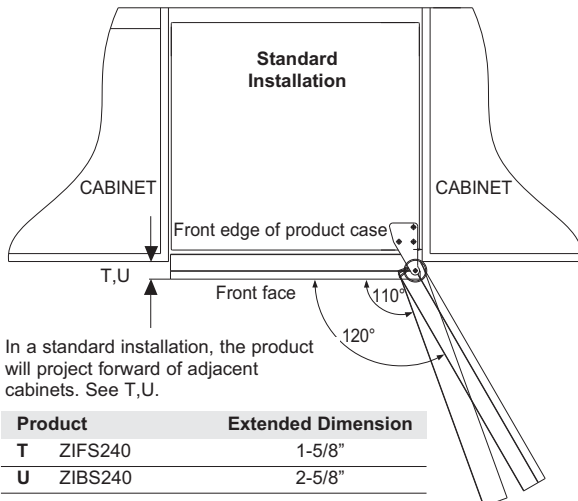
For a flush installation

Install a 1/4"-wide filler strip on the hinge side. The filler strip will act as a spacer between the door case and adjacent cabinets and will prevent interference with the cabinet door swing. Recess the filler strip 1-5/8" back from the front face of the refrigerator, or even with the front edge of the product case (behind the gasket). The width of the opening must be 24 7/8" (including the 1 1/8" filler strip).



For a standard installation

The product must be installed so that the product front will project forward of the adjacent cabinets by the dimensions T or U according to the model in the chart. This position will allow a full door swing and prevent interference with adjacent cabinetry. The opening between cabinets must be a minimum of dimension K.



In a standard installation, the product will project forward of adjacent cabinets. See T,U.

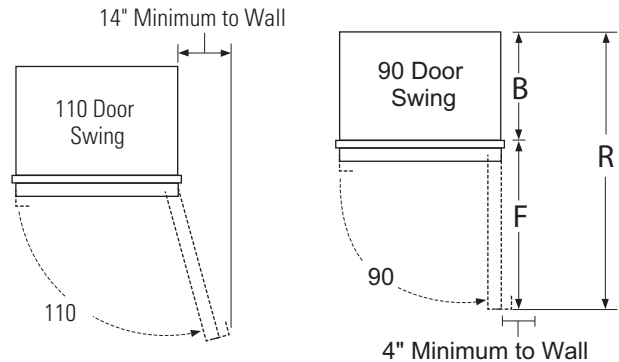
Product	Extended Dimension
T ZIFS240	1-5/8"
U ZIBS240	2-5/8"

PRODUCT CLEARANCES

For Models ZIFI240 and ZIBI240 both are set at 110° door swing from factory with no adjustment or 90° stop.

When installed in a corner:

- Allow 14" minimum clearance on the **hinge side** for a full 110° door swing.
- Allow 4" min. clearance on the **hinge side** for the 90° door swing and to allow racks to slide out.



NOTE: Clearances are based on the recommended 2-1/4" handle standoff depth.

- Test the door swing. Carefully open and close the door. The door should not rub or catch on adjacent cabinetry.

Choose the location:

- These products may be closed in on the top and three sides as long as the front is unobstructed for air circulation and proper access to the door.
- Do not install these products where the temperature will go below 55°F (13°C) or above 100°F (37°C).
- These products are not designed to be stacked one over the other.

Important: Model ZIBS240 is not available with a left hand door swing. DOOR HINGE IS NOT REVERSIBLE.

Right hand models illustrated. Allow the same clearances on the opposite side for left hand fresh food Model ZIFS240.

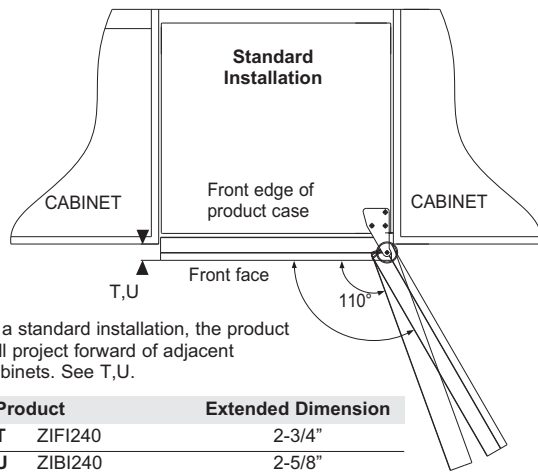
Design Guide

For Models ZIFI240 and ZIBI240 with Custom Door Panels and Handles for Standard Installation only

THE INSTALLATION SPACE

Standard installation

The product must be installed so that the product front will project forward of the adjacent cabinets by the dimensions T or U according to the model in the chart. This position will allow a full door swing and prevent interference with adjacent cabinetry. The opening between cabinets must be a minimum of dimension K.



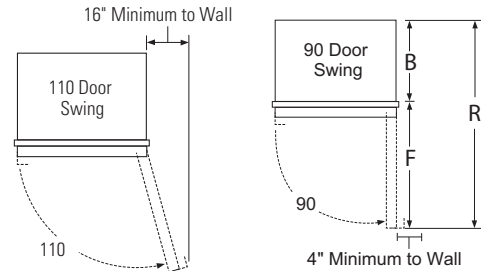
In a standard installation, the product will project forward of adjacent cabinets. See T,U.

PRODUCT CLEARANCES

For Models ZIFI240 and ZIBI240 both are set at 110° door swing from factory with no adjustment or 90° stop.

When installed in a corner:

- Allow 16" minimum clearance on the **hinge side** for a full 110° door swing.
- Allow 4-1/2" min. clearance on the **hinge side** for the 90° door swing and to allow racks to slide out.



NOTE: Custom handle clearances may vary.

NOTE: Right hand models illustrated. Allow the same clearances on the opposite side for left hand fresh food model ZIFI240 only. Model ZIBI240 is not available with left hand door swing.

- Test the door swing. Carefully open and close the door. The door should not rub or catch on adjacent cabinetry.

NOTE: When installing custom panel and handle, use above clearances as a general guide but adjust according to the installation.

Choose the location:

- These products may be closed in on the top and three sides as long as the front is unobstructed for air circulation and proper access to the door.
- Do not install these products where the temperature will go below 55°F (13°C) or above 100°F (37°C).
- These products are not designed to be stacked one over the other.

Important: Model ZIBI240 is not available with a left hand door swing. DOOR HINGE IS NOT REVERSIBLE.

Right hand models illustrated. Allow the same clearances on the opposite side for left hand fresh food Model ZIFI240

Installation Instructions

STEP 1 REMOVE PACKAGING AND INSTALLATION PARTS

- Remove corner blocks and foam drawer stops.
- Remove all packing material, tape and protective plastic coverings.
- Remove the toekick attached to the back of the unit.
- Remove the custom panel attached to the front of the unit.

⚠ WARNING Small objects are a choke hazard for children. Remove and discard any parts not used.

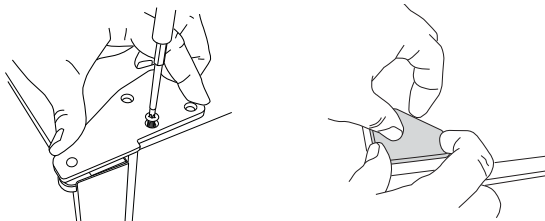
⚠ AVERTISSEMENT Les petits objets peuvent étrangler les enfants. Il faut jeter toutes les pièces qui ne sont pas utilisées.

STEP 2 REVERSING THE DOOR (ZIFI240 model only)

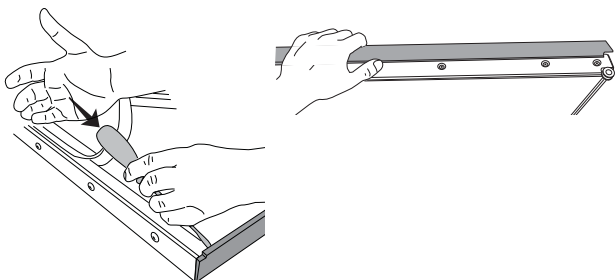
⚠ WARNING Follow all steps when reversing the door swing. Failure to follow these instructions, leaving off parts, or over tightening screws, can lead to the door falling off and result in injury and property damage.

⚠ AVERTISSEMENT Suivez toutes les étapes pour inverser le sens d'ouverture de porte. L'omission de suivre ces instructions, de ne pas utiliser toutes les pièces, ou le serrage excessif des vis, peuvent causer la chute de la porte et occasionner des blessures ou des dommages à la propriété.

- Remove top hinge and discard. Hold the door in place.
- Remove the black screw-hole cover from top left of cabinet and insert in top right.

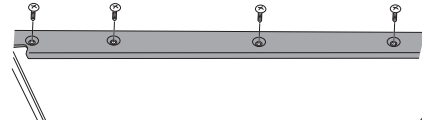


- Remove the top trim cover and discard.

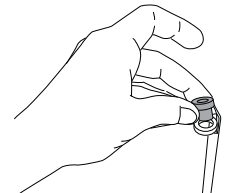


STEP 2 REVERSING THE DOOR (Cont.) (ZIFI240 model only)

- Remove 4 screws to remove the top door trim (do NOT discard).

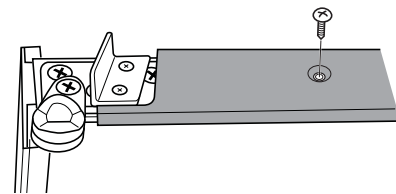


- Remove the top hinge pin (do NOT discard).

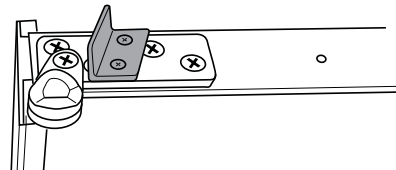


- Flip the door 180 degrees.

- Remove 3 screws to remove the bottom door trim (do NOT discard)



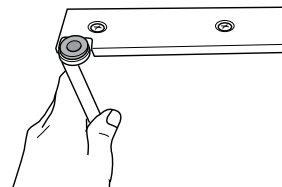
- Remove 2 screws to remove the door stop and discard door stop.



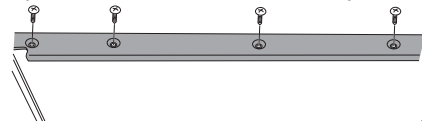
- Remove 1 screw to remove the bottom hinge pin and discard hinge pin.

NOTE: Make sure the door is upside down so what was the bottom is now the top.

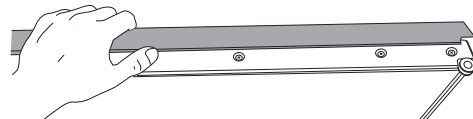
- Insert the top hinge pin.



- Install top door trim onto the new top side of the door.



- Install the new top trim cover that snaps into place.

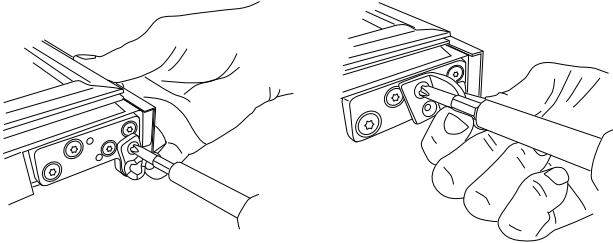


- Flip the door 180 degrees.

Installation Instructions

STEP 2 REVERSING THE DOOR (Cont.) (ZIFI240 model only)

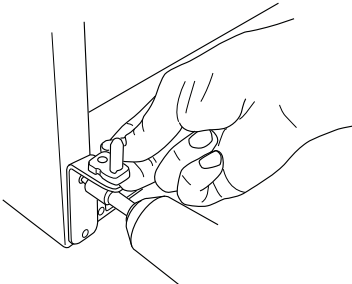
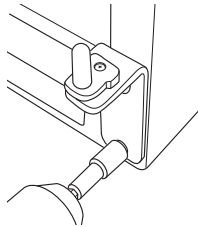
- Install the new left bottom hinge pin and new door stop that are enclosed in the hardware bag.



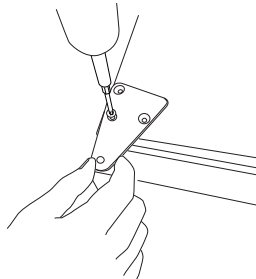
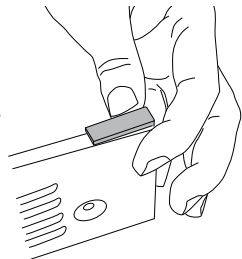
- Install the bottom trim onto the new bottom side of the door.



- Remove 2 screws to remove the toe kick (do NOT discard).
- Remove 4 screws to remove the bottom right hinge (discard the hinge).
- Install bottom left hinge that is enclosed in hardware bag with existing screws.



- Remove the plastic cap from the top left corner of the toe kick and discard.
- Attach the new plastic cap that is enclosed in the hardware bag to the top right corner of the toe kick.
- Reinstall toe kick to unit with 2 existing screws.
- To install the door, set the door onto the left bottom hinge pin. Holding the door in place, insert the new top left hinge pin into the door and secure the hinge to the case with screws.

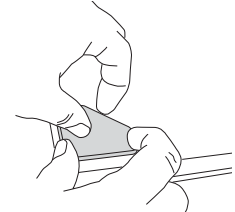
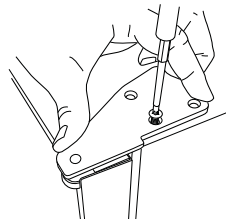


STEP 2 REVERSING THE DOOR (Cont.) (ZIFS240 model only)

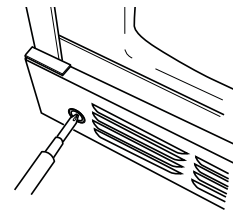
⚠ WARNING Follow all steps when reversing the door swing. Failure to follow these instructions, leaving off parts, or over tightening screws, can lead to the door falling off and result in injury and property damage.

⚠ AVERTISSEMENT Suivez toutes les étapes pour inverser le sens d'ouverture de porte. L'omission de suivre ces instructions, de ne pas utiliser toutes les pièces, ou le serrage excessif des vis, peuvent causer la chute de la porte et occasionner des blessures ou des dommages à la propriété.

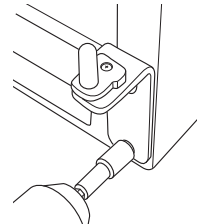
- Remove top hinge and discard. Hold the door in place.
- Remove the black screw-hole cover from top left of cabinet and insert in top right.



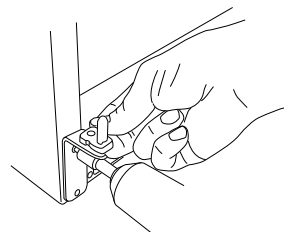
- Remove 2 screws to remove the toe kick (do not discard).



- Remove bottom right hinge and discard the hinge. Keep the screw for installation of the new hinge.



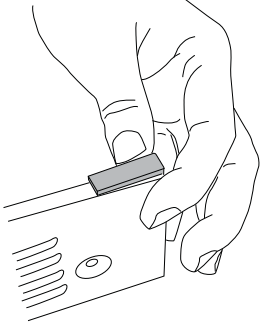
- Attache the bottom left hinge with the screw from the previous step.



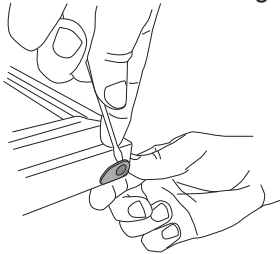
Installation Instructions

STEP 2 REVERSING THE DOOR (Cont.) (ZIFS240 model only)

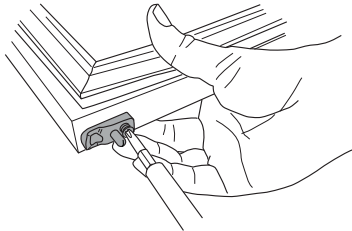
- Move the plug on the toekick from the left to the right and reattach toekick to the unit.



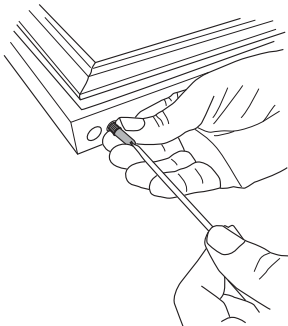
- Remove top plug/bushing from the door using a flat head screwdriver. Discard the bushing.



- Rotate the door 180°.
- Remove the screw from the plug/bushing on the bottom of the door. Discard the plug/bushing but keep the screw.



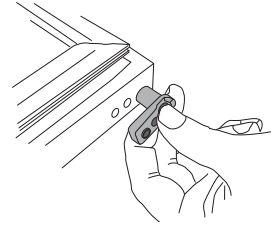
- Remove the black screw post from the bottom of the door using a flat head screwdriver. Keep the screw post.



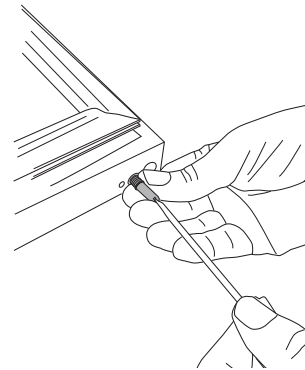
NOTE: The top will now be the bottom of the door and the bottom is now the top.

STEP 2 REVERSING THE DOOR (Cont.) (ZIFS240 model only)

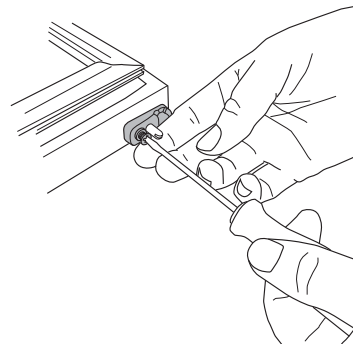
- Insert the new top plug/bushing in the new top of the door.



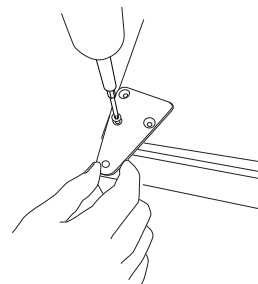
- Rotate the door 180°.
- Re-insert the black screw post in the new bottom of the door.



- Insert the new bottom plug/bushing in the new bottom of the door. Secure with the screw removed from the old plug/bushing.



- To install the door, set the door onto the left bottom hinge pin. Holding the door in place, insert the new top left hinge pin into the door and secure the hinge to the case with screws.



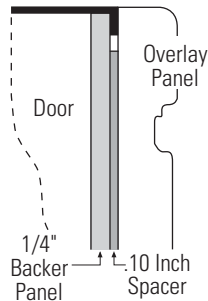
Installation Instructions

STEP 3 INSTALL CUSTOM 3/4" DOOR PANEL AND HANDLE (ZIFI240 and ZIBI240 models only)

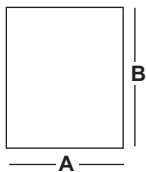
3/4" Overlay Panel Dimensions

Model ZIFI240 and ZIBI240 require a field-installed overlay door panel.

- The overlay panel must be secured to a 1/4" thick backer panel that slides into the trim. A .10" thick spacer panel must be placed between the overlay and backer panel.
- A custom handle of your choice, supplied by your cabinetmaker, must be installed on this overlay panel. Countersink all screws into the backer panel. Screws cannot protrude from the backer panel.



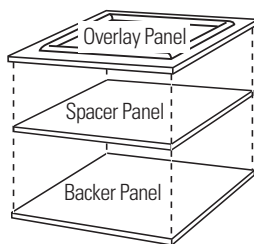
IMPORTANT NOTE: Maximum total weight for custom door panel is 25 pounds.



3/4" Overlay Panel Dimensions (in inches)			
	A (Width)	B (Height)	
1/4" Backer	23-3/16"	29-9/16"	
0.10" Spacer	22-1/2"	29-1/16"	
3/4" Overlay	23-5/8"	30"	

Assemble overlay panels with glue and screws.

- Center spacer panel on the backer panel, left to right and top to bottom. Secure the panels with glue.
- Center the spacer/backer panel on the overlay panel. Secure with glue and screws. Countersink all screws into the backer panel.

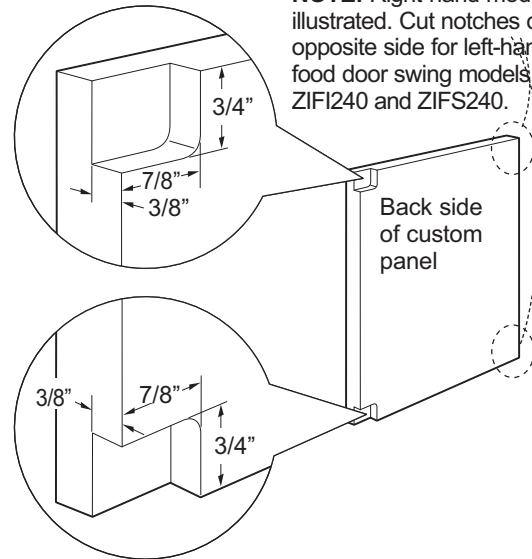


STEP 3 INSTALL CUSTOM 3/4" DOOR PANEL AND HANDLE (ZIFI240 and ZIBI240 models only)

Custom Panel Hinge Routing Dimensions

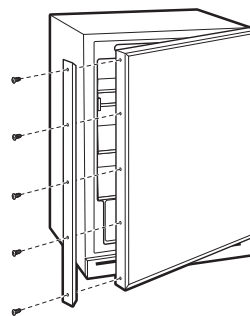
Use a 3/4" router bit to cut a notch into the back side of the assembled panel 3/8" toward the front of the overlay panel, 3/4" deep and 7/8" wide.

NOTE: Right-hand models illustrated. Cut notches on the opposite side for left-hand fresh food door swing models ZIFI240 and ZIFS240.



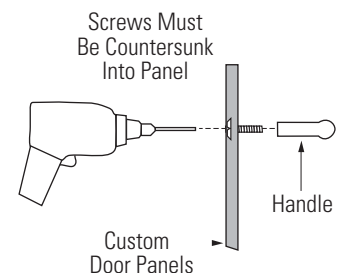
Install custom door panel and handle:

- Open door to 90°.
- Remove 5 screws holding trim; lift off trim. Retain screws.



NOTE: Right-hand models illustrated. Follow the same instructions on the opposite side for left-hand fresh food door swing models ZIFI240 and ZIFS240.

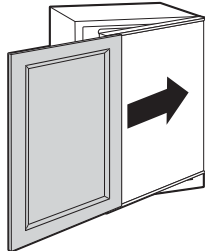
- A custom handle of your choice, supplied by your cabinetmaker, must be installed onto the overlay panel before the panels are slid into the trim. Countersink all screws into the backer panel. Screws cannot protrude from the backer panel.



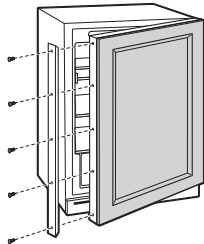
Installation Instructions

STEP 3 INSTALL CUSTOM 3/4" DOOR PANEL AND HANDLE (ZIFI240 and ZIBI240 models only)

- Slide overlay panel into the door trim.



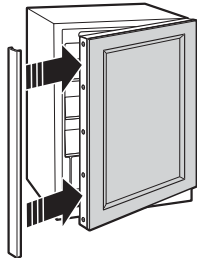
- Reinstall the side trim using the trim screws removed earlier.



- Place the brushed decorative cover over the side trim to hide the screw heads. Ensure side trim is aligned top to bottom and front to back. Snap into place.

NOTE:

For shipping purposes, the brushed decorative cover will be secured to the front of the unit.

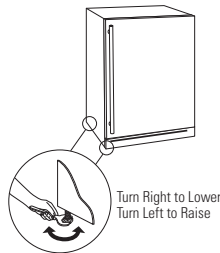


STEP 4 LEVEL

- Use an adjustable wrench to turn the leveling legs and raise or lower the product. For built-in installation, adjust the leveling legs slightly below the bottom of the countertop.

INSTALLATION TIP:

Measure floor to underside of countertop inside the opening. If the room floor is higher than the opening floor, adjust the rear leveling legs approximately 1/8" less than the opening height. Screw front legs all the way in to shorten the height at the front. This will allow you to slightly tip the unit into the opening. Once in the correct position, the front legs can be adjusted to level the product.



Turn Right to Lower
Turn Left to Raise

STEP 5 CONNECT WATER SUPPLY (ZIBI240 and ZIBS240 models only)

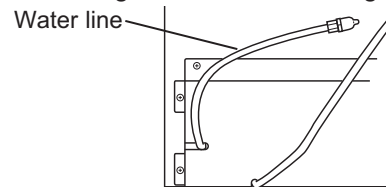
⚠ WARNING Connect to potable water supply only.

⚠ AVERTISSEMENT Raccordez l'appareil à une alimentation d'eau potable seulement.

⚠ WARNING **Electrical Shock Hazard**
Attach tubing clamp using existing hole only. **DO NOT** drill into the refrigerator.

⚠ AVERTISSEMENT **RISQUE DE DÉCHARGE ÉLECTRIQUE**
Fixez le collier de serrage dans le trou présent seulement. **NE PERCEZ PAS** dans le réfrigérateur.

- Locate and bring the water line tubing to the rear of



the cabinet.

- Turn the water on to flush debris from the line. Run about a quart of water through the tubing into a bucket, then shut off the water.

Copper Tubing:

- Slip a 1/4" nut and ferrule over both ends of the copper tubing. Insert the tube into the refrigerator connection on the unit and tighten the nut.
- Turn on the water to check for leaks.

GE SmartConnect™ Tubing: Follow the instructions provided with the tubing. Over tightening may cause leaks. Turn on the water to check for leaks.

NOTE: Coil excess tubing behind the unit.

Installation Instructions

STEP 6 CONNECT POWER

- Connect power cord plug to a properly grounded receptacle.
 - Check to make sure power is on by opening the door to see if interior light turns on.
 - Bar Refrigerator with Icemaker – The interior fan runs all the time except during defrost cycle when the door is open.
 - Fresh-Food Refrigerator – The interior fan runs all the time except when the door is open.
- See the Owner's Manual for further explanation of the fan.

STEP 8 SET TEMPERATURE CONTROLS

- The temperature controls are preset. Refer to the Owner's Manual for more information. Allow 12–24 hours for the temperature to stabilize.
- NOTE:** The Fresh-Food Refrigerator or Bar Refrigerator with Icemaker operate very quietly. You may not notice the unit running, and when first installed, the fans and motor may not come on immediately – this is normal. If the display is lit and the light is working, the unit is operating.

STEP 7 SLIDE PRODUCT INTO THE CUTOUT

NOTICE: Do not push against the door panel with your knees. Do not push or lift the unit by the door handle. Damage may occur.

- Open the door and gently push the unit back into the opening with your hands against the sides. Be careful not to entangle power cord.
- In a standard 24" opening, the front face of the stainless steel door will be flush with adjacent cabinetry. A custom panel door may protrude 1-3/4" beyond the surrounding cabinets.
- Check again to be sure the unit is level.
- If the unit is installed under a countertop, adjust the leveling legs until the unit is resting firmly against the underside of the countertop.
- If alignment with adjacent cabinetry is an issue, use a shim to secure the unit against the underside of the countertop.

NOTE: While performing installations described in this book, safety glasses or goggles should be worn.

NOTE: Product improvement is a continuing endeavor at Monogram. Therefore, materials, appearance and specifications are subject to change without notice.

