



# Premium Laminate Floor Underlayment

## MOISTURE BARRIER

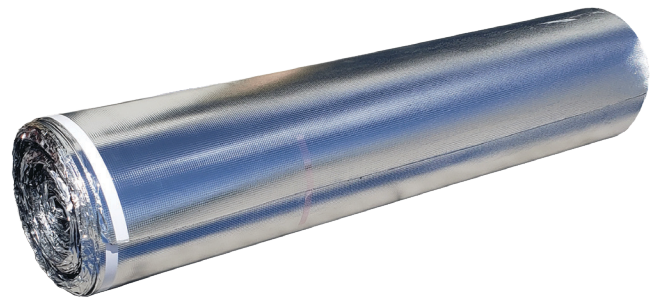


### UL-MB3

#### Sound Dampening Noise Guard and Moisture Barrier

IIC Rating	73
STC Rating	72
Water Resistance	Water Resistant/Closed Cell
Thickness	3 mm EVA Padding
Roll Weight	18.0 lbs (+/- 3%)
Sq. ft. Per Roll	200 sq. ft.
Warranty	Lifetime Warranty
Dimensions	55.6 ft. Length x 3.7 ft. Wide
<b>Includes overlap and tape for easy installation.</b>	

Installation instructions on reverse side.



For best results when installing your floating floor, we recommend LionsFloor Premium Underlayment.

Our underlayment offers exceptional sound dampening properties, acts as a reliable moisture barrier, and effectively impedes the growth of mold and mildew.



# Premium Laminate Floor Underlayment **INSTALLATION GUIDE**

## **PLEASE READ COMPLETELY BEFORE INSTALLATION**

Protection from moisture has never been easier. Use this thin, durable, and affordable vapor barrier! Use the Lions Floor Moisture barrier for floating flooring installations over concrete or any subfloor with potential moisture issues.

Lions Floor UL-MB3 Sound Dampening Noise Guard and Moisture Barrier can be used with laminate products with pre-attached underlayment pad. Follow these easy instructions to get your vapor barrier installed correctly!

## **Gather Your Tools:**

Good organization will help to start your project smoothly. Gather all your supplies for both the underlayment and flooring installation.

- Lions Floor Moisture Barrier Underlayment
- Waterproof Tape
- Scissors or Utility Knife
- Broom or Shop Vac

## **Begin the Installation:**

### **Step 1: Properly Prepare your Subfloor**

Before you start installing the vapor barrier, properly prepare your subfloor. Following flooring installation requirements for the flooring product you will be installing. Your area should be completely free of dust and debris.

### **Step 2: Lay the Rows of Underlayment**

Roll the moisture barrier out perpendicular to the direction you are installing your floor. You will want to overlap the vapor barrier 4" to 6" and use attached edge tape on product to bond seams. All cross seams and fill pieces that have no edge tape, overlap, and use waterproof tape to bond seams. You can let the moisture barrier run up the wall slightly where it will be covered by the baseboard or quarter round after flooring installation is complete. Continue laying rows until the entire flooring installation area is completely covered and all seams overlapped and taped.