



OWNER'S MANUAL

# Portable Bluetooth Speaker

---

Please read this manual carefully before operating your set and retain it for future reference.

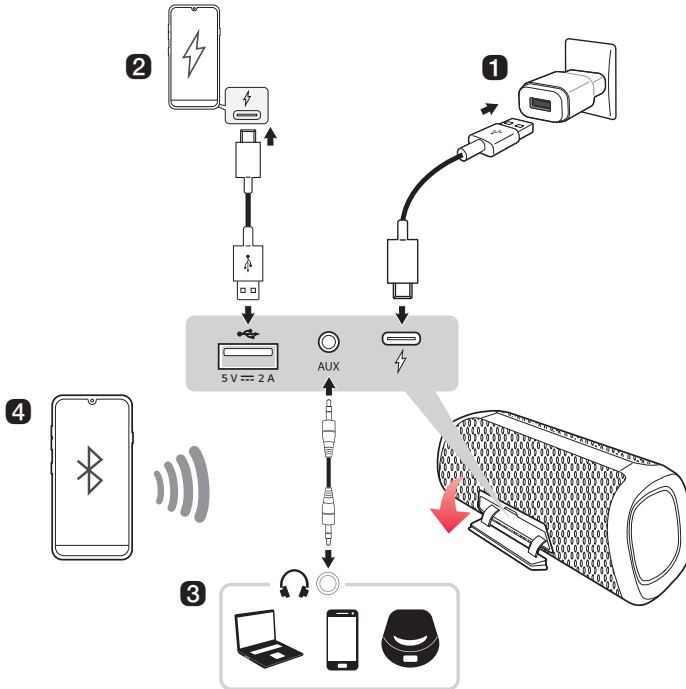
MODEL

XG7QBK

XG7QGR

# Portable Bluetooth Speaker Quick Guide

## Connecting and Using the Speaker



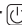


---

**1** Charge the speaker before using it by opening the rear cover and connect the speaker to an AC adapter (not supplied).

---

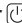
## 2 Charging a smartphone (→ See “Charging a smartphone” on page 24.)

---

- 1 Press the **Power**  button on the speaker to turn it on.
- ! You can only charge your smartphone in **Bluetooth** mode.
- 2 Open the back cover of the speaker and connect the smartphone to the  (5 V  2 A) terminal via the USB cable. The smartphone starts to be charged.

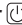




## 3 Connecting to an External Device (→ See “Connecting via 3.5 mm Stereo Cable” on page 22.)

---

- 1 Press the **Power**  button on the speaker to turn it on.
- 2 Open the back cover of the speaker and connect the external device to the **AUX** terminal via a 3.5 mm stereo cable.
- 3 Turn the external device on and start playing.

## 4 Connect the speaker to a smartphone via Bluetooth (→ See “Connecting Smartphone to the Speaker via Bluetooth” on page 10.)

---

- 1 Press the **Power**  button on the speaker to turn it on. **Bluetooth** LED blinks.
- 2 Press the **Settings**  button on the smartphone and select  **Bluetooth**. Turn on the **Bluetooth** function. (Off  > On )
- 3 Find "LG-XG7Q (XX)" on the device list on the smartphone and connect to it. Once the smartphone is connected via **Bluetooth**, the **Bluetooth** LED will turn on.
- 4 On the smartphone, play a music of your choice.

## 5 Connecting the LG XBOOM App (→ See “Installing app”, “Using the Wireless Party Link” on page 16, 18.)

---

- 1 Find the **LG XBOOM app** on the Google Play or App Store and install it on your smartphone.
- 2 Run the **LG XBOOM app** and use more features. (EQ, Wireless Party Link, Lighting, Sleep Timer, Setting etc.)

# Table of Contents

## Portable Bluetooth Speaker Quick Guide

- 2 Connecting and Using the Speaker

## Exploring the Product

- 5 Top
- 7 Back

## Charge

- 8 Charging the Battery
- 9 Checking Battery Status

## Connecting to Bluetooth

- 10 Connecting Smartphone to the Speaker via Bluetooth
- 13 Connecting Two Bluetooth Devices to the Speaker
- 14 Talking on the Phone Hands-free
- 15 Using Voice command

## Connecting to the LG XBOOM App

- 16 Installing app
- 18 Using the Wireless Party Link

## Connecting to an External Device

- 22 Connecting via 3.5 mm Stereo Cable

## Additional Functions

- 23 Setting Sound Effects
- 24 Charging a smartphone
- 26 Resetting the Speaker
- 26 Resetting Bluetooth
- 27 Using Auto Power Management
- 28 Using Auto power - on.
- 28 Voice feedback function

## Safety Precautions

- 29 Safety and Regulatory

## Before Reporting Product Malfunction

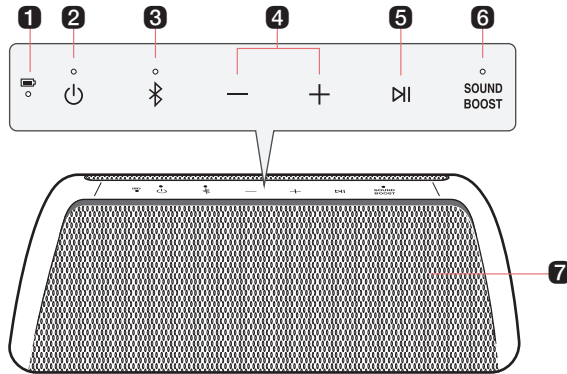
- 32 Troubleshooting

## Appendix

- 33 Specifications
- 34 Registered Trademarks and Licenses
- 35 Handling the Product

# Exploring the Product

## Top



### 1 Battery LED

Please check the battery charging level and battery status. (→ See “Checking Battery Status” on page 9.)

- Press and hold the **Power** (⏻) button for 2 seconds to check the battery level while the power or the speaker is on.

### 2 Power (⏻)

Turns the speaker on or off.

#### Power LED

Indicates the power status.

### 3 Bluetooth (📶)

You can change the **Bluetooth** settings.

- Connecting an additional smartphone: Press and hold the button for 2 seconds. (→ See “Connecting Two Bluetooth Devices to the Speaker” on page 13.)
- Changing from AUX to **Bluetooth**: Press the button.
- Resetting **Bluetooth**: Press and hold the button for 7 seconds. (→ See “Resetting Bluetooth” on page 26.)

#### Bluetooth LED

Indicates the **Bluetooth** connection status.

- 📶 : Blinks in white / Ready for **Bluetooth** device connection.
- 📶 : Turns on in white / Connected to a **Bluetooth** device.

### 4 Volume (⊖ ⊕)

This adjusts the speaker volume.

---

## 5 Play/Pause

In AUX function, press the button to mute.

While **Bluetooth** is connected, press the button to operate the **Bluetooth** device.

- Play/Pause: Press the button.
- Moving to the next music: Press the button twice quickly.
- Moving to the previous music: Press the button three times quickly.
- Using the Hands-Free function: Press the button in **Bluetooth** function when you receive a call from a device connected via **Bluetooth**. (→ See “Talking on the Phone Hands-free” on page 14)
- Using the Voice command: Press and hold the button for 2 seconds. (→ See “Using Voice command” on page 15)

---

## 6 SOUND BOOST

Changes sound effect. (→ See “Setting Sound Effects” on page 23)

### SOUND BOOST LED

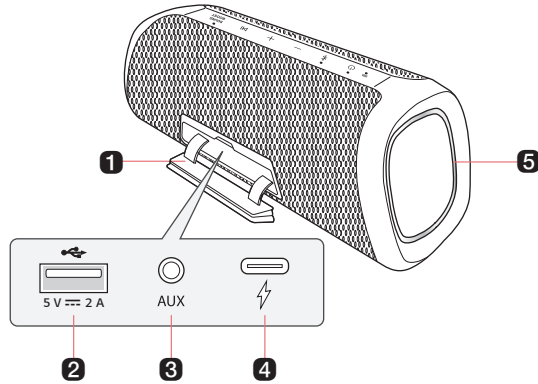
You can check the selected sound effect.

---

## 7 Microphone

You can use the voice command and Hands-Free function while the speaker is connected to **Bluetooth**.

---



## 1 Back Cover

Make sure to fully close the back cover after use.

- Ingress Protection: IP67
  - Solid: The unit is dust-tight.
  - Liquid: Protection against being immersed in 1 meter of water.

## 2 (DC OUT 5 V 2 A)

You can charge a smartphone.

## 3 AUX

You can connect the product to a portable external device with a 3.5 mm stereo cable and start enjoying music.

## 4 (DC IN)

Plug in a USB (C-Type) cable to charge the speaker battery.

## 5 Side Lighting LED

You can change the effect of Side Lighting and turn it on or off in the **LG XBOOM app**.

## CAUTION

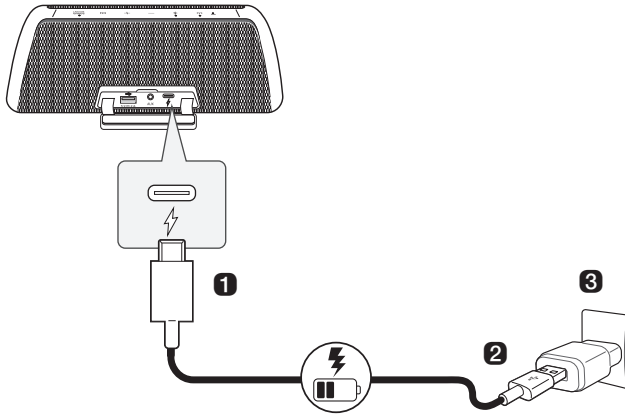
Be careful not to drop the speaker. Mechanical shock may cause deterioration of water-resistant and dust-resistant performance.

# Charge

## | Charging the Battery

The speaker is a built-in battery. Make sure to charge the battery sufficiently before use.

- 1 Open the back cover and connect the USB cable to (⚡) (DC IN) port of the speaker.
- 2 Connect the supplied USB cable to the AC adapter (not supplied).
- 3 Plug the AC adapter into an AC outlet.



### ✔ Note

- It takes about 5 hours to fully charge the speaker. The charging time may differ depending on the battery status or the speaker operation status.
- Once the battery is fully charged, you can use the speaker for about 24 hours.
  - Operation time may vary depending on the battery or operation status.

### ⚠ CAUTION



AC adapter is not supplied. It is recommended that you use the 5 V AC adapter approved by LG Electronics Inc. (more than 2 A) with this speaker because of danger of explosion. If you do not use the recommended adapter, charging is unavailable or charging time may differ.



# Checking Battery Status

## Charging Status

Once the battery charging starts, the battery LED indicates the charging status.




LED	LED Status / Battery Status
	It is green. / Charging is complete.
	It is red. / Charging is in progress.

### ✔ Note

- Playing tracks while charging may lengthen the charging time.
- When the speaker's battery is fully charged with the power off, the battery LED lights up green for 15 seconds and then off.

## Use Status

When you turn on the speaker or press and hold the **Power** (⏻) button for 2 seconds, the battery LED is turned on for 3 seconds according to the battery status.

LED	LED Status / Battery Status
	Turns on in green. / The battery level is above 70 %.
	Turns on in amber. / The battery level is between 10-70 %.
	It blinks red continuously and you can hear a notification sound once. / The battery level is below 10 %, and the battery needs to be charged.

### ✔ Note

- The battery status cannot be checked while charging.

# Connecting to Bluetooth

## Connecting Smartphone to the Speaker via Bluetooth

You can play tracks or run a music app on a **Bluetooth** device and enjoy the sounds through the speaker.

**Please check the following first.**

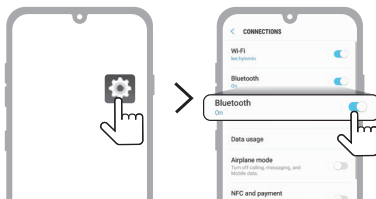
- The speaker's **Bluetooth** specifications are as follows:
  - **Bluetooth** version: 5.1
  - **Bluetooth** codec: SBC, AAC
- This product supports **Bluetooth** devices such as smartphones and laptops. How to connect the devices to the speaker may differ depending on device types and models. For information on how to connect the device, refer to the user manual of the external device to be connected.

Select the [**Bluetooth**] menu on the smartphone's **Settings** screen. The menu access method may differ depending on the smartphone manufacturer and model.

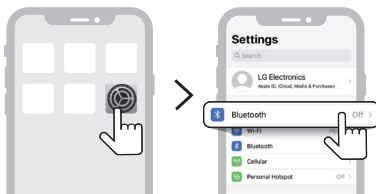
**1** Press the **Power** (⏻) button on the speaker to turn it on. **Bluetooth** LED blinks.



2 Tap the **Setting** (🔧) / (⚙️) button on your smartphone and select **Bluetooth**.



(Android Phone)



(iPhone)


3 Turn on the **Bluetooth** function. (Off  > On )

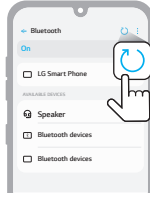
4 You will see a list of connectable devices on the smartphone screen. Find and tap "LG-XG7Q (XX)".



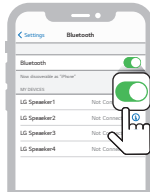
5 Once the speaker and the smartphone are connected via **Bluetooth**, **Bluetooth** LED will turn on with the sound.



- 6 If "LG-XG7Q (XX)" does not appear on the list, tap on the **Refresh**  icon on an Android phone or restart **Bluetooth** on an iPhone.



(Android Phone)



(iPhone)

- 7 Select and play a track on the smartphone.




✔ **Note**

- XX are the last two digits of the **Bluetooth** address. An example would be "LG-XG7Q (08)".
- The closer the **Bluetooth** device is to the speaker, the better connection you will get.
- If no **Bluetooth** device is connected to the speaker, the **Bluetooth** LED blink. Connect the device again.
- Adjust the volume of the **Bluetooth** device to an appropriate level when using it.
- When the product is charging, if you try to connect to the product via the **Bluetooth** device with a connection history, the product will automatically turn on and connect to the **Bluetooth** device. You can control this function in the **LG XBOOM app**. (→ See "Using Auto power - on." on page 28.)

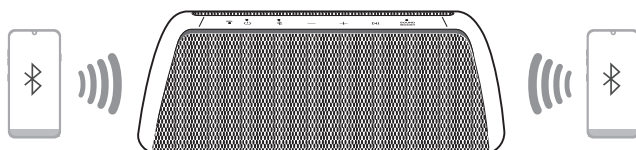
# Connecting Two Bluetooth Devices to the Speaker

## Multi phone pairing

- 1 Connect one **Bluetooth** device to the speaker first.(→ See "Connecting Smartphone to the Speaker via Bluetooth" on page 10.)
- 2 When the **Bluetooth** device and speaker are connected, press and hold **Bluetooth**  button for 2 seconds. Then **Bluetooth** LED blinks with the sound. The speaker is changed to multi phone pairing mode.



- 3 Connect a different **Bluetooth** device to the speaker within 1 minute. (→ See "Connecting Smartphone to the Speaker via Bluetooth" on page 10.)



- 4 Once both the **Bluetooth** devices are connected to the speaker, the **Bluetooth** LED turns on.







### ✓ Note

- Up to two **Bluetooth** devices can be connected to the speaker at the same time.
- When two **Bluetooth** devices are connected at the same time, the speaker channels the sounds of only one of them. You need to stop the playback on the first device to play the sounds of the other one.
- If you turn the speaker off and back on while two **Bluetooth** devices are connected, only the device connected later is automatically connected.


# Talking on the Phone Hands-free

- 1 Connect a smart device to the speaker. (→ See “Connecting Smartphone to the Speaker via Bluetooth” on page 10.)
- 2 You can use the Hands-Free function by operating as in the table below.



Function	How to Use
Receiving phone call	Press the <b>Play/Pause</b>  button.
Ending phone call	Press and hold the <b>Play/Pause</b>  button for 2 seconds.
Declining incoming call	Press and hold the <b>Play/Pause</b>  button for 2 seconds.
Muting voice while taking on the phone	Press the <b>Play/Pause</b>  button.

## ✓ Note

- While this function is being used, the voice command function is disabled.
- If both of the smartphones connected via Multi phone pairing are simultaneously used for phone call, the hands-free function may not work properly.
- **SOUND BOOST** LED blinks during a phone call indicates that voice is muted. Press the **Play/Pause**  button to cancel muting.

## Using Voice command

You can turn on the Google Assistant or Siri function on your smartphone and use voice command through the speaker's microphone.

### Please check the following first.

- Use a smart device that provides a voice command function.
- This function may not work depending on the **Bluetooth** device.

**1** Connect the smartphone to the speaker via **Bluetooth**. (→ See "Connecting Smartphone to the Speaker via Bluetooth" on page 10.)

**2** Press and hold the **Play/Pause**  button for 2 seconds.



**3** Say a desired voice command for Google Assistant or Siri close to the speaker's microphone.



### ✓ Note

- While the hands-free function is being used, this function is disabled.
- If the voice command time limit is exceeded on the smartphone, the function is disabled automatically.
- Android devices may not support this function in some countries according to Google policies.
- If voice command does not work, check the smartphone.

# Connecting to the LG XBOOM App

## Installing app

Use the various functions of the speaker on the **LG XBOOM app**.

To install the **LG XBOOM app**, scan the QR code with an app or install **LG XBOOM** on the Google Play or App Store.

### Please check the following first.

- The **LG XBOOM app** is available in the versions listed below.
  - Android OS: Version 5.0 or higher
  - iOS OS: Version 10 or higher
  - Minimum supported versions for each OS may change later.

## Downloading with a QR code

---

- 1 Scan the QR code with a QR code scan app.
- 2 You will be directed to the page where you can download the **LG XBOOM app**. Tap the app to install it.



(Android Phone OS)



(iPhone OS)

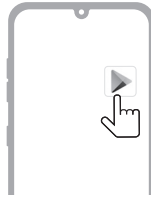
---



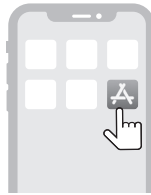
# Downloading in Google Play or App Store

---

**1** Find the **LG XBOOM app** on the Google Play or App Store and install it on your smartphone.



(Android™ Phone)



(iPhone)

- 
- 2** Connect the smartphone to the speaker via **Bluetooth**. (→ See “Connecting Smartphone to the Speaker via Bluetooth” on page 10.)
  - 3** Open the **LG XBOOM app** installed on the smartphone.
  - 4** Follow the instructions on the **LG XBOOM app**. Agree to the Terms of Service, notice windows, access settings, etc.
  - 5** Start using the various functions on the **LG XBOOM app**.

---

**✓ Note**

- The menu access method may differ depending on the smartphone manufacturer and OS.
  - Google, Android and Google Play are trademarks of Google LLC.
-

# Using the Wireless Party Link

You can connect multiple speakers in the **LG XBOOM app**'s Wireless Party Link. There are two ways for using the Wireless Party Link: Dual mode and Multi mode.

## Dual mode

---

Wireless Party Link Dual mode lets you enjoy stereo sound with the same two speakers.

**Please check the following first.**

- The same two speakers are needed. (E.g. XG7Q and XG7Q)

- 1 Connect the speaker and a smartphone first. (→ See "Connecting Smartphone to the Speaker via Bluetooth" on page 10.)
- 2 Tap the Wireless Party Link in the **LG XBOOM app**.
- 3 Tap the Dual mode and connect another speaker following the instructions.
- 4 You can see the Dual mode LED on the speakers.
  - Main speaker: **Bluetooth** LED turns on and output Left channel sound.
  - Other speaker: **Bluetooth** LED turns off and output Right channel sound.




(Main speaker)



(Other speaker)

---

## Connecting to your TV via Dual mode

- 1 Follow the aforementioned instructions to connect two speakers via Dual mode. (→ See “Dual mode” on page 18.)
- 2 Press and hold the **Bluetooth**  button on the main speaker for 2 seconds. Then **Bluetooth** LED will blink for 60 seconds.
- 3 In the TV settings, find and select the main speaker within 60 seconds. You can listen to the TV sound through two speakers.

### ✓ Note

- When using in dual mode with a TV, you cannot control the speakers with the **LG XBOOM app**.

## Multi mode

Wireless Party Link Multi mode lets you enjoy more powerful sound with multiple speakers.

### Please check the following first.

- You can connect multiple LG Bluetooth speakers. (XG9Q/XG7Q/XG5Q and X03Q)

- 1 Connect the speaker and a smartphone first. (→ See “Connecting Smartphone to the Speaker via Bluetooth” on page 10.)
- 2 Tap the Wireless Party Link in the **LG XBOOM app**.
- 3 Tap the Multi mode and toggle the function on.
- 4 Search for nearby speakers and select the speakers you want to connect to.
- 5 You can see the Multi mode LED on the speakers.
  - Main speaker: **Bluetooth** LED turns on and the speaker outputs sound.
  - Other speakers: **Bluetooth** LED turns off and speakers output sound in sync with the main speaker.



(Main speaker)



(Other speaker)

---

✔ **Note**

- The Main speaker connects only one **Bluetooth** device.
  - When using Dual/Multi mode to connect multiple speakers, the multi phone pairing connection is not supported.
  - When you turn the speakers off and on again, the speakers do not automatically reconnect.
  - You can only use the Main speaker for calls or voice commands.
  - If you connect a 3.5 mm stereo cable in Dual/Multi mode, Dual/Multi mode is canceled and then change to AUX function.
  - When you connect multiple speakers in Dual/Multi mode in AUX function, it will change to **Bluetooth** function.
  - To change the connected **Bluetooth** device in Dual/Multi mode, press and hold the **Bluetooth** (Ⓜ) button for 2 seconds. When you hear a beep sound and the **Bluetooth** LED blinks, connect to the desired **Bluetooth** device.
  - Keep the distance between the speakers as close as possible each other.
  - Depending on the network environment, this function may not work well.
  - The screen of a device such as a TV and the sound from the speaker may not match.
  - When multiple speakers are connected in Multi mode, volume and EQ linkage between the Main speaker and Other speakers is not available.
  - When connecting Dual/Multi mode, to express various colours, the party mode's colour does not change to the same as the connected device.
-

# Interworking multiple speakers

This speaker interworks with other LG **Bluetooth** speakers such as XG9Q/XG7Q/XG5Q and X03Q.

<b>Dual mode</b>	<b>Same model (e.g. XG7Q/XG7Q) Main/Other</b>
Volume	0
EQ	0
Lighting	0
Auto Power Management	0
Sleep Timer	0

<b>Multi mode</b>	<b>Same series (XG9Q/XG7Q/XG5Q) Main/Other</b>
Lighting	0
Auto Power Management	0
Sleep Timer	0

<b>Multi mode</b>	<b>Other series (XG9Q/XG7Q/XG5Q/X03Q) Main/Other</b>
Lighting	X
Auto Power Management	X
Sleep Timer	0

# Connecting to an External Device

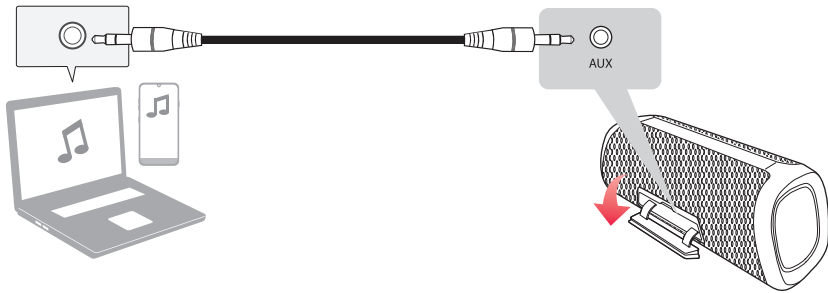
## Connecting via 3.5 mm Stereo Cable

You can connect the speaker and various external devices via a 3.5 mm stereo cable to enjoy the music.

- 1 Press the **Power** (⏻) button on the speaker to turn it on.



- 2 Open the back cover of the speaker and connect the external device to the **AUX** terminal via a 3.5 mm stereo cable.



- 3 Turn the external device on and start playing.


Function	How to Use
Changing AUX to <b>Bluetooth</b>	Press the <b>Bluetooth</b> (📶) button.
Mute	Press the <b>Play/Pause</b> (⏮️) button.

### ✔ Note

- Prepare a 3.5 mm stereo cable. If you do not have a 3.5 mm stereo cable, you can purchase one separately.

# Additional Functions

## | Setting Sound Effects

You can select a desired sound effect by using **SOUND BOOST**  button.



LED (○ Off / ● On)	Function / Description
<input type="radio"/> <b>SOUND BOOST</b>	Standard / You can enjoy High-fidelity sound with balanced and natural.
<input checked="" type="radio"/> <b>SOUND BOOST</b>	SOUND BOOST / You can enjoy the wide sound field and powerful sound.

### ✔ Note



- Because fine-tune sound to provide optimal high-quality sound, It might be a little difference between sound effect modes.

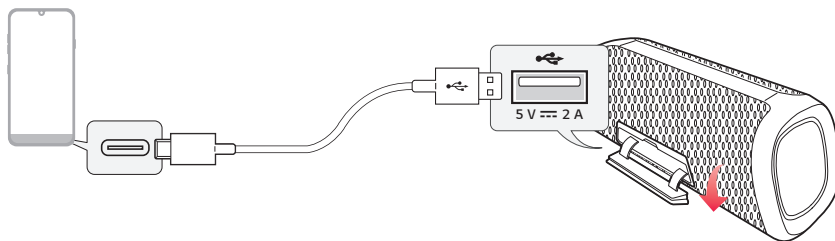
# Charging a smartphone

Use the USB cable to charge your smartphone like a spare battery for the speaker.

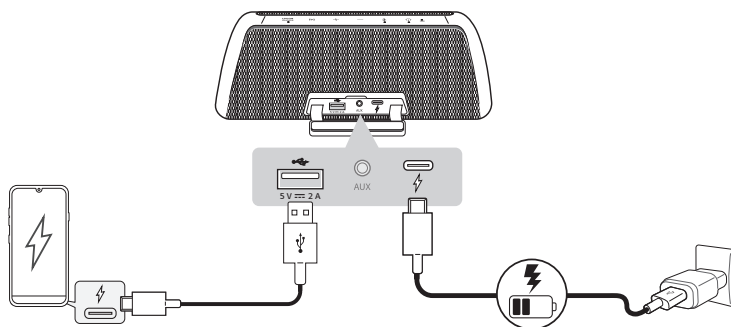
## Please check the following first.

- The method of charging your smartphone differs depending on the device. Refer to your smartphone's manual.
- You can only charge your smartphone in **Bluetooth** mode.

- 1 Open the back cover of the speaker and connect the smartphone to the  (5 V  2 A) terminal via a USB cable type (C to A cable, it is provided). The smartphone starts to be charged.

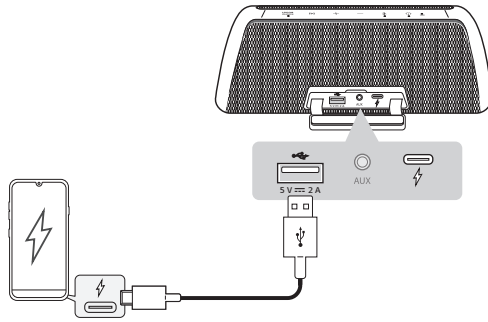


- 2 Depending on whether the speaker is charging or not, the smartphone can be charged.



Power input / Speaker status	Smartphone charging
Connected / Power On	0
Connected / Power Off	0







Power input / Speaker status	Smartphone charging
Disconnected / Power On	○*
Disconnected / Power Off	X

**✔ Note**

- When charging the smartphone by speaker, the battery of speaker is consumed.
- Devices other than smartphone can not be charged.
- \*If the Auto Power Management function is enabled when the power input is disconnected, the smartphone is not charged when the speaker is turned off.

**⚠ CAUTION**

Do not use the  (DC IN) terminal of the speaker to charge the smartphone. Using the  (DC IN) port connected to your smartphone will charge the speaker from the phone's battery depleting it rapidly.

## Resetting the Speaker

You can reset the speaker when it operates improperly.

- 1 Press and hold the **Power** (⏻) and **SOUND BOOST** (🔊) buttons on the speaker for 7 seconds simultaneously. Then the speaker will turn off automatically.



- 2 Turn on by pressing the **Power** (⏻) button.

## Resetting Bluetooth

Resetting **Bluetooth** initializes all the **Bluetooth** and speaker connections as well as the user settings.

- 1 Press and hold the **Bluetooth** (⌘) button on the speaker for 7 seconds. **Power** LED and **Bluetooth** LED will blink four times.



- 2 Connect the smart device to the speaker via **Bluetooth**. (→ See "Connecting Smartphone to the Speaker via Bluetooth" on page 10.)

## Using Auto Power Management

- When the charging cable is plugged in: If there is no input signal or button operation, the speaker turns off automatically after 15 minutes.
- When the charging cable is not plugged in: If there is no input signal or button operation, the speaker turns off automatically after 6 hours.

The Auto Power Management function can be enable or disable as shown below.

Function	How to Use
Enable	Press and hold <b>Power</b> (⏻) and <b>Volume</b> (+) buttons for 2 seconds simultaneously. <ul style="list-style-type: none"><li>• The <b>Power</b> LED will blink five times with beep sound.</li></ul>
Disable	Press and hold <b>Power</b> (⏻) and <b>Volume</b> (-) buttons for 2 seconds simultaneously. <ul style="list-style-type: none"><li>• The <b>Power</b> LED will blink five times with beep sound.</li></ul>

### ✔ Note


- You can enable or disable this function on the **LG XBOOM app**.
- When using the Wireless Party Link, the Auto Power Management time works for 15 minutes (plugged in) or 6 hours (not plugged in) depending on the charging cable connection status of the Main speaker.
- If this function is disabled, the speaker turns off only when the **Power** (⏻) button is pressed or the battery is discharged.

## Using Auto power - on.

You can easily use the speaker with your **Bluetooth** device.

### Please check the following first.

- The speaker has a history of **Bluetooth** connection with the **Bluetooth** device.
- The speaker is charging and the power is off.

- 1 Tap the **Setting** button on your **Bluetooth** device and select  **Bluetooth**.
- 2 Turn on the **Bluetooth** function. (Off  > On )
- 3 You will see a list of connectable devices on the **Bluetooth** device screen. Find and tap "LG-XG7Q (XX)".
- 4 The speaker power is turned on automatically. Then the **Bluetooth** device and the speaker are connected automatically.

---

### ✔ Note

- You can turn this function on and off with the **LG XBOOM app** only.
- 

## Voice feedback function

When you select a function or sound, the current status of the product is guided by voice. (English voice only.)

You can turn this function on and off with **LG XBOOM app** only.

# Safety Precautions

## | Safety and Regulatory



---

**CAUTION:** TO REDUCE THE RISK OF ELECTRIC SHOCK DO NOT REMOVE COVER (OR BACK) NO USER-SERVICEABLE PARTS INSIDE. REFER SERVICING TO QUALIFIED SERVICE PERSONNEL.



This lightning flash with arrowhead symbol within an equilateral triangle is intended to alert the user to the presence of uninsulated dangerous voltage within the product's enclosure that may be of sufficient magnitude to constitute a risk of electric shock to persons.



The exclamation point within an equilateral triangle is intended to alert the user to the presence of important operating and maintenance (servicing) instructions in the literature accompanying the product.

### **WARNING:**

- TO PREVENT FIRE OR ELECTRIC SHOCK HAZARD, DO NOT EXPOSE THIS PRODUCT TO RAIN OR MOISTURE.
- Do not install this equipment in a confined space such as a book case or similar unit.

### **CAUTION:**

- Do not use high voltage products around this product. (ex. Electrical swatter) This product may malfunction due to electrical shock.
- No naked flame sources, such as lighted candles, should be placed on the apparatus.
- Do not block any ventilation openings. Install in accordance with the manufacturer's instructions. Slots and openings in the cabinet are provided for ventilation and to ensure reliable operation of the product and to protect it from over heating. The openings should never be blocked by placing the product on a bed, sofa, rug or other similar surface. This product shall not be placed in a built-in installation such as a bookcase or rack unless proper ventilation is provided or the manufacturer's instruction has been adhered to.
- The apparatus should not be exposed to water (dripping or splashing) and no objects filled with liquids, such as vases, should be placed on the apparatus.
- For safety marking information including product identification and supply ratings, please refer to the main label on the bottom or the other surface of the product.

**CAUTION concerning the Power Cord**

The Power Plug is the disconnecting device. In case of an emergency, the Power Plug must remain readily accessible.

Check the specification page of this owner's manual to be certain of the current requirements.

Do not overload wall outlets. Overloaded wall outlets, loose or damaged wall outlets, extension cords, frayed power cords, or damaged or cracked wire insulation are dangerous. Any of these conditions could result in electric shock or fire. Periodically examine the cord of your device, and if its appearance indicates damage or deterioration, unplug it, discontinue use of the device, and have the cord replaced with an exact replacement part by an authorised service centre.

Protect the power cord from physical or mechanical abuse, such as being twisted, kinked, pinched, closed in a door, or walked upon. Pay particular attention to plugs, wall outlets, and the point where the cord exits the device.

**CAUTION** when using this product in environments of low humidity

- It may cause static electricity in environments of low humidity.
- It is recommended to use this product after touching any metal object which conducts electricity.

### For models using a battery

This device is equipped with a portable battery or accumulator.

**CAUTION:** Risk of fire or explosion if the battery is replaced by an incorrect type.

### For models using a built-in battery

Do not store or transport at pressures lower than 11.6 kPa and at above 15,000 m altitude.

- Replacement of a battery with an incorrect type that can defeat a safeguard (for example, in the case of some lithium battery types);
- Disposal of a battery into fire or a hot oven, or mechanically crushing or cutting of a battery, that can result in an explosion;
- Leaving a battery in an extremely high temperature surrounding environment that can result in an explosion or the leakage of flammable liquid or gas; and
- A battery subjected to extremely low air pressure that may result in an explosion or the leakage of flammable liquid or gas.

### Symbols

~ : Alternating current (AC).

— : Direct current (DC).

Ⓜ : This is a class II equipment.

⏻ : Standby power state.

⏻ : The power is turned on.

⚡ : Danger voltage.

# Before Reporting Product Malfunction

## Troubleshooting


If you experience the following issues while using the product, please perform several checks, as they may not be malfunctions.

Symptom	Cause and Solution
<b>Power is not supplied.</b>	<ul style="list-style-type: none"><li>• The battery is discharged. Recharge the battery.</li><li>• Connect the speaker to the charging adapter.</li></ul>
<b>There is no sound or the sound is distorted.</b>	<ul style="list-style-type: none"><li>• The volume of the speaker or the smart device may be set to the minimum. Adjust the volume on the speaker or the smart device appropriately.</li><li>• Turning on the volume to the maximum on the external device may result in distorted sounds. Lower the volume on the external device.</li></ul>
<b>Bluetooth connection failed.</b>	<ul style="list-style-type: none"><li>• Turn off the <b>Bluetooth</b> setting and on again on the <b>Bluetooth</b> device.</li><li>• Check if the <b>Bluetooth</b> setting is enabled.</li><li>• Make sure that there is no obstacle between the speaker and the <b>Bluetooth</b> device.</li><li>• <b>Bluetooth</b> pairing may fail depending on the <b>Bluetooth</b> device type and the surrounding environment.</li></ul>
<b>The device does not operate normally.</b>	<ul style="list-style-type: none"><li>• Battery discharge may cause the <b>Bluetooth</b> information to be deleted. If the speaker's power supply is blocked, previous settings may not be saved.</li><li>• Use this product in a place where the temperature and humidity are not too high or low. If the problem continues, contact LG Electronics' Customer Service Centre.</li><li>• <b>Power</b> LED and <b>Bluetooth</b> LED blink when the speaker malfunction occurs and the speaker does not operate normally. Turn the power off and then on again.</li><li>• If a problem occurs while charging the battery of the product, the battery LED alternates between red and amber and charging stops. Unplug the adapter from the outlet.</li></ul>
<b>The above solutions do not work.</b>	<ul style="list-style-type: none"><li>• Press and hold the <b>Power</b> (🔌) and <b>SOUND BOOST</b> (🔊) buttons on the speaker for 7 seconds simultaneously. (→ See "Resetting the Speaker" on page 26.)</li></ul>



# Appendix

## Specifications

General	
Power Supply	5 V  2 A (AC adapter) Built-in rechargeable battery
Power consumption	Refer to the main label.
Dimensions (W x H x D)	Approx. 261 mm x 98 mm x 95 mm
Temperature	5 °C - 35 °C
Humidity	5 % - 60 % RH
Ingress Protection	IP67

Input	
AUX (Portable in)	0.5 Vrms (3.5 mm stereo terminal) × 1

Output	
USB	5 V  2 A (USB port for charging the smartphone) × 1

Battery	
Battery capacity	3900 mAh
Operating time	About 24 hours Operation time may vary depending on the battery or operation status.
Charging time	5 hours or lower Charging time may vary depending on the battery or operation status.

- Design and specifications are subject to change without notice.

# Registered Trademarks and Licenses

All trademarks and trade names are the property of their respective owners.



The **Bluetooth**® word mark and logos are registered trademarks owned by the **Bluetooth** SIG, Inc. and any use of such marks by LG Electronics is under license.

Other trademarks and trade names are those of their respective owners.



“Made for iPhone,” and “Made for iPod” mean that an electronic accessory has been designed to connect specifically to iPhone, or iPod, respectively, and has been certified by the developer to meet Apple performance standards. Apple is not responsible for the operation of this device or its compliance with safety and regulatory standards. Please note that the use of this accessory with iPhone or iPod may affect wireless performance.

The system is compatible with the latest iOS. Depending on your iPhone/iPod software version, you may not control your iPhone/iPod from the unit.



# | Handling the Product

## **When shipping the Product**

Please save the original shipping carton and packing materials. If you need to ship the product, for maximum protection, re-pack the product as it was originally packed at the factory.

## **Keeping the exterior surfaces clean**

- Do not use volatile liquids such as insecticide spray near the product.
- Wiping with strong pressure may damage the surface.
- Do not leave rubber or plastic products in contact with the product for a long period of time.

## **Cleaning the product**

To clean the product, use a soft, dry cloth. If the surfaces are extremely dirty, use a soft cloth lightly moistened with a mild detergent solution. Do not use strong solvents such as alcohol, benzene, or thinner, as these might damage the surface of the product.

