

# MARTIN

FURNITURE



## **WARRANTY INFORMATION**

---

All Martin Furniture products carry a one-year limited warranty to be free of manufacturing defects in workmanship. Component parts not manufactured by Martin Furniture such as electrical light fixtures, light bulbs, electrical power centers and electric lifts are warranted by those respective manufacturers. Cost of transportation to our factory will be the responsibility of the customer. After the item is returned to our factory, we will repair or replace with same or similar unit, at our discretion. If defective, the product will be repaired or replaced and shipped back to the dealer at no cost. This warranty is void if Martin Furniture deems said damage was caused by abuse, negligence, modification, or by accident. Please contact the company for additional information.

## **ADDITIONAL INFORMATION**

---

Our factory reserves the right to make modifications to size, style and price without notice. Photographic representations of wood finishes may vary. Dimensions are rounded and include crown moldings.

# OFFICE COLLECTIONS

---

Abby	03-04
Addison	05-06
Avondale	07-08
Canyon Drive	09-10
Carson	11-12
Delray	13-14
Durham	15-16
Fairmont	17-18
Fulton	19-20
Hartford Black	21-22
Hartford White	23-24
Kingston	25-27
Laurel	28-29
Lift Desks	30-31
Mason	32-33
Porter	34-36
Quincey	37-38
Shasta	39-40
Sonoma	41-42
Stratton	43
Toulouse	44-45



# Abby Collection



MARTIN  
FURNITURE





The Abby collection blends modern versatility with classic looks. Simple refined details such as modern shaker doors and bead board panels are accentuated with simple black hardware and a crisp white finish. Behind each door or drawer, you will find the quality and functionality you've come to expect from Martin Furniture. Ergonomic design and current technology have been thoughtfully integrated into this collection with adjustable height desks and built-in power centers. Abby is clean and elegant, perfect for shared family spaces that can be combined in any arrangement to create your ideal home office, media room or workspace.

**A / Lateral File**

IMAY450 - 32w x 30h x 21d

Two file drawers, top drawer locks

**B / Electric Sit/Stand L-Shape Desk**

IMAY387TR/386EB - 60w x 30-45h x 71.5d

Four utility drawers, Two grommets, Power center with AC power outlets and USB 2.0 ports, Height adjusts from 30" to 45" with programmable memory settings, Finished on all sides, Two units (top and base) required for assembly

**C / Bookcase with Doors**

IMAY3278D - 32w x 78h x 13d

One stationary shelf, Four adjustable shelves, Two doors

**D / Open Bookcase**

IMAY3278 - 32w x 78h x 13d

One stationary shelf, Four adjustable shelves

**E / Double Pedestal Desk**

IMAY680 - 68w x 30h x 28d

Five utility drawers, Two locking file drawers, Two grommets, Finished on all sides

**F / Hutch**

IMAY682 - 70w x 48h x 13d

Two wood doors with one adjustable shelf behind each, Two glass doors with one adjustable shelf behind, Bead board back panel raised for wire management

**G / Credenza**

IMAY689 - 68w x 30h x 21d

Five utility drawers, Two locking file drawers, Power center with AC power outlets and USB 2.0 ports

**H / Electric Sit/Stand Desk**

IMAY384T /384EB - 60w x 30-45h x 28d

Three drawers, Two grommets, Power center with AC power outlets and USB 2.0 ports, Height adjusts from 30" to 45" with programmable memory settings, Finished on all sides, Two pieces (top and base) required for assembly

**Pedestal L-desk for RHF Return (front)**

IMAY664R - 60w x 30h x 28d

Three utility drawers, One locking file drawer, Two grommets, Two pieces (desk and return) required for assembly, Finished on all sides

**RHF Return for Pedestal L-desk (front)**

IMAY664R-R - 47.5w x 30h x 21d

Three utility drawers, One locking file drawer, Power center with AC outlets and USB 2.0 ports, Two pieces (desk and return) required for assembly, Finished on all sides



# Addison Collection



MARTIN  
FURNITURE





The Addison collection is inspired by antique, industrial tool boxes. Its dry Auburn finish highlights the natural beauty of the open grain veneers. Heavy iron casters with optional lock add function to the design. Black iron corner brackets and strapping add an element of authenticity, while light distressing enhances the aged appearance.



**A / WRITING DESK**

IMAD384 - 55w x 30h x 27d

Drop-down keyboard/pencil tray, Two utility drawers, Power center with two AC power outlets & three USB 2.0, Two wire management grommets, Finished on all sides.

**B / LATERAL FILE**

IMAD450 - 33w x 31h x 20d

One legal/letter file drawer, One utility drawer

**C / BOOKCASE WITH LOWER DOORS**

IMAD3472D - 34w x 72h x 15d

Two self closing wood panel doors, Three adjustable shelves, One fixed shelf

**D / OPEN BOOKCASE**

IMAD3472 - 34w x 72h x 15d

Three adjustable shelves, One fixed shelf

**E / HALF PEDESTAL DESK**

IMAD660 - 60w x 30h x 28d

Drop-down keyboard/pencil tray, Two utility drawers, Two locking legal/letter file drawers, Two wire management grommets, Finished on all sides

**F / ELECTRIC SIT-STAND DESK**

IMAD384TL - 55w x 30-45h x 25d

Electric height adjustable desk ranges from 30" to 45", Two wire management grommets, Assembly required





# Avondale Collection



MARTIN  
FURNITURE





**A / WRITING DESK**

AE384 - 58w x 31h x 28d

Drop front keyboard/pencil drawer, Power center with two AC power outlets & three USB 2.0, Requires minor assembly

*\*Also available in Farmhouse White (AE384W) & Rustic Gray (AE384G)*

**B / LATERAL FILE**

AE450 - 34w x 30h x 21d

Two legal/letter file drawers, top drawer lock

*\*Also available in Farmhouse White (AE450W) & Rustic Gray (AE450G)*

**C / BOOKCASE**

AE4872 - 48w x 72h x 16d

One sliding door, Center divide, Eight adjustable shelves

*\*Also available in Farmhouse White (AE4872W) & Rustic Gray (AE4872G)*

**D / BOOKCASE**

AE4094G - 40w x 94h x 15d

Four adjustable shelves, Sized to fit perfectly in rooms with eight foot ceilings

*\*Also available in Farmhouse White (AE4094W) & Weathered Oak (AE4094)*

**E / METAL LADDER**

IMTE402 - 14.5w 90h x 3d

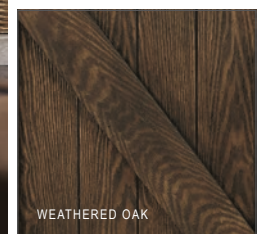
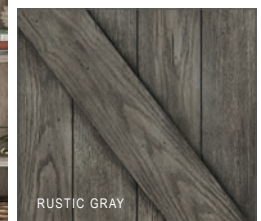
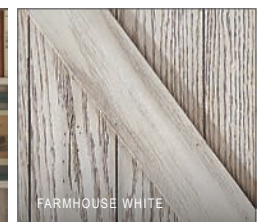
**F / CONSOLE**

AE360W - 60w x 31h x 19d

Two sliding doors, Three adjustable shelves

*\*Also available in Rustic Gray (AE360G) & Weathered Oak (AE360)*

From the steel rails and exposed wheels to the mortise and tenon details Avondale speaks to simplicity. All pieces are available in three finishes: Weathered Oak, Rustic Gray, and Farmhouse White that highlight the natural wood grain, and complement the basic barn door style. Heavy plank tops and solid timber legs work together to create the authentic look.





# Canyon Drive Collection



MARTIN  
FURNITURE



# Canyon Drive Office Collection

MARTIN  
FURNITURE



**A / Pedestal Desk with RHF Open Return**

IMCD684 – 70w x 30h x 72d  
Pedestal Desk – 70w x 30h x 24d  
Open Return – 48w x 30h x 22d

Two pencil drawers, Two utility drawers, One locking file drawer, Finished on all sides

**B / Lateral File**

IMCD450 – 32w x 30h x 18d

Two file drawers, Top drawer locks

**C / Open Bookcase**

IMCD3278 – 32w x 78h x 12.5d

One stationary shelf, Four adjustable shelves

**D / Bookcase with Doors**

IMCD3278D – 32w x 78h x 12.5d

Two lower wood doors One stationary shelf, Three adjustable shelves

**E / Double Pedestal Desk**

IMCD680 – 68w x 30h x 28d

One pencil drawer, Four utility drawers, Two locking file drawers, Finished on all sides

**F / Sideboard**

IMCD370 – 66w x 36h x 18d

Four door storage area with two adjustable shelves, Signature U leg design

**Writing Desk**

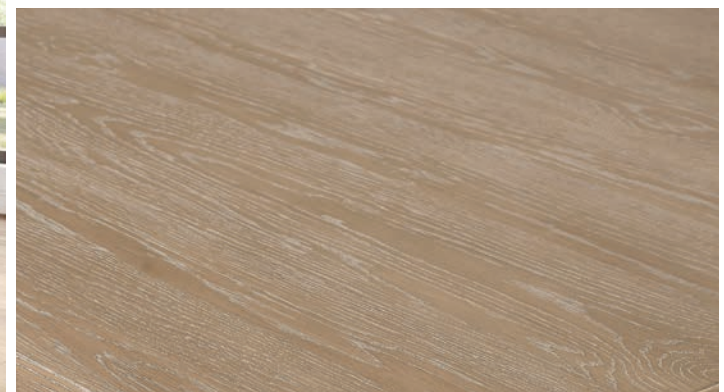
(shown on front)

IMCD384 – 60w x 30h x 28d

One utility drawer, Finished on all sides



Introducing our Canyon Drive Office Collection, meticulously crafted to elevate your workspace. Embracing a timeless aesthetic, each piece boasts a natural oak finish delicately enhanced by a light glaze, exuding sophistication, and warmth. Featuring heavy bar pull hardware and bold U shapes on the desks and storage solutions that are sure to make a statement in any workspace.





# Carson Collection



MARTIN  
FURNITURE





Constructed of solid lumber and veneers, Carson Office fits well in any home. Weathered dove finish accentuates the natural open grain, creating a casual yet elegant look. Mottled antique finish hardware and four point diamond metal accents enhance the Carson collection.



**A / HUTCH**

IMCA682 - 70w x 46h x 15d

Wood frame center glass shelf, Center touch control light, Two adjustable shelves

**B / CREDENZA**

IMCA689 - 68w x 30h x 19d

Drop-down keyboard/pencil tray, Three utility drawers, One legal/letter file drawer, Right Hand Facing door with printer pull out tray

**C / DOUBLE PEDESTAL DESK**

IMCA680 - 68w x 30h x 28d

Pencil drawer, Four utility drawers, Two legal/letter file drawers, Two grommets for wire management, Finished on all sides

**D / OPEN BOOKCASE**

IMCA4076 - 40w x 76h x 15d

Three adjustable shelves

**E / WRITING DESK**

IMCA384 - 54w x 30h x 27d

Drop-down keyboard/pencil tray, Two utility drawers, Two AC and three USB outlets in concealed desk top power bay, Charging shelf accommodates phones and tablets, Finished on all sides

**F / LATERAL FILE**

IMCA450 - 36w x 30h x 21d

Two legal/letter file drawers, Top drawer locks

**G / OPEN L-SHAPED DESK**

IMCA386R - 60w x 30h x 27d, IMCA386R-R - 48w x 30h x 21d

Center pencil drawer, Two utility drawers, Drop-down keyboard/pencil tray, Power center with two AC power outlets & three USB 2.0 connections, Finished on all sides

**H / GLASS DISPLAY CABINET**

IMCA4270 - 42w x 70h x 15d

Two adjustable shelves

**I / ELECTRIC SIT/STAND DESK**

IMCA384T - 60w x 6h x 27d, IMCA384EB - 43w x 13h x 17.5d

Drop-down keyboard/pencil tray, Two utility drawers, Two AC and three USB outlets in concealed desk top power bay, Charging shelf accommodates phones and tablets, Electronic height adjustable base with programmable memory settings (30-45"), Finished on all sides

**J / L-SHAPED DESK**

IMCA684R - 68w x 30h x 28d, IMCA684R-R - 48w x 30h x 24d

Two drop-down keyboard/pencil trays, Three utility drawers, One locking letter/legal file drawer, Two wire management grommets, Right Hand Facing door with pull-out printer tray, Power center with two AC power outlets & three USB 2.0 connections, Finished on all sides

**DELUXE SIT/STAND DESK (Not shown)**

IMCA6030 - 60w x 30h x 28d

Electronic height adjustable base with programmable memory settings (30-45"), Finished on all sides

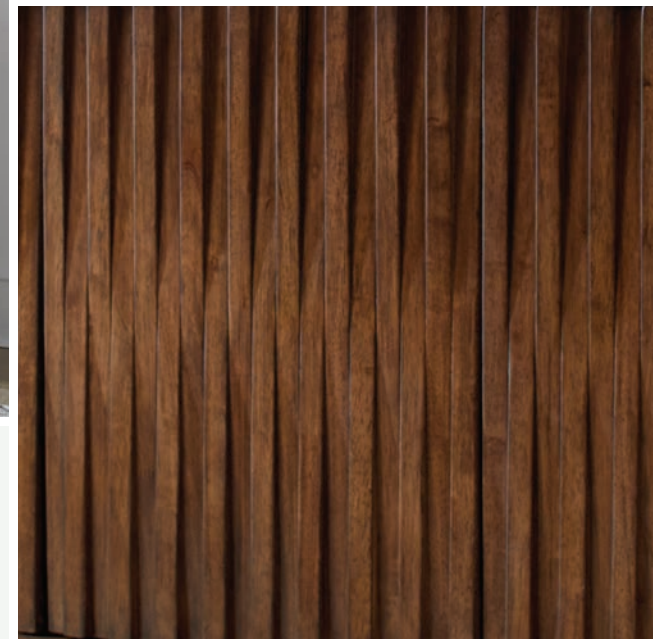


# Delray Collection



MARTIN  
FURNITURE





The Delray Collection combines timeless style with contemporary charm, capturing the essence of mid-century aesthetics perfectly. With alternating slat textured fronts accented with sleek metal stretchers, this collection exudes a unique and captivating visual appeal. The contrasting textures add depth and character to each piece, creating a stunning focal point in any room.

**A / Console/Credenza**  
IMDY370 – 71.5w x 32h x 16d

Four doors, Two adjustable shelves

**B / Writing Desk**  
IMDY384 – 60w x 30h x 28d

Center pencil drawer, Two box utility drawers, Power center with AC power outlets and USB 2.0 ports for convenient charging, Finished on all sides

**C / Small Console with File Drawer**  
IMDY420 – 42w x 30h x 21d

Two box utility drawers, One file drawer, One door with adjustable shelf behind

**D / Glass Door Bookcase/Display Cabinet**  
IMDY3872D – 38w x 72h x 16d

Tempered glass doors, One storage drawer, Two adjustable shelves

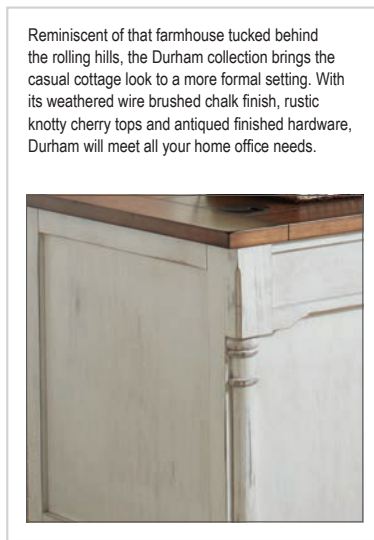


# Durham Collection



MARTIN  
FURNITURE





Heritage Stand Up Return is adjustable between 30" - 45", with 3 programmable heights

Reminiscent of that farmhouse tucked behind the rolling hills, the Durham collection brings the casual cottage look to a more formal setting. With its weathered wire brushed chalk finish, rustic knotty cherry tops and antiqued finished hardware, Durham will meet all your home office needs.

- A / 66" DOUBLE PEDESTAL EXECUTIVE DESK**  
IMDU680 - 66w x 30h x 30d  
Pencil drawer, Four utility drawers, Two legal/letter drawers, Power center with two AC power outlets & three USB 2.0 connections
- B / LOW HUTCH**  
IMDU470 - 70w x 12h x 16d  
Credenza hutch, Two utility drawers with drop down tablet holder
- C / 70" CRENDENZA**  
IMDU689 - 70w x 30h x 24d  
Drop front keyboard/pencil tray, Three utility drawers, One legal/letter drawer, Door with printer pull out tray
- D / BOOKCASE WITH LOWER DOORS**  
IMDU4278D - 42w x 78h x 16d  
Lower door bookcase with three adjustable shelves
- E / 60" WRITING/PARTNERS DESK**  
IMDU386 - 60w x 30h x 30d  
Partners desk, Drawers slide open from either side
- F / WRITING DESK**  
IMDU686 - 64w x 30h x 30d  
Drop front keyboard/pencil tray, Finished on all sides
- G / RETURN FOR WRITING DESK**  
IMDU686R - 45w x 30h x 18d  
Drop front keyboard/pencil tray, Can attach right or left facing, Finished on all sides
- H / LATERAL FILE**  
IMDU455 - 36w x 30h x 22d  
One locking legal/letter drawer, Two utility drawers
- I / SIT/STAND DESK**  
IMDU384T, IMDU384EB - 60w x 32h x 28d  
Three utility drawers, Electronic height adjustable top base with programmable memory settings (30-45"), Two AC and three USB outlets in concealed desk top power bay, Charging shelf accommodates phones and tablets



# Fairmont Collection



MARTIN  
FURNITURE





Elegant and modern, the Fairmont collection invokes simple design properties tied together with earthy, subtle tones that bring a soothing presence to any home or office setting. Available in a lightly-weathered Dusty Blue finish, the collection's natural wood tops and dark bronze hand pulls add a touch of warmth atop clean lines and tapered legs.

**A / Half Pedestal L-Desk**  
IMFT664RB - 60w x 30h x 24d

Pencil drawer, Two utility drawers, Ball bearing glides, Two wire management grommets, Finished on all sides, Easy to attach legs

**B / Return for Half Ped L-Desk**  
IMFT664RB-R - 40w x 30h x 18d

Pencil drawer, One large storage drawer, Ball bearing glides, Power center with one AC outlet and one USB 2.0 connection, Finished on all sides, Easy to attach legs

*\*Desk & Return must be sold as set*

**C / File Cabinet**  
IMFT201B - 20w x 30h x 21d

One letter-size file drawer and two utility drawers, Ball bearing glides, Finished on all sides, Fully assembled

**D / Open Bookcase**  
IMFT3072B - 30w x 72h 13d

Three adjustable shelves, One fixed shelf, KD construction

**E / Open L-Desk**  
IMFT386RB - 48w x 30h x 24d

Pencil drawer, Ball bearing glides, Power center with one AC outlet and one USB 2.0 connection, Finished on all sides, Easy to attach legs

**F / Return for Open L-Desk**  
IMFT386RB-R - 38w x 30h x 16d

Pencil drawer, Ball bearing glides, Wire management grommet, Finished on all sides, Easy to attach legs

*\*Desk & Return must be sold as set*

**G / Writing Table**  
IMFT384B - 48w x 30h x 24d

Pencil drawer, Ball bearing glides, Power center with one AC outlet and one USB 2.0 connection, Finished on all sides, Easy to attach legs

**H / Electric Sit-Stand Desk**  
IMFT384TB, EB300  
48w x 30 - 45h x 24d

Electric height-adjustable desk ranges from 30" to 45", Two wire management grommets, Easy to attach legs

**Half Pedestal Desk** (shown on front)  
IMFT660B - 55w x 30h x 27d

Drop-down keyboard/pencil tray, Two utility drawers and one large storage drawer, Ball bearing glides, Power center with one AC outlet and one USB 2.0 connection, Finished on all sides, Easy to attach legs



# Fulton Collection

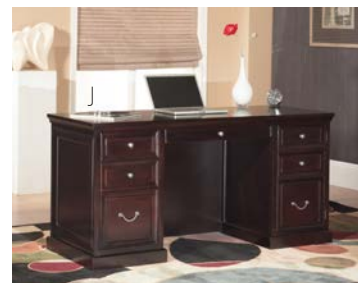


MARTIN  
FURNITURE



# Fulton Office Collection

MARTIN  
FURNITURE



**A / LATERAL FILE**

FL450 - 32w x 30h x 21d

Two letter/legal file drawers, One locking file drawer

**B / EXECUTIVE HUTCH**

FL682 - 69.25w x 42h x 13d

Two fixed shelves, Two adjustable shelves, Two glass shelves, Two wood doors

**C / L-SHAPED DESK**

FL684L/FL684L-R - 68.25w x 30h x 75.25d

Two drop-front keyboard/pencil drawers, One locking file drawer, Wire management grommets, Finished on all sides

**D / L-SHAPED DESK**

FL664R/FL664R-R - 20.75w x 29h x 24.5d

One drop-front keyboard/pencil drawer, One pencil drawer, Two utility drawers, One legal/letter file drawer, One door with pull-out printer tray, Wire management grommets, Finished on all sides

**E / OPEN BOOKCASE**

FL3072 - 30w x 72h x 13.5d

Two fixed shelves, Three adjustable shelves

**F / LOWER DOOR BOOKCASE**

FL3072D - 30w x 72h x 13.5d

Two fixed shelves, Three adjustable shelves, Two wood doors

**G / ELECTRIC SIT/STAND DESK**

FL384T/384EB - 60w x 30-45h x 28d

Center pencil drawer, Two utility drawers, Power center with two AC power outlets & three USB 2.0, Shelf accommodates phones and tablets, Two wire management grommets, Electronic height adjustable memory settings

**H / COMPUTER CREDENZA**

FL689 - 68w x 30h x 24d

One drop-front keyboard/pencil drawer, One adjustable shelf, One utility drawer, One utility drawer with dividers, One locking letter/legal file drawer, One wood door with storage space, Wire management grommets, Unfinished back

**I / 72" DOUBLE PEDESTAL DESK**

FL720 - 72w x 30h x 35d

One drop-front keyboard/pencil drawer, Two utility drawers, Two utility drawers with dividers, Two locking letter/legal file drawers, Wire management grommets

**J / DOUBLE PEDESTAL DESK**

FL660 - 61w x 30h x 23.25d

One drop-front keyboard/pencil drawer, One utility drawer, One utility drawer with dividers, One locking file drawer, One pull-out printer tray, Finished on all sides

**K / DOUBLE PEDESTAL DESK**

FL680 - 68.25w x 30h x 32d

One drop-front keyboard/pencil drawer, Four utility drawers, Two locking letter/legal file drawers, Wire management grommets, Finished on all sides

**L / EXPANDABLE CONFERENCE TABLE**

FL20 - 20w x 30h x 20d

FL48 - 4.25w x 30h x 47.25d

Wire management grommet, Finished on all sides

Fulton is a soft modern collection that blends traditional design elements like crown molding and picture frame detailing with contemporary influences like clean lines, satin nickel hardware and a rich espresso finish. Bring the best of both design worlds into your home with the Fulton home office collection, a true design solution for living.



# Hartford Black Collection



MARTIN  
FURNITURE





The Hartford collection combines bold lines with a weathered, vintage finish and classic style elements. The warm, two tone rubbed finish gives Hartford the relaxed feel of old world wood and the sophisticated turnbuckle and wire mesh details add a formal element. The Hartford collection will be right at home in either a classic formal setting or a more relaxed, eclectic home.



Power Center with two AC power outlets & three USB 2.0 connections, available on IMHF384, IMHF386R-R, IMHF684R-R, and IMHF689



**A / DOUBLE PEDESTAL DESK**  
IMHF680 - 69.5w x 31h x 30d

Drop front keyboard/pencil drawer, Two grommets for wire management, Four utility drawers, Two locking letter/legal file drawers

**B / CREDENZA**  
IMHF689 - 69.5w x 31h x 21d

Drop front keyboard/pencil drawer, Three utility drawers, One locking letter/legal file drawer, Faux drawer door with printer pullout, Power center with two AC power outlets & three USB 2.0 connections

**C / HUTCH**  
IMHF682 - 70.5w x 49h x 14d

One adjustable storage shelf, Two self-closing wire doors, Two utility drawers, Touch activated lighting system

**D / BOOKCASE WITH LOWER DOORS**  
IMHF4078D - 40w x 78h x 14d

Two self-closing wire mesh doors with adjustable wood shelves

**E / OPEN BOOKCASE**  
IMHF4078 - 40w x 78h x 14d

Three adjustable wood shelves, One fixed shelf

**F / LATERAL FILE**  
IMHF450 - 36w x 31h x 21d

Two locking letter legal file drawers, Ball bearing glides

**G / OPEN L-DESK**  
IMHF386R - 60w x 31h x 28d

Drop front keyboard/pencil drawer, One utility drawer, Finished on all sides

**H / RIGHT RETURN FOR OPEN L-DESK**  
IMHF386R-R - 47.5w x 31h x 21d

Drop front keyboard/pencil drawer, One utility drawer, Power Center with two AC power outlets & three USB 2.0 connections, Finished on all sides

**I / RIGHT HAND FACING PEDESTAL DESK**  
IMHF684R - 69.5w x 31h x 30d

Drop front keyboard/pencil drawer, Two utility drawers with dividers, One locking letter/legal file drawer, Two wire management grommets, Finished on all sides.

**J / RIGHT HAND FACING RETURN FOR PEDESTAL DESK**  
IMHF684R-R - 47.5w x 31h x 23.75d

Drop front keyboard/pencil drawer, Two utility drawers with dividers, One locking letter/legal file drawer, Power Center with two AC power outlets & three USB 2.0 connections, Finished on all sides

**K / ELECTRIC SIT/STAND DESK**  
IMHF384T, 384EB - 60w x 30h x 28d

Three inset utility drawers, Power center with two AC power outlets & three USB 2.0, Shelf accommodates phones and tablets, Two wire management grommets, Electronic height adjustable memory settings ~ (30-47")

**L / WRITING DESK**  
IMHF384 - 60w x 31h x 28d

Drop front keyboard/pencil drawer, Two utility drawers, Power Center with two AC power outlets & three USB 2.0 connections, Finished on all sides



# Hartford White Collection



MARTIN  
FURNITURE





The Hartford White collection combines bold lines and classic style elements. The vintage linen finish allows natural wood grain to show through with added detail for an aged appearance. Desk tops and back panels offer contrast with beautifully patterned veneers in a dry gray finish. Black metal hardware and accents complete the design aesthetic for a look that is right at home in either a classic or a more relaxed, eclectic home.



**A / ELECTRIC SIT/STAND DESK**  
IMHF384TW, 384EB - 60w x 30-45h x 28d

Center pencil drawer and two utility drawers, Two AC and three USB outlets in concealed desk top power bay, Charging shelf accommodates phones and tablets, Electronic height adjustable base with programmable memory settings (30-45"), Two wire management grommets, Finished on all sides

**B / OPEN BOOKCASE**  
IMHF4078W - 40w x 78h x 14d

Three adjustable wood shelves, One fixed shelf

**C / OPEN L-DESK**  
IMHF386RW - 60w x 31h 28d

Drop front keyboard/pencil drawer, One utility drawer, Finished on all sides

**D / RIGHT RETURN FOR OPEN L-DESK**  
IMHF386R-RW - 48w x 31h 21d

Drop front keyboard/pencil drawer, One utility drawer, Power Center with two AC power outlets & three USB 2.0 connections, Finished on all sides

**E / WRITING TABLE**  
IMHF384W - 60w x 31h x 28d

Drop front keyboard/pencil drawer, Two utility drawers, Power Center with two AC power outlets & three USB 2.0 connections, Two wire management grommets, Finished on all sides

**F / LATERAL FILE**  
IMHF450W - 36w x 31h x 21d

Two locking letter legal file drawers, Ball bearing glides

**G / RIGHT HAND FACING PEDESTAL DESK**  
IMHF684RW - 70w x 31h x 30d

Drop front keyboard/pencil drawer, Two utility drawers with dividers, One locking letter/legal file drawer, Two wire management grommets, Finished on all sides.

**H / RIGHT HAND FACING RETURN FOR PEDESTAL DESK**  
IMHF684R-RW - 48w x 31h x 21d

Drop front keyboard/pencil drawer, Two utility drawers with dividers, One locking letter/legal file drawer, Power Center with two AC power outlets & three USB 2.0 connections, Finished on all sides

**I / BOOKCASE WITH LOWER DOORS**  
IMHF4078DW - 40w x 78h x 14d

Two self-closing panel doors with three adjustable wood shelves, One fixed shelf

**J / DOUBLE PEDESTAL DESK**  
IMHF680W - 70w x 31h x 30d

Drop front keyboard/pencil drawer, Two grommets for wire management, Four utility drawers, Two locking letter/legal file drawers

**K / CREDENZA**  
IMHF689W - 70w x 31h x 21d

Drop front keyboard/pencil drawer, Three utility drawers, One locking letter/legal file drawer, Faux drawer door with printer pullout, Power center with two AC power outlets & three USB 2.0 connections

**L / HUTCH**  
IMHF682W - 71w x 49h x 14d

One adjustable shelf behind each wood panel door, Center adjustable shelf, Two utility drawers



# Kingston Collection



MARTIN  
FURNITURE



# Kingston Office Collection

MARTIN  
FURNITURE



Kingston emanates an air of the English country manor. Dark chocolate rub through finish is softly worn to enhance the wood and give a naturally aged look to the collection. Criss-cross detail adds interest and dimension to drawer fronts and panels, while mottled antique hardware enhance the look of the group.



**A / Writing Desk**

IMKN384 - 60w x 30h x 28d

Three drawers, Power center with AC power outlets and USB 2.0 ports, Finished on all sides

**B / Lateral File**

IMKN450 - 36w x 30h x 22d

Two file drawers, Top drawer locks

**C / Open Bookcase**

IMKN3678 - 36w x 78h x 13.5d

One stationary shelf, Four adjustable shelves

**D / Lower Door Bookcase**

IMKN3678D - 36w x 78h x 13.5d

Two lower wood doors, Four adjustable shelves, One stationary shelf

**E / Electronic Sit/Stand Desk**

IMKN384T/384EB - 60w x 30-45h x 28d

Three drawers, Two grommets, Power center with AC power outlets and USB 2.0 ports, Finished on all sides, Two pieces (top and base) required for assembly

**F / Four Door Console**

IMKN370 - 70w x 32h x 17.5d

Four wood doors, Three adjustable shelves

**G / L Desk for RHF Return**

IMKN684R - 66w x 30h x 28d

Three utility drawers, One locking file drawer, Two grommets, Two pieces required for assembly, Finished on all sides

**H / RHF Return for L Desk**

IMKN684R-R - 42w x 30h x 21.5d

Three utility drawers, One locking file drawer, Power center with AC outlets and USB 2.0 ports, Two pieces (desk and return)

**I / Credenza**

IMKN689 - 66w x 30h x 22d

Five utility drawers, Two locking file drawers, Power center with AC power outlets and USB 2.0 ports

**Hutch** (shown on front)

IMKN682 - 66w x 48h x 14d

Two wood doors, Two adjustable shelves, Center open storage area

**Double Pedestal Desk** (shown on front)

IMKN680 - 66w x 30h x 28d

Five utility drawers, Two file drawers, Two grommets, Finished on all sides





**OPEN L-DESK\***

IMKN386R - 60w x 30h x 28d  
Two utility drawers, Two grommets,  
Finished on all sides

**RETURN FOR OPEN L-DESK\***

IMKN386R-R - 48w x 30h x 20d  
Two utility drawers, Power center with two AC power  
outlets & three USB 2.0 connections, Finished on all  
sides

\*Desk and return must be sold as set



**LIFT OPEN L-DESK\***

IMKN387TR / EB387 - 60w x 30-45h x 28d  
Two utility drawers, Two grommets,  
Finished on all sides

**RETURN FOR LIFT OPEN L-DESK\***

IMKN387TR-R / EB387 - 48.5w x 30-45h x 20d  
Two utility drawers, Power center with two AC power  
outlets & three USB 2.0 connections, Finished on all  
sides

\*Desk and return must be sold as set



# Laurel Collection



MARTIN  
FURNITURE





Laurel is inspired by today's relaxed lifestyle, set to create a statement. Its unique natural finish appears dry with wire brushing and cerusing to highlight the wood grain for added depth and texture. Laurel's scale is modern with arch elements that are pulled from traditional inspiration. Slight shaping of breakfronts and arched side panels create a softness that ties the collection together to form a clean and casual look, perfect to create calm in a busy workspace.

**A / Hutch**

IMLR682 - 66.8w x 48h x 15d

Two wood doors with one adjustable shelf behind each, Two glass doors with adjustable shelf, Back panel cut out for wire management

**B / Credenza**

IMLR689 - 66w x 30h x 22d

Two locking file drawers, Five storage utility drawers, Power center with AC power outlets and USB 2.0 ports

**C / Double Pedestal Desk**

IMLR680 - 66w x 30h x 28d

Two locking file drawers, Five storage utility drawers, Two grommets, Finished on all sides

**D / Lateral File**

IMLR450 - 36w x 30h x 21d

One locking file drawer, One storage utility drawer

**E / Open Bookcase**

IMLR3278 - 32w x 78h x 14d

One stationary shelf, Three adjustable shelves

**F / Half Pedestal Desk**

IMLR660 - 60w x 30h x 28d

Five utility drawers, Two grommets, power center with AC power outlets and USB 2.0 ports, Finished on all sides

**G / Arched Display Cabinet/Bookcase**

IMLR3678D - 36w x 78h x 18d

Two wood framed glass doors, Three drawers, Two adjustable shelves

**H / Console**

IMLR669 - 60w x 36h x 19d

Two door center storage area with one adjustable shelf and one pull out shelf for printer, Two side door storage areas with two adjustable shelves each



# Lift Desks Collection



MARTIN  
FURNITURE





## LIFT DESKS

Electric height-adjustable desk ranges from 30" to 48", Two wire management grommets, Stores up to four saved positions, Assembly required

**A / Light Gray Lift Desk**  
IMLD4724G - 47w x 30 - 48h x 24d

**B / Charcoal Lift Desk**  
IMLWD4724B - 47w x 30 - 48h x 24d

**C / Natural Wood Laminate Lift Desk**  
IMLD4724N - 47w x 30 - 48h x 24d



Light Gray and Natural Wood Laminate tops feature wood grain patterns

Give yourself the gift of comfort and functionality by adding a height-adjustable desk to your workspace setup. Available in Light Gray, Charcoal, and Natural Wood Laminate, these sleek and modern desks allow for up to four saved positions.



# Mason Collection



MARTIN  
FURNITURE





**A / Open L Desk for RHF Return**

MNC386R – 66w x 31h x 30d

One drawer, Two grommets, Finished on all sides, Two pieces (desk and return) required for assembly

*\*Also available in Monarca (MNM386R)*

**B / Return for Open L Desk**

MNC386R-R – 48w x 31h x 21d

One drawer, Power center with AC outlets and USB 2.0 ports, Finished on all sides, Two pieces (desk and return) required for assembly

*\*Also available in Concrete (MNC386R-R)*

**C / Rolling File**

MNC202 – 18w x 24h x 20d

One utility drawer, One locking file drawer, Finished on all sides

*\*Also available in Monarca (MNM202)*

**D / Open Bookcase**

MNC3678 – 36w x 78h x 12d

One stationary shelf, Three adjustable shelves

*\*Also available in Monarca (MNM3678)*

**E / Sit Stand Desk**

MNC384T/384EB – 57w x 30-45h x 24d

Three drawers, Two grommets, Power center with AC power outlets and USB 2.0 ports, Finished on all sides, Two pieces (top and base) required for assembly

*\*Also available in Monarca (MNM384T)*

**F / Lower Door Bookcase**

MNM3678D – 36w x 78h x 12d

Two doors, One stationary shelf, Three adjustable shelves

*\*Also available in Concrete (MNC3678D)*

**G / Writing Desk**

MNM384 – 60w x 31h x 30d

Three drawers, Two grommets, Power center with AC power outlets and USB 2.0 ports, Finished on all sides

*\*Also available in Concrete (MNC384)*

**H / Lateral File**

MNM450 – 34w x 31h x 21d

Two file drawers - top drawer locks

*\*Also available in Concrete (MNC450)*

**Double Pedestal Desk** (shown on front)

MNM680 – 66w x 31h x 30d

Five storage drawers, Two locking file drawers, Two grommets, Finished on all sides

*\*Also available in Concrete (MNC680)*

**Hutch** (shown on front)

MNM682 – 66w x 47.5h x 12d

Four doors, Two adjustable shelves, Four open storage cubbies

*\*Also available in Concrete (MNC682)*

**Credenza** (shown on front)

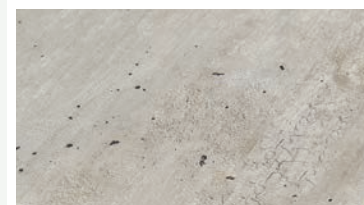
MNM689 – 66w x 31h x 21d

Five utility drawers, Two locking file drawers, Power center with AC outlets and USB 2.0 ports

*\*Also available in Concrete (MNC689)*



Mason uses Thermal Fused Laminate or "TFL" to create a durable office collection that is available in two finishes, "M" Monarca - natural wood look laminate and "C" Concrete - stone like laminate. Solid wood framing accents the laminate and lends a modern appeal, while contemporary metal hardware completes this look.





# Porter Collection



MARTIN  
FURNITURE

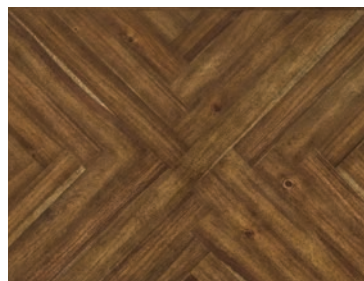


# Porter Office Collection

MARTIN  
FURNITURE



Porter is a standout collection with classic style. Natural wood veneers finished in warm brown with soft gold undertones feature a unique herringbone pattern with center "X" design. The vintage finish allows the natural wood grain to show through with added detail for an aged appearance, creating a casual yet elegant look. Captured end panels with additional moldings emphasize its clean straight forward appeal.



**A / Writing Desk**  
IMPR384 - 54w x 30h x 28d

Three drawers, Two grommets, Power center with AC power outlets and USB 2.0 ports, Finished on all sides

**B / Lower Door Bookcase**  
IMPR3474D - 34.5w x 74h x 14d

Two lower wood doors, Three adjustable shelves, One stationary shelf

**C / Open Bookcase**  
IMPR3474 - 34.5w x 74h x 14d

One stationary shelf, Three adjustable shelves

**D / Electronic Sit/Stand Desk**  
IMPR384T/384EB - 54w x 30-45h x 28d

Three drawers, Power center with AC power outlets and USB 2.0 ports, Finished on all sides, Two pieces (top and base) required for assembly

**E / Lateral File**  
IMPR450 - 34w x 30h x 22d

Two file drawers, Top drawer locks

**F / L Desk for RHF Return**  
IMPR684R - 68w x 30h x 28d

Three utility drawers, One locking file drawer, Two grommets, Two pieces required for assembly, Finished on all sides

**G / RHF Return for L Desk**  
IMPR684R-R - 42w x 30h x 22d

Three utility drawers, One locking file drawer, Power center with AC outlets and USB 2.0 ports, Two pieces (desk and return) required for assembly, Finished on all sides

**Hutch** (shown on front)  
IMPR682 - 68.5w x 44h x 13d

Two wood doors, Two adjustable shelves, Center open storage area with two cubbies

**Credenza** (shown on front)  
IMPR689 - 68.5w x 30h x 24d

Five utility drawers, Two locking file drawers, Power center with AC power outlets and USB 2.0 ports

**Double Pedestal Desk** (shown on front)  
IMPR680 - 68.5w x 30h x 28d

Five utility drawers, Two locking file drawers, Two grommets, Finished on all sides





**OPEN L-DESK\***

IMPR386R - 56w x 30h x 28d  
Two utility drawers, Two grommets,  
Finished on all sides

**RETURN FOR OPEN L-DESK\***

IMPR386R-R - 47w x 30h x 13d  
Two utility drawers, Power center with two AC  
power outlets & three USB 2.0 connections,  
Finished on all sides

\*Desk and return must be sold as set



# Quincey Collection



MARTIN  
FURNITURE



# Quincey Office Collection

MARTIN  
FURNITURE



**A / Half Pedestal Desk**  
IMQU660 – 54w x 31h x 24d

Three utility drawers and two large storage drawers, Ball bearing glides, Power center with two AC power outlets and three USB ports, Finished on all sides

**B / 70" 4 Door Console**  
IMQU370 – 70w x 34h x 15d

Four doors, Two adjustable shelves, Wire management holes

**C / Bookcase with Doors**  
IMQU3276D – 32w x 76h x 13d

Two lower wood doors, Three adjustable shelves, One stationary shelf

**Writing Desk** (shown on front)  
IMQU384 – 54w x 31h x 24d

Three drawers, Power center with two AC power outlets and three USB ports, Finished on all sides

**Lateral File** (shown on front)  
IMQU450 – 32w x 31h x 21d

Two file drawers, Top drawer locks

Upgrade your small office with the Quincey collection - sized just right with convenience and efficiency in mind. The warm mid-tone brown finish with golden highlights brings out the natural beauty of the wood veneers. Woven rattan adds natural texture. Delicate pewter knobs are the perfect accent to this simple yet stylish collection.





# Shasta Collection



MARTIN  
FURNITURE





## Shasta Collection

MARTIN  
FURNITURE

**A / Half Pedestal Desk**  
IMSH660 - 66w x 30h x 28d

Center pencil drawer, two utility drawers, Two file drawers, Two wire management grommets, Finished on all sides

**B / Lateral File**  
IMSH455 - 30w x 30h x 21d

One utility drawer, One file drawer

**C / Open Etagere**  
IMSH3676 - 36w x 77h x 16d

Four stationary open shelves, Finished on all sides, KD construction

The Shasta Collection is the epitome of versatility and style. Designed to effortlessly transition between glam and contemporary aesthetics. The tapered legs add a touch of modernity, while the clear acrylic pulls with gold accents exude glamour and refinement. Shasta will transform your space into a haven of elegance and sophistication.





# Sonoma Collection



MARTIN  
FURNITURE



# SONOMA COLLECTION

MARTIN  
FURNITURE



The Sonoma collection provides the elements to create a truly inspirational office environment. Hand planked wood veneers in a rich, dark roast finish the color of freshly brewed coffee, show highlights of natural wood that has aged and is mildly distressed. Distressing includes rasping, chopping and worm holes, along with varied species, solid wood plank tops that accent the dark finish and emphasize the wood's natural beauty for two-tone authenticity. Antique bronze hardware adds a shimmering touch.



**A / Double Pedestal Desk**  
IMSA680 - 68w x 30h x 28d

Drop-front keyboard/pencil drawer. Two locking file drawers. Four utility drawers. Two grommets for wire management. Finished on all sides.

**B / Lateral File**  
IMSA450 - 36w x 30h x 22d

One utility drawer. One locking letter/legal file drawer.

**C / Hutch**  
IMSA682 - 68w x 48h x 14d

Two doors. Two drawers. Three adjustable shelves.

**D / Credenza**  
IMSA689 - 68w x 30h x 24d

Drop-front keyboard/pencil drawer. One locking file drawer. Three utility drawers. Pull-out printer tray behind RSF faux drawer door. Power center with USB/AC outlets. Two grommets for wire management.

**E / Bookcase with Doors**  
IMSA3678D - 36w x 78h x 14d

Three adjustable shelves.

**F / Open Bookcase**  
IMSA3678 - 36w x 78h x 14d

Three adjustable shelves.

**G / Electric Sit/Stand Desk**  
IMSA384T/384EB - 54w x 30-45h x 28d

Drop-front keyboard/pencil drawer. Two utility drawers. Two grommets for wire management. Height adjusts from 30" - 45".

**H / Writing Desk**  
IMSA384 - 54w x 30h x 28d

Drop-front keyboard/pencil drawer. Power center with USB/AC outlets. Two grommets for wire management.

**I / Left Side Tall Bookcase**  
IMSA4094L - 40w x 94h x 14d

Two doors. Three adjustable shelves. Fits rooms with 8' ceilings.

**J / Center Tall Bookcase**  
IMSA4094C - 40w x 94h x 14d

Two doors. Three adjustable shelves. Fits rooms with 8' ceilings.

**K / Right Side Tall Bookcase**  
IMSA4094R - 40w x 94h x 14d

Two doors. Three adjustable shelves. Fits rooms with 8' ceilings.

**L / Wood Ladder**  
IMSA402 - 14.75w x 75h x 3d

**L Desk\*** (shown on front)  
IMSA684R - 68w x 30h x 28d

Drop-front keyboard/pencil drawer. One letter/legal file drawer. Two utility drawers. Two grommets for wire management. Finished on all sides.

**Right Hand Facing Return\***  
(shown on front)  
IMSA684R-R - 44w x 30h x 28d

Drop-front keyboard/pencil drawer. Two storage drawers. One file drawer. Power center with AC/USB outlets. Finished on all sides.

*\*Desk and Return must be sold together*



# Stratton Collection



**BOOKCASE**  
IMST4094 - 40w x 94h x 15d

Five adjustable shelves, Sized to fit perfectly in rooms with eight-foot ceilings

**METAL LADDER**  
IMST402 - 14w x 77h x 3d

MARTIN  
FURNITURE

STRATTON COLLECTION



# Toulouse Collection



MARTIN  
FURNITURE



# Toulouse Collection

MARTIN  
FURNITURE



**A / DOUBLE PEDESTAL DESK**  
IMTE680 - 68w x 30h x 30d

Drop-down keyboard/pencil tray, Four utility drawers, Two letter/legal file drawers.

**B / BOOKCASE**  
IMTE4094 - 40w x 94h x 15d

Five adjustable shelves, One fixed shelf, Sized to fit perfectly in rooms with eight foot ceilings

**C / METAL LADDER**  
IMTE402 - 14.5w 90h x 3d

**D / WRITING DESK**  
IMTE384 - 72w x 30h x 30d

Heavy cast base, Concealed pencil drawer

**E / STORAGE CREDENZA**  
IMTE689 - 68w x 30h x 18d

Four doors with two adjustable shelves, Four utility drawers

**LATERAL FILE** (Shown on front)  
IMTE450 - 36w x 30h x 22d

Two letter/legal file drawers, top drawer locks.

Reminiscent of a quaint French library, the Toulouse collection transforms any office or home into an elegant chateau. With its ringed steel frame, aged ebony finish and warm honey interior, the Toulouse bookcase wall creates an ideal showcase for cherished memories and collectibles discovered over a lifetime. The Toulouse desk features arched steel supports, an understated top in matching warm honey finish and includes a slim concealed drawer for office essentials.





MARTIN  
FURNITURE

Martin Furniture, 2345 Britannia Blvd., San Diego, CA 92154  
(619) 671-5100 / [www.martinfurniture.com](http://www.martinfurniture.com) / [info@martinfurniture.com](mailto:info@martinfurniture.com)