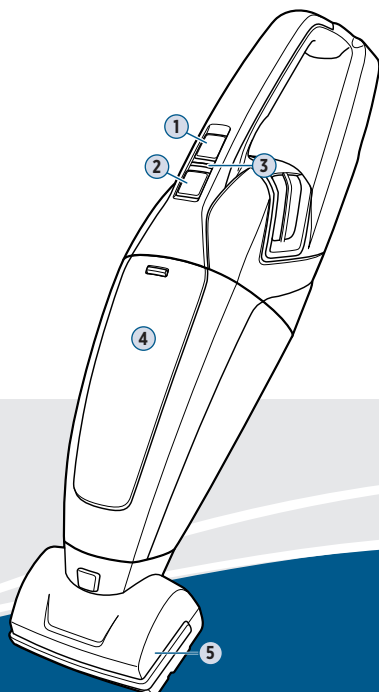




PET HAIR ERASER® LITHIUM ION HAND VACUUM 2390 SERIES

| | |
|---|---|
| Important Safety Instructions..... | 2 |
| What's in the Box? | 3 |
| Charging the Battery..... | 3 |
| LED Display Status..... | 3 |
| Using Your Vacuum..... | 4 |
| Emptying the Dirt Tank & Replacing the Filter..... | 5 |
| Maintaining the Brush Roll..... | 6 |
| Troubleshooting..... | 7 |
| Warranty..... | 7 |



Product Overview

1. Power Button
2. Dirt Tank Release Button
3. Charging Light
4. Dirt Tank
5. Motorized Brush



Meet your new BISSELL product!

Go to support.BISSELL.com for a comprehensive walkthrough of your new purchase, including videos, tips, support, and more. Want to get started right away? This guide has all the information you need to set up your new product. Let's take a look...

IMPORTANT SAFETY INSTRUCTIONS



READ ALL INSTRUCTIONS BEFORE USING YOUR APPLIANCE.

When using an electrical appliance, basic precautions should be observed, including the following:

⚠️ ⚡ ⚠️ WARNING

TO REDUCE THE RISK OF FIRE, ELECTRIC SHOCK OR INJURY:

- Do not use outdoors or on wet surfaces.
- Do not allow to be used as a toy. Close attention is necessary when used by or near children.
- Do not use for any purpose other than described in this user guide. Use only manufacturer's recommended attachments.
- Do not use with damaged cord or plug. If appliance is not working as it should, has been dropped, damaged, left outdoors, or dropped into water, have it repaired at an authorized service center.
- Do not put any object into openings. Do not use with any opening blocked; keep openings free of dust, lint, hair, and anything that may reduce air flow.
- Keep hair, loose clothing, fingers, and all parts of body away from openings and moving parts.
- Do not handle charger, including charger plug and charger terminal with wet hands.
- Do not charge the unit outdoors.
- Do not incinerate the appliance even if it severely damaged. The batteries can explode in a fire.
- Use extra care when cleaning stairs.
- Do not use to pick up flammable or combustible materials (lighter fluid, gasoline, kerosene, etc.) or use in areas where they may be present.
- Do not use vacuum cleaner in an enclosed space filled with vapors given off by oil-based paint, paint thinner, some moth-proofing substances, flammable dust, or other explosive or toxic vapors.
- Do not use to pick up toxic material (chlorine bleach, ammonia, drain cleaner, etc.).
- Do not pick up anything that is burning or smoking, such as cigarettes, matches or hot ashes.
- Do not use without dust cup or filters in place.
- Do not pick up hard or sharp objects such as glass, nails, screws, coins, etc.
- Always turn off this appliance before connecting or disconnecting the motorized nozzle.
- Do not pull or carry charger by the cord, use cord as a handle, close a door on cord, or pull cord around sharp edges or corners. Do not run appliance over cord.

- Prevent unintentional starting. Ensure the switch is in the OFF position before picking up or carrying the appliance. Carrying the appliance with your finger on the switch or energizing appliance that have the switch on invites accidents.
- Under abusive conditions, liquid may be ejected from the battery; avoid contact. If contact accidentally occurs, flush with water. If liquid contacts eyes, additionally seek medical help. Liquid ejected from the battery may cause irritation or burns.
- Do not use appliance that is damaged or modified. Damaged or modified batteries may exhibit unpredictable behavior resulting in fire, explosion or risk of injury.
- Do not expose appliance to fire or excessive temperature. Exposure to fire or temperature above 130°C/265°F may cause explosion.
- Follow all charging instructions and do not charge the appliance outside of the temperature range specified in the instructions. Charging improperly or at temperatures outside of the specified range may damage the battery and increase the risk of fire.
- Have servicing performed by a qualified repair person using only identical replacement parts. This will ensure that the safety of the product is maintained.
- Do not modify or attempt to repair the appliance except as indicated in the instructions for use and care.
- Keep the temperature range of between 40-104°F when charging battery, storing unit or during use.
- Use only with E-TEK charger, Model ZD5FZ30030US.
- Recharge only with the charger specified by the manufacturer. A charger that is suitable for one type of battery pack may create a risk of fire when used with another battery pack.
- Plastic film can be dangerous. To avoid danger of suffocation, keep away from children.
- Do not plug in your vacuum UNTIL you are familiar with all instructions and operating procedures.
- To reduce the risk of electrical shock, turn power switch OFF and disconnect plug from electrical outlet BEFORE performing maintenance or troubleshooting checks.

SAVE THESE INSTRUCTIONS

THIS MODEL IS FOR HOUSEHOLD USE ONLY.

COMMERCIAL USE OF THIS UNIT voids THE MANUFACTURER'S WARRANTY.


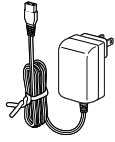
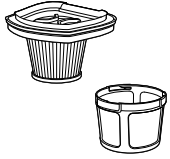
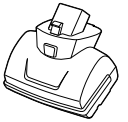
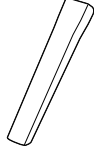

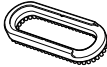
⚠️ WARNING

This product contains Lithium-Ion rechargeable batteries. DO NOT mix Lithium-Ion batteries with general household waste. According to Federal and State regulations, removal and proper disposal of Lithium-Ion batteries is required. For specific battery disposal instructions please contact Call2Recycle at 877-723-1297 or visit www.call2recycle.org. For full instructions on battery removal for recycling visit support.BISSELL.com.



What's in the Box?

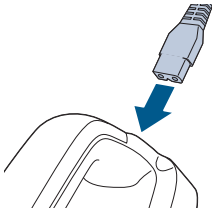
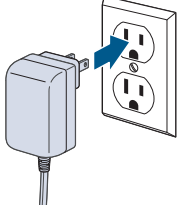
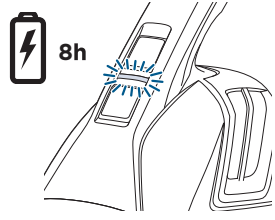
Standard accessories may vary by model. To identify what should be included with your purchase, please refer to the "Carton Contents" list located on the carton top flap.

| | | | |
|---|---|---|---|
|  |  |  |  |
| Hand Vacuum | Charging Adapter Plug | Filter | Motorized Brush |
|  |  |  | |
| Crevice Tool | Upholstery Tool | 2-in-1 Dusting Brush (select models) | |

Charging the Battery

⚡ If you need additional help charging your battery, head to support.BISSELL.com.

IMPORTANT: Turn power OFF prior to charging. Failing to do so may result in battery not fully charging

| | | |
|--|--|---|
|  |  |  |
| 1. Insert charging adapter plug into charging port on back of machine. | 2. Plug adapter into suitable outlet. | 3. Power LED lights illuminate. Charge machine for eight hours before first use. |

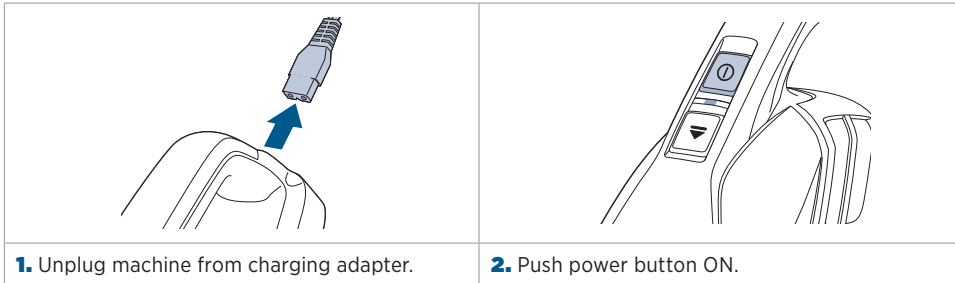
Note: It is normal for adapter to become warm during charging.

LED Display Status

| Battery Status | Light Status |
|----------------|---|
| IN USE | |
| In Use | Solid green light |
| Low Power | Blinking red light (.5 seconds) |
| No Power | Solid red light (3 seconds) |
| Brush Stall | Solid red light, then machine turns off |

| Battery Status | Light Status |
|-----------------------|---|
| CHARGING | |
| Charging | Solid red light |
| Fully Charged | Green light (on 10 minutes, then blinks every 1 minute) |
| Charger/Battery Error | Red and green blinking light, contact Consumer Care |
| Battery/Motor Issue | Red and green blinking light, contact Consumer Care |

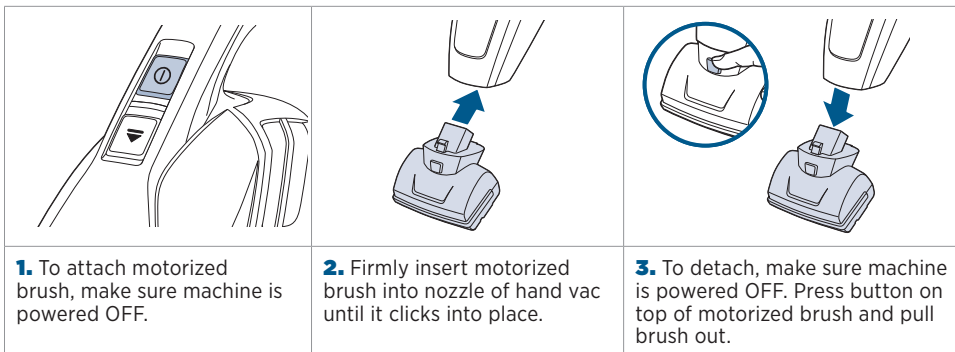
Using Your Vacuum



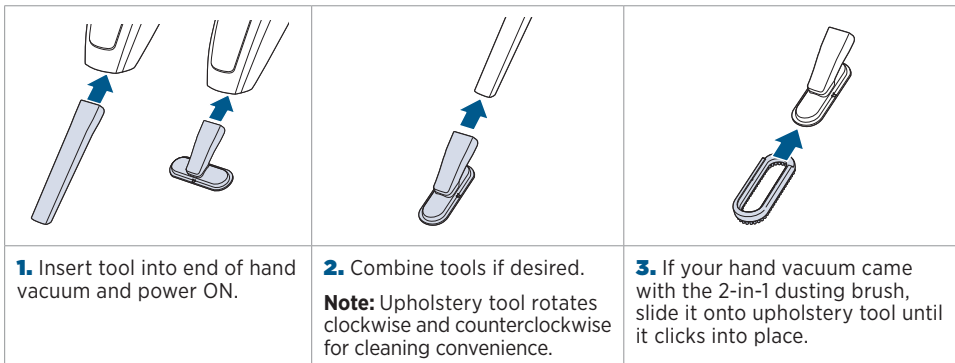
Note: The LED light will shine GREEN while in use. When the battery level gets low, the LED light will blink RED. When the battery is fully discharged, the LED light will shut off completely.

Using the Motorized Brush

The motorized brush can be used to vacuum stairs, upholstery and other hard-to-reach areas.



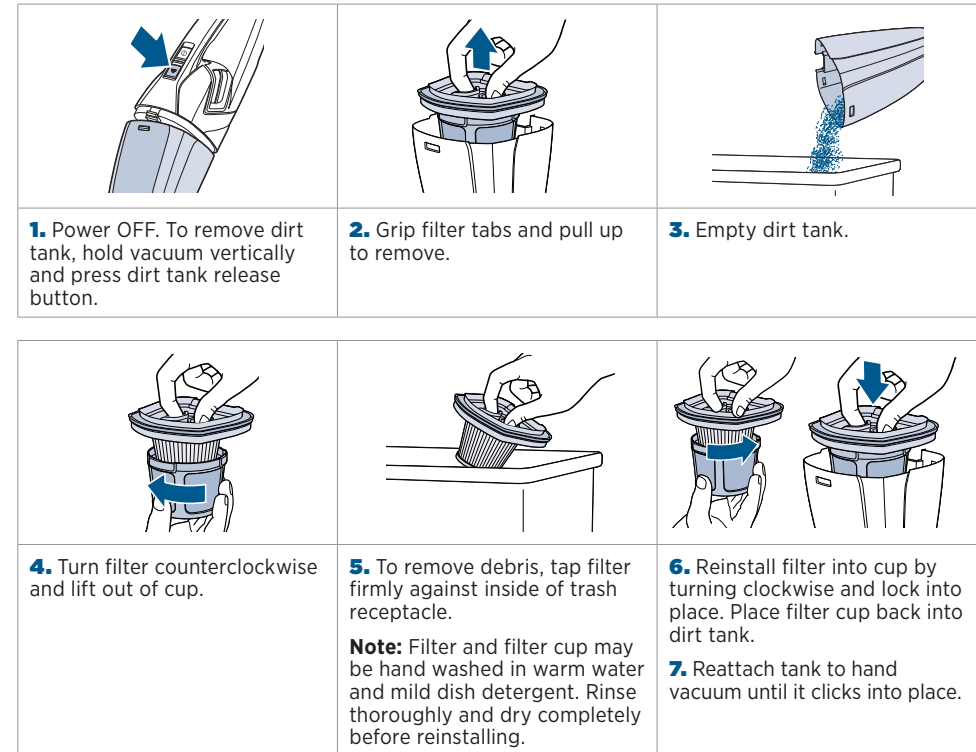
Using the Tools



Emptying the Dirt Tank & Replacing the Filter

For additional support videos and information, visit support.BISSELL.com.

The dirt tank should be emptied before debris reached FULL line.



⚠ WARNING

- To reduce the risk of electric shock, turn power switch OFF and disconnect plug from electrical outlet before performing maintenance or troubleshooting checks.
- Do not operate vacuum with damp or wet filters, as well as without filters or the dirt tank in place. Allow components to dry before reassembling the dirt tank.

Maintaining the Brush Roll

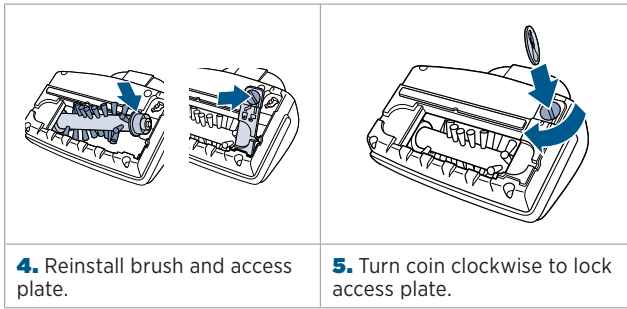
For additional support videos and information, visit support.BISSELL.com.



1. Turn vacuum OFF and remove motorized brush. See page 4.

2. Turn coin counterclockwise to unlock access plate.

3. Remove access plate. Lift brush roll out to remove. Clean out bristles and sides of brush roll.



4. Reinstall brush and access plate.

5. Turn coin clockwise to lock access plate.

Troubleshooting

Below are some of the issues you may run into. If you don't see the issue you're experiencing below, visit support.BISSELL.com.

| Problem | Possible Cause | Remedies |
|-----------------------------------|---|---|
| Hand vacuum won't turn ON | Battery is fully discharged. | Charge battery. Follow charging battery instructions on page 5. |
| Low suction | Dirt tank is full. | Empty dirt tank. |
| | Dirt tank is not installed properly. | Position dirt tank correctly and snap firmly into place. |
| | Filters need cleaning. | Follow filter instructions on page 5. |
| | Filters need replacing. | Visit BISSELL.com to order replacement filters. |
| | Battery needs charging. | Charge battery. Follow battery charging instructions on page 3. |
| Visible dirt escaping from vacuum | Clog in tool. | Remove tool from vacuum. Clear debris from both ends of tool. |
| | Dirt tank is full. | Empty dirt tank. |
| Vacuum won't charge | Filter is missing or installed incorrectly. | Check filter for correct installation. |
| | Machine is in the ON position. | Set hand vacuum in OFF position. |
| | Not the correct charger. | Use only charger that comes with machine. Correct charger model # is listed on white warning label on hand vac. |

Note: Any other servicing should be performed by an authorized service representative.

Warranty

Limited 1-year warranty, may vary by state. Visit support.BISSELL.com or call 1-800-237-7691 for complete warranty information.

NOTICE Disconnecting the battery will destroy the appliance and invalidate the warranty.

⚠ WARNING To reduce the risk of electrical shock, turn power switch OFF and disconnect polarized plug from electrical outlet BEFORE performing maintenance or troubleshooting checks.

⚠ WARNING To reduce the risk of electrical shock, turn power switch OFF and disconnect polarized plug from electrical outlet BEFORE performing maintenance or troubleshooting checks.



We're Waggin' Our Tails!

BISSELL proudly supports BISSELL Pet Foundation® and its mission to help save homeless pets. When you buy a BISSELL® product, you help save pets, too. We're proud to design products that help make pet messes, odors and pet homelessness disappear.

Visit [BISSELLsavespets.com](https://www.bissellsavespets.com) to learn more.

But wait, there's more!

Join us online for a complete guide to your new product, including troubleshooting, product registration, parts, and more.

Go to [support.BISSELL.com](https://support.bissell.com).



REGISTER



INFO



VIDEOS



PARTS



SUPPORT



©2023 BISSELL, Inc. All rights reserved.
Part Number 1638994 06/23