




# AXE5400 Tri-Band Wi-Fi 6E Router

Faster. Broader. Unstoppable.




Archer AXE5400

 Ultra-Fast Wi-Fi  
up to 5400 Mbps†

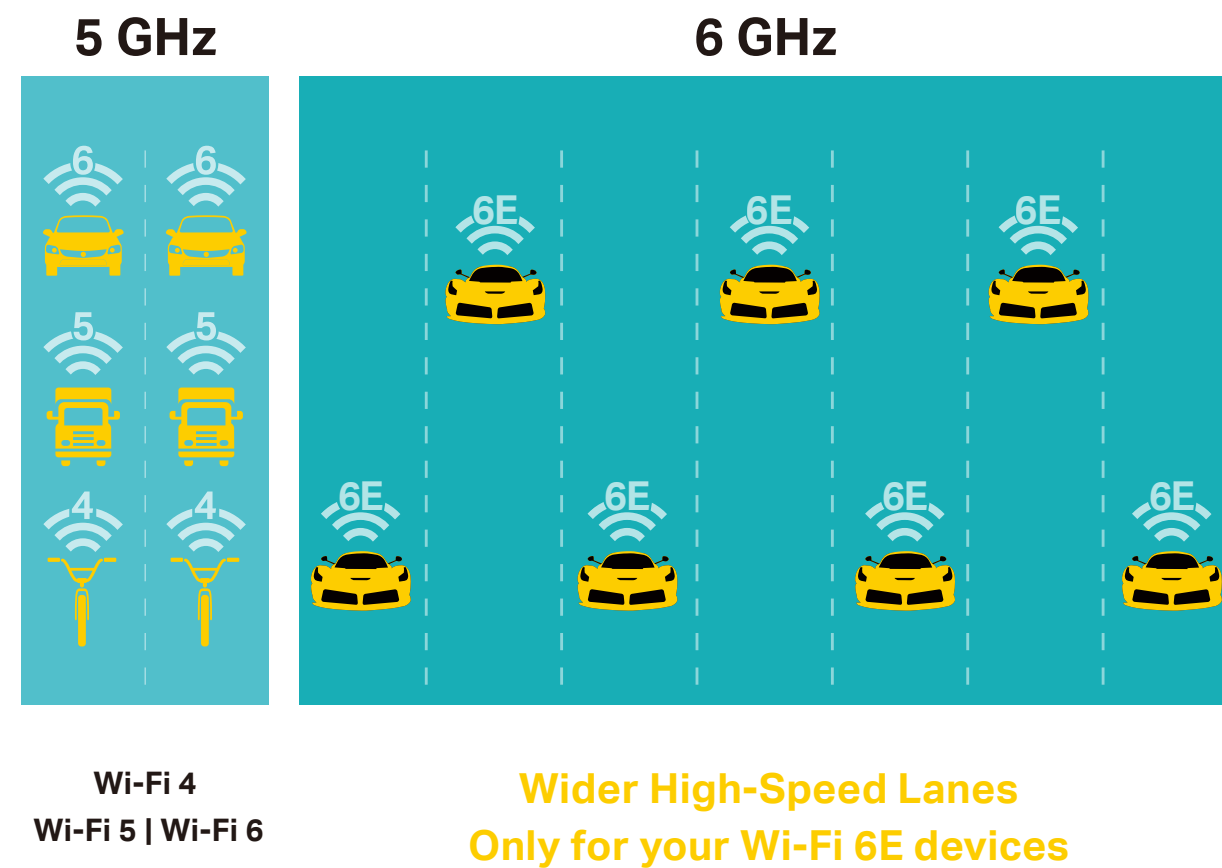
 Extensive Coverage  
6 High-Performance Antennas

 Works with All  
Wi-Fi Devices†

 Works with All  
Internet Providers\*

# Highlights

## Wi-Fi 6E<sup>+</sup> Huge Leap Forward for Wi-Fi



### Robust High-Speed Connections

Connect to an even faster Wi-Fi. The brand-new 6 GHz band is wide enough for 7 extra 160 MHz channels, preventing competition over bandwidth and drops in speed.†

### Clean and Congestion-Free

The 6 GHz band is exclusive to Wi-Fi 6E devices, which prevents interference from legacy devices. Unleash the most out of the latest Wi-Fi and enjoy congestion-free networking.

## TP-Link HomeShield

TP-Link's premium security services keep your home network safe with cutting-edge features for network and IoT protection.\*



### Network Protection

Detect cyber threats to keep your privacy and connected devices well protected.



### Quality of Service (QoS)

Prioritize your bandwidth needs to get a better networking experience.



### Parental Controls

Manage online time and block inappropriate content to maintain healthy online habits.



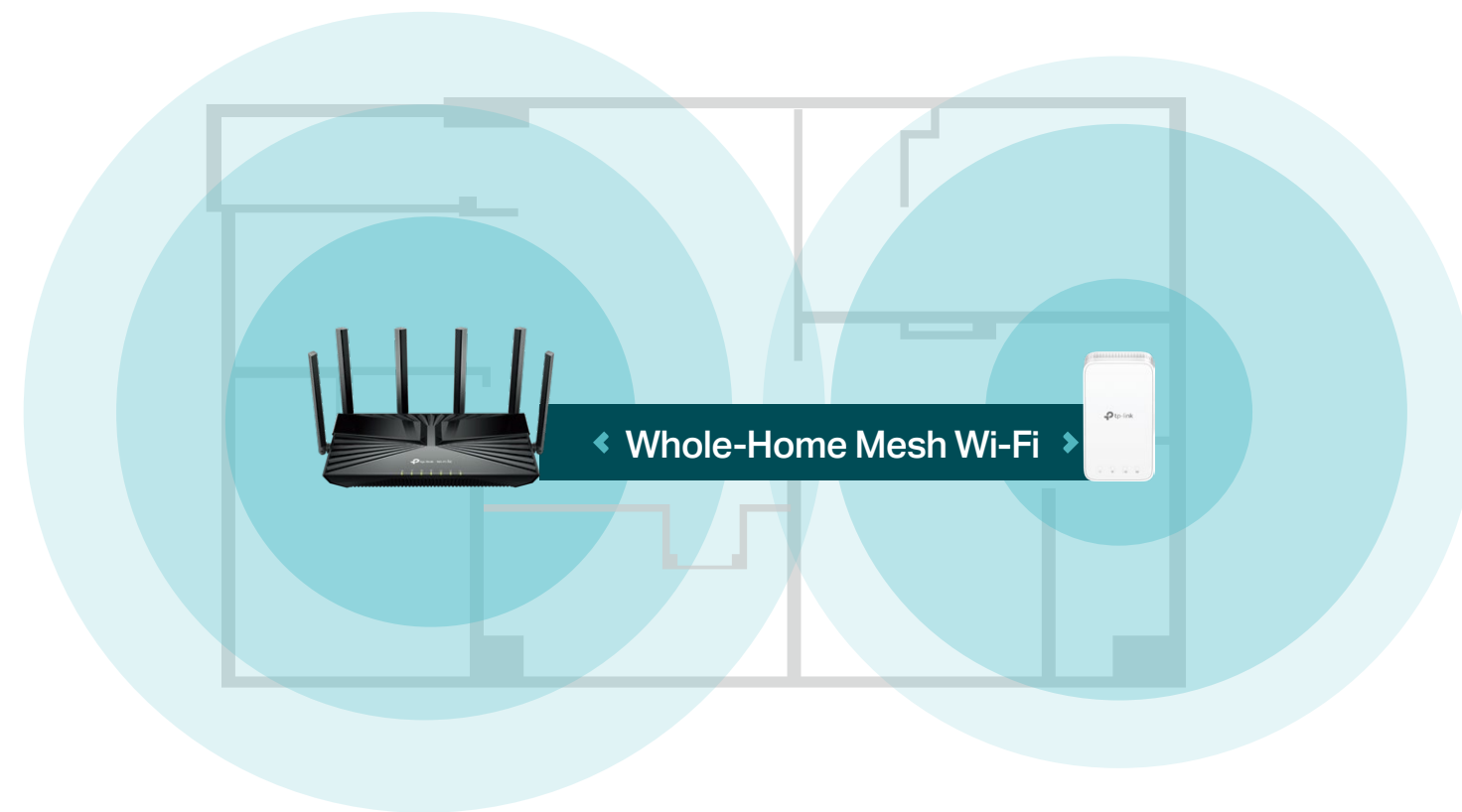
### Comprehensive Reports

Gain full statistics and insights to help you understand your home network better.

# Highlights

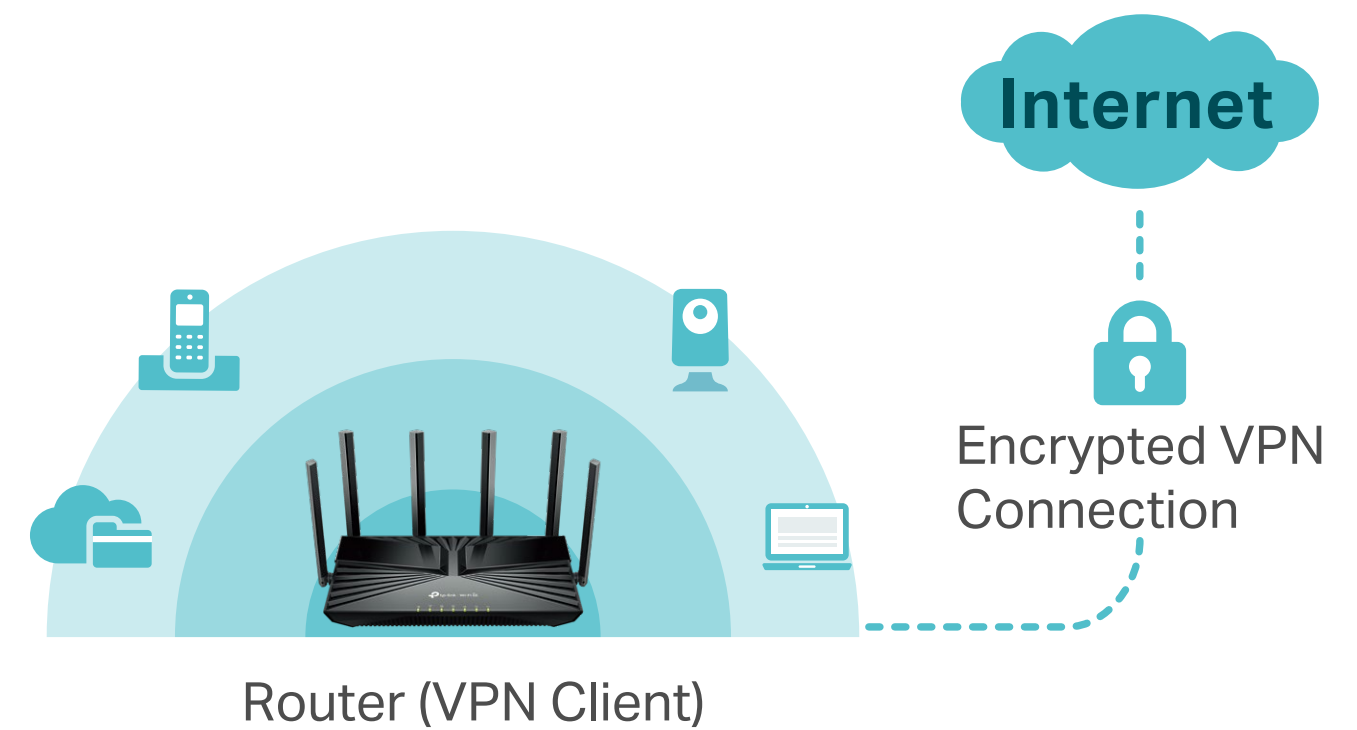
## Flexible Whole-Home Wi-Fi

OneMesh™ is a simple way to form a Mesh network with a single Wi-Fi name for seamless whole-home coverage. Connect a OneMesh™ range extender to Archer AXE5400 and never waste time searching for a stable connection again.



## VPN Client Support

With VPN client support, AXE5400 allows specified devices in your home network to access remote VPN servers without needing to install VPN software on every device. AXE5400 can also run both the VPN and ordinary internet connections at the same time, delivering security and flexibility.



# Highlights

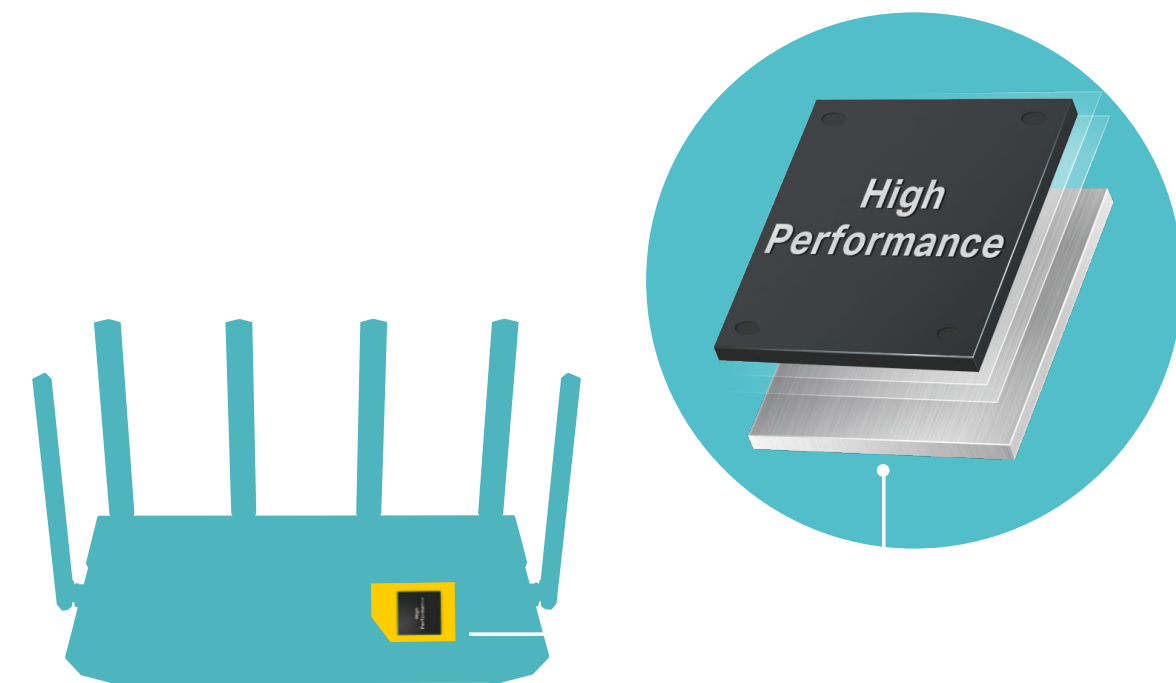
## WPA3 Security

The latest Wi-Fi security protocol, WPA3, brings new capabilities to improve cybersecurity. More secure encryption in Wi-Fi password safety and enhanced protection against brute-force attacks combine to safeguard your home Wi-Fi.\*\*



## Powerful Processing

A powerful CPU processes multiple complex tasks and demanding applications with ease. Its processing power minimizes internal latency to keep your connections fast and uninterrupted.

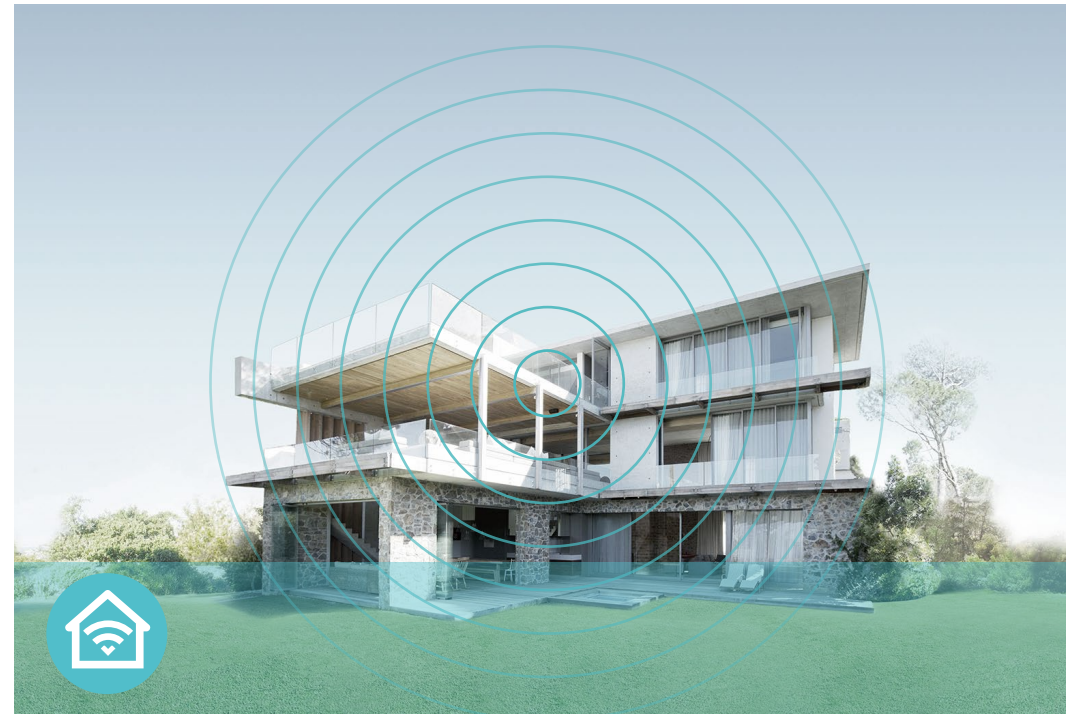


# Features



## Speed

- AXE5400 Wi-Fi – 5.4 Gbps tri-band Wi-Fi 6E enables gaming, streaming and high-speed downloading on multiple devices—all at the same time†
- Greenfield 6 GHz Band – Provides robust high-speed connections with a brand-new expansive and congestion-free band.
- Tri-Band Capacity – Provides additional spectrum to connect more wireless clients and minimize congestion.
- Connect More, Stay Fast – Supports OFDMA to reduce congestion and quadruple your average throughput†



## Wi-Fi Range

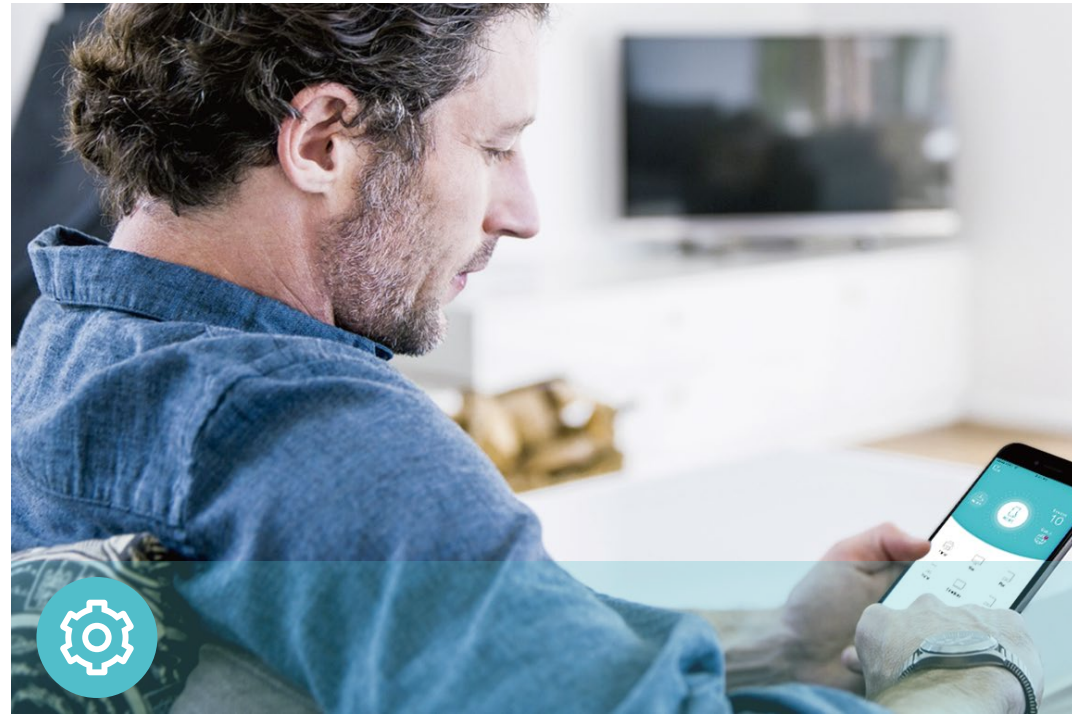
- Ultimate Range Wi-Fi – Six high-gain external antennas deliver a Wi-Fi signal to every corner of your home, making all of your connections more efficient and stable
- Beamforming Technology – Concentrates Wi-Fi signals towards individual devices to ensure stronger connections
- Seamless OneMesh network – Transfer between signals without any drops or lag and manage your whole network using a centralized panel



## Reliability

- Secure VPN Access – Connects to a private network with a safe and secure OpenVPN, PPTP VPN, and L2TP VPN connection and provides VPN access to devices in your network with VPN Client
- Airtime Fairness – Balances bandwidth of connected devices to improve overall throughput and efficiency
- Smart Connect – Intelligently switches each device's connection to the optimum available Wi-Fi band

# Features



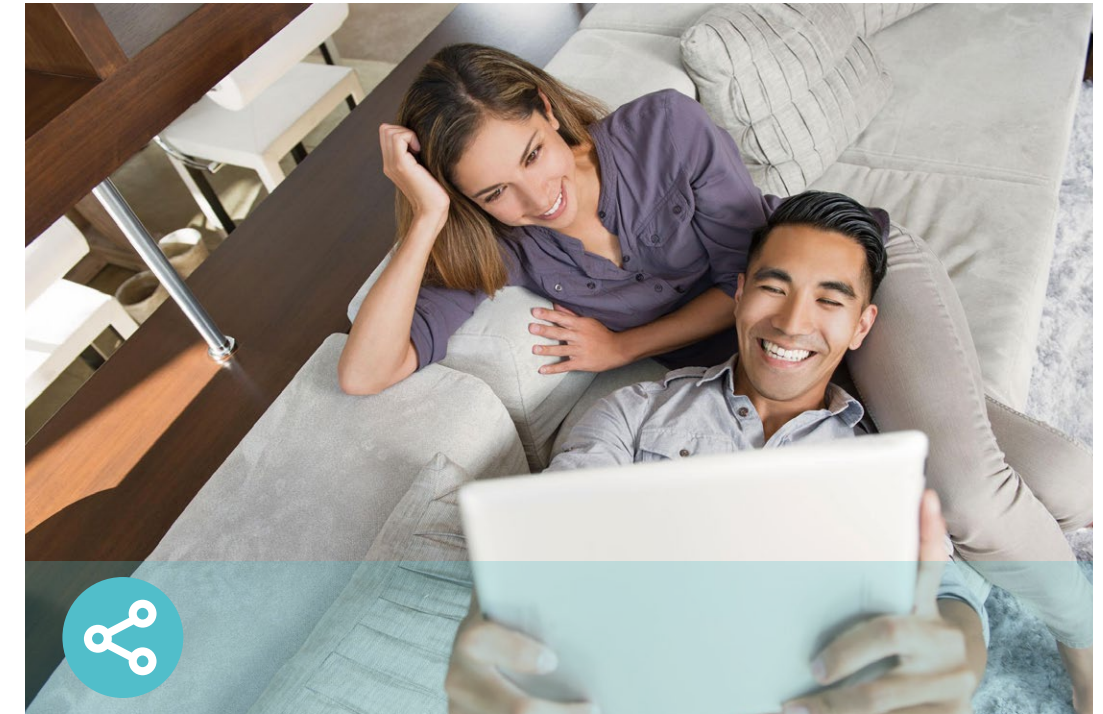
## Ease of Use

- Intuitive Web UI – Ensures quick and simple installation without hassle
- WPS (Wi-Fi Protected Setup) – Help you to quickly and securely connect your devices to the router's network with a tap
- Power On/Off – Conveniently power on or off your router as required
- Hassle-free Management with Tether App – Network management is made easy with the TP-Link Tether app, available on any Android and iOS device



## Security

- HomeShield – TP-Link's premium security services keep your home network safe with cutting-edge features for network and IoT protection
- Guest Network – Provides separate access for guests to secure the home network
- Access Control – Establishes a whitelist or blacklist to allow or restrict certain devices to access the internet
- Encryptions for Secure Network – WPA/WPA2-Personal, WPA2/WPA3-Personal, WPA/WPA2-Enterprise encryptions provide active protection against security threats



## Easy Sharing

- USB Port – Connects external storage devices to rapidly share files, photos, and videos
- Built-in Media Server – Allows you to play music, watch videos and view photos from any device on your network

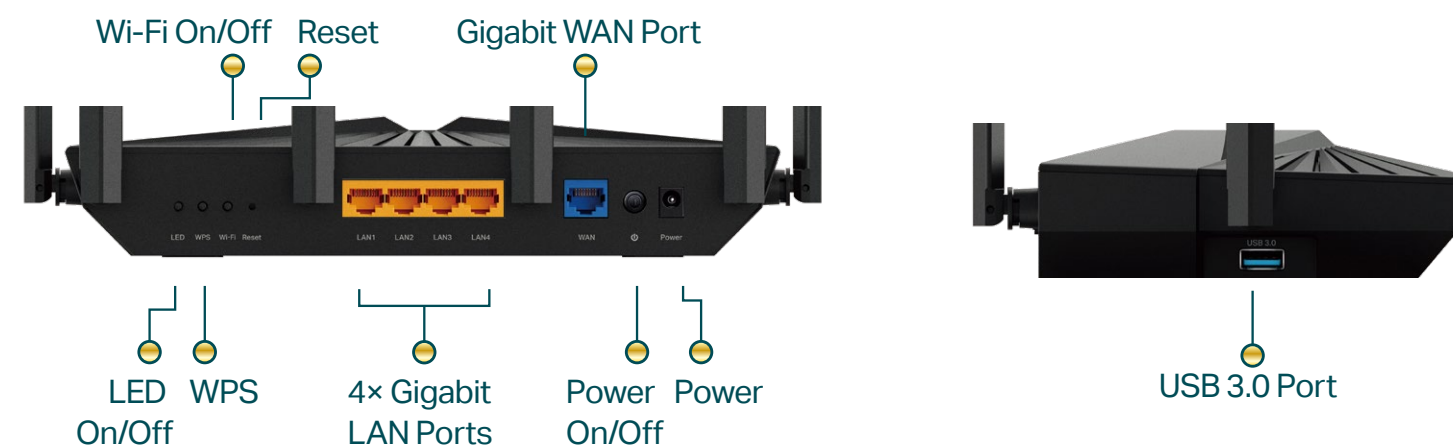
# Specifications

## Wireless

- Standards: IEEE 802.11ax 6 GHz, IEEE 802.11ax/ac/n/a 5 GHz, IEEE 802.11ax/n/g/b 2.4 GHz
- WiFi Speeds: 2402 Mbps (6 GHz) + 2402 Mbps (5 GHz) + 574 Mbps (2.4 GHz)<sup>†</sup>
- WiFi Range: 6× Fixed High-Performance Antennas, Beamforming
- WiFi Capacity: Tri-Band, OFDMA, Airtime Fairness, DFS, 6 Streams
- Working Modes: Router Mode, Access Point Mode

## Hardware

- Processor: 1.7 GHz Quad-Core CPU
- Ethernet Ports: 1× Gigabit WAN Port, 4× Gigabit LAN Ports
- USB Support: 1× USB 3.0 Port
- Buttons: LED On/Off Button, WPS Button, Wi-Fi On/Off Button, Reset Button, Power On/Off Button



## Security

- WiFi Encryption: WPA, WPA2, WPA3, WPA/WPA2-Enterprise (802.1x)
- Network Security: SPI Firewall, Access Control, IP & MAC Binding, Application Layer Gateway, HomeShield Security
- Guest Network:
  - 1× 6 GHz Guest Network, 1× 5 GHz Guest Network, 1× 2.4 GHz Guest Network
- VPN Server: OpenVPN, PPTP, L2TP VPN Server
- VPN Client: OpenVPN, PPTP, L2TP VPN Client

## Software

- Protocols: IPv4, IPv6
- Service Kits: HomeShield
- OneMesh: Supported
- Parental Controls: HomeShield Parental Controls
- WAN Types: Dynamic IP, Static IP, PPPoE, PPTP, L2TP
- Quality of Service: QoS by Device
- Cloud Service: Auto Firmware Upgrade, TP-Link ID, DDNS
- NAT Forwarding: Port Forwarding, Port Triggering, DMZ, UPnP
- DDNS: TP-Link, NO-IP, DynDNS

# Specifications

## Physical

- Dimensions (W×D×H): 10.3 × 5.6 × 2.0 in (262 × 143.5 × 51.5 mm)
- Package Contents:
  - Wi-Fi Router Archer AXE5400
  - Power Adapter
  - RJ45 Ethernet Cable
  - Quick Installation Guide

## Other

- System Requirements:
  - Internet Explorer 11+, Firefox 12.0+, Chrome 20.0+, Safari 4.0+, or other JavaScript-enabled browser
  - Cable or DSL Modem (if needed)
  - Subscription with an internet service provider (for internet access)
- Certifications: FCC, RoHS
- Environment:
  - Operating Temperature: 0°C~40°C (32°F ~104°F)
  - Operating Humidity: 10%~90% non-condensing



For more information, please visit

<http://www.tp-link.com/products/details/Archer-AXE5400.html>

or scan the QR code left

\*Maximum wireless signal rates are the physical rates derived from IEEE Standard 802.11 specifications. Actual wireless data throughput and wireless coverage are not guaranteed and will vary as a result of network conditions, client limitations, and environmental factors, including building materials, obstacles, volume and density of traffic, and client location. Use of Wi-Fi 6 (802.11ax), Wi-Fi 6E, and features including OFDMA, 1024-QAM, and HE160 require clients to also support the corresponding features. Seven 160MHz channels may not be all available in the 6 GHz band in some regions/countries due to regulatory restrictions.

†All devices need to support 802.11 Wi-Fi protocols. In order to have a Wi-Fi 6E connection on 6 GHz, you may require a client supporting Wi-Fi 6E.

\*HomeShield includes the Free Basic Plan. Fees apply for the Pro Plan. Visit [tp-link.com/homeshield](http://tp-link.com/homeshield) for more information

\*A separate modem or gateway may be required. PPPoE, Static IP, and Dynamic IP are supported. PPTP and L2TP may also be supported under certain configurations.

\*\*Use of MU-MIMO and/or WPA3 requires clients to also support the corresponding features.

\*\*\*This router may not support all the mandatory features as ratified in Draft 3.0 of the IEEE 802.11AX specification.

©2023 TP-Link

## Test Data

- WiFi Transmission Power:
  - FCC: ≤29dBm (2.4 GHz), ≤28dBm (5 GHz), ≤22dBm (6 GHz)
- WiFi Reception Sensitivity:
  - 2.4 GHz:
    - 11ax HE20 MCS0:-95dBm, 11ax HE20 MCS11:-64dBm
    - 11ax HE40 MCS0:-92dBm, 11ax HE40 MCS11:-62dBm
  - 5 GHz:
    - 11ax HE20 MCS0:-94dBm, 11ax HE20 MCS11:-63dBm
    - 11ax HE40 MCS0:-91dBm, 11ax HE40 MCS11:-60dBm
    - 11ax HE80 MCS0:-88dBm, 11ax HE80 MCS11:-57dBm
    - 11ax HE160 MCS0:-85dBm, 11ax HE160 MCS11:-54dBm
  - 6 GHz:
    - 11ax HE20 MCS0:-93dBm, 11ax HE20 MCS11:-62dBm
    - 11ax HE40 MCS0:-90dBm, 11ax HE40 MCS11:-59dBm
    - 11ax HE80 MCS0:-87dBm, 11ax HE80 MCS11:-56dBm
    - 11ax HE160 MCS0:-84dBm, 11ax HE160 MCS11:-53dBm