

Terramor offers a realistic interpretation of natural stone that combines a genuine textural finish and a timeless color palette all in a low-maintenance porcelain body. This large format series creates a classic yet modern aesthetic especially when pairing the decorative groove and the flat tiles together in an interior setting. Available in four distinct sizes with a honed or matte finish.

# TERRAMOR™

*Glazed Porcelain*





Bianco



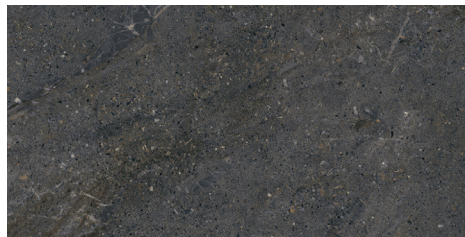
Avorio



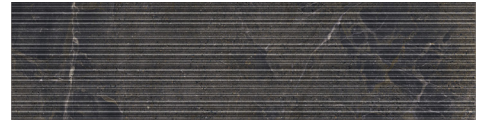
Fulvo



Grigio



Nero



Nero Groove

All Colors Available in Groove Pattern



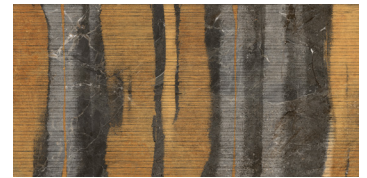
Fuse Bianco (24"x47" Only)



Fuse Calda (24"x47" Only)

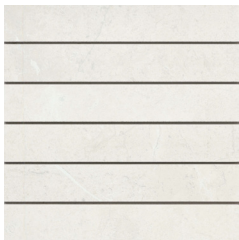


Fuse Grigio (24"x47" Only)



Fuse Nero (24"x47" Only)

Mosaics



Bianco



Avorio



Fulvo



Grigio



Nero

Category	47" x 47"	24" x 47"	12" x 24"	12" x 47" Groove (Wall)	2" x 12" Mesh	3" x 12" Floor SBN	
<b>Sizes</b>	47" x 47" 47.24" x 47.24"	24" x 47" 23.62" x 47.24"	12" x 24" 11.81" x 23.62"	12" x 47" Groove (Wall) 11.81" x 47.24"	2" x 12" 12" x 12" Mesh	3" x 12" Floor SBN	
<b>Thickness</b>	9mm	9mm	9mm	9mm	9mm	Check Website	
<b>Faces</b>	6	12	48	15	N/A	N/A	
<b>Finish</b>	Honed	Honed	Honed	Matte	Honed	Honed	
<b>Edge</b>	Rectified	Rectified	Rectified	Rectified	Cut	Cut/Rounded	
<b>Grout Joint Recommendation</b>	1/8"	1/8"	1/8"	3/16"	1/8"	1/8"	
<b>Testing</b>	Abrasion Resistance C1027	Breaking Strength C648	Chemical Resistance C650	Water Absorption C373	DCOF ANSI A1371	Scratch Hardness MOHS	Shade Variation Rating
<b>Results*</b>	III	>350 lbf >250 lbf (12x47)	Resistant	<0.5%	>0.50	7 5 (12x47)	V2

**Product and Installation Details | ANSI A108.02**  
Section 4.3.8.2 - For running bond/brick jointing patterns utilizing tiles (square or rectangular) where the side being offset is greater than 18" (nominal dimension), the running bond offset will be a maximum of 33% unless otherwise specified by the tile manufacturer. If an offset greater than 33% is specified, specifier and owner must approve mock-up and lippage.



Sustainability Attributes

- Red List Free
- Health Product Declaration (HPD) provided upon request
- Product Packaging is 100% recyclable
- VOC Free

\*For more information visit [www.emser.com](http://www.emser.com). Always consult a professional for proper usage and installation.