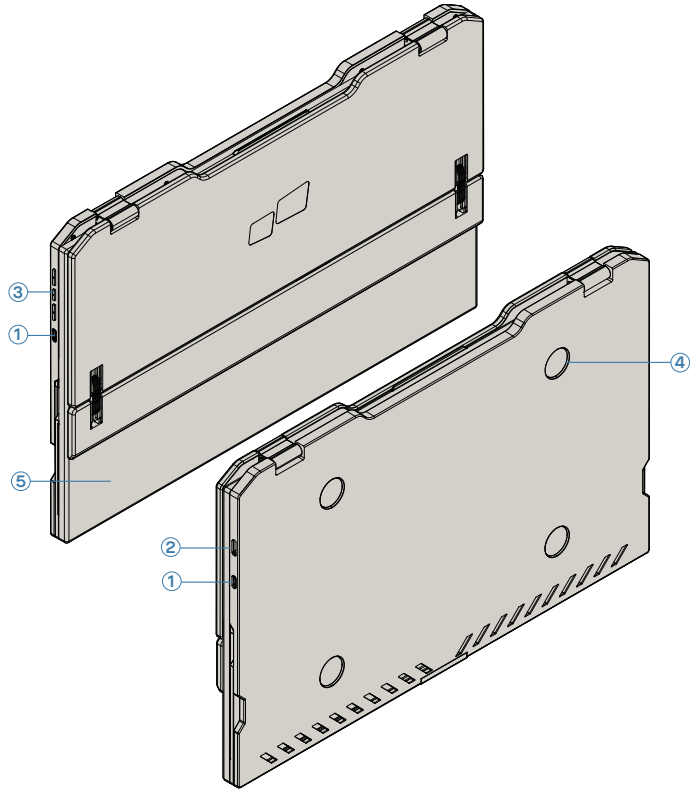


1.1 Monitor & accessories

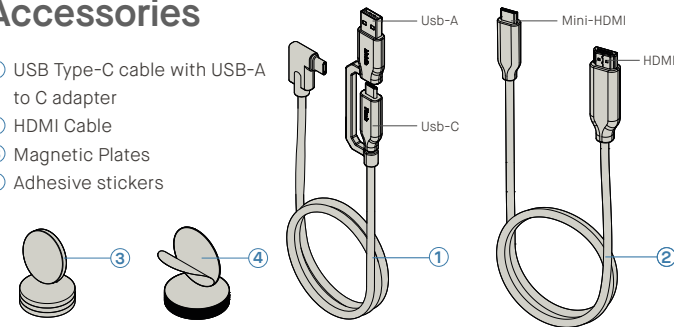


- ① Usb Type-C Port
- ② Mini HDMI Port
- ③ Menu Buttons
- ④ Magnetic Plates
- ⑤ Screen

Duex Float

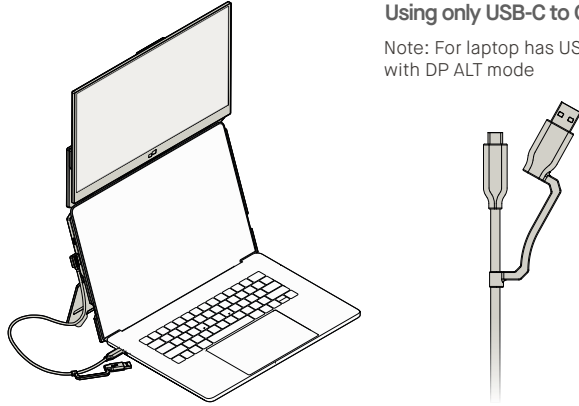
Accessories

- ① USB Type-C cable with USB-A to C adapter
- ② HDMI Cable
- ③ Magnetic Plates
- ④ Adhesive stickers



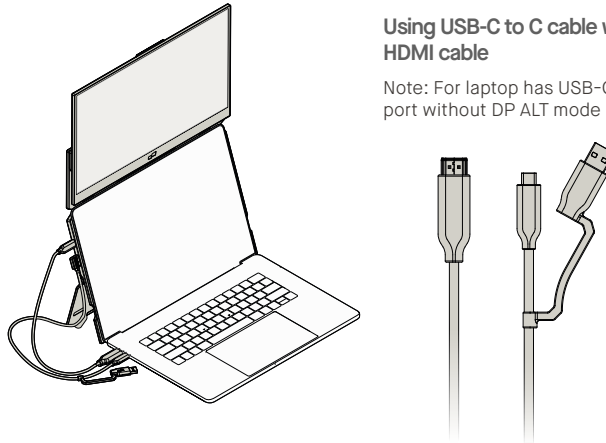
Using only USB-C to C cable

Note: For laptop has USB-C port with DP ALT mode



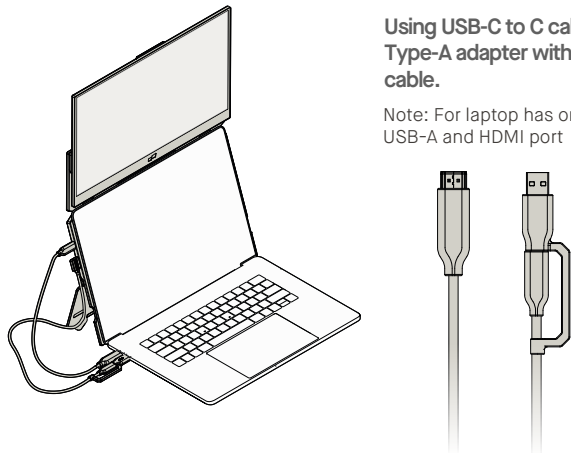
Using USB-C to C cable with HDMI cable

Note: For laptop has USB-C port without DP ALT mode



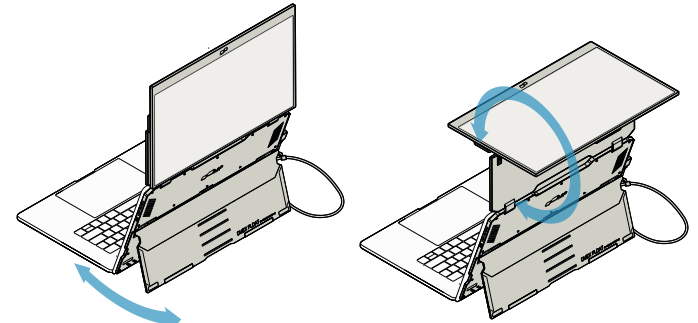
Using USB-C to C cable and Type-A adapter with HDMI cable.

Note: For laptop has only USB-A and HDMI port



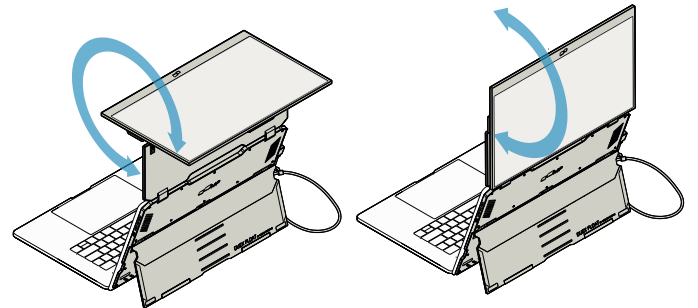
3.1 Attachment mode

Attachment mode is optional. Please refer to attachment guide and mounting template.



1. Deploy the kickstand and rotate the monitor.
2. Rotate the monitor 180° to face the laptop monitor.

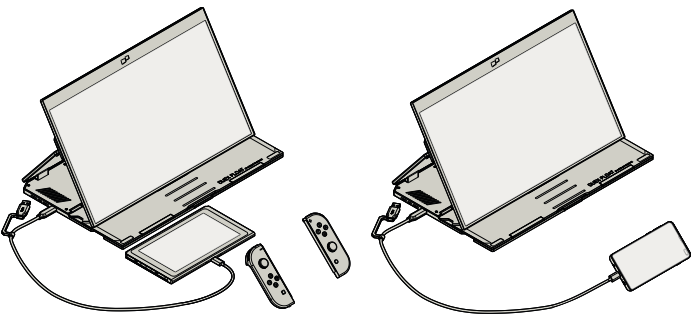
3.2 Presentation mode



1. Rotate the monitor 180° degrees.
2. Connect Duex Float to the Pc and use it in presentation mode.

3.3 Nintendo Switch & Android mode.

First connect the original power cable of your switch/android device to Duex Float, then connect Switch/Android device to Duex Float.



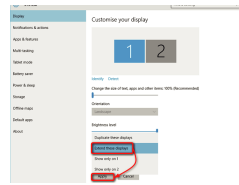
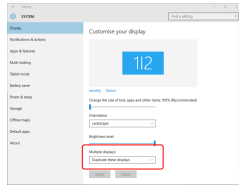
4 Display Settings

4.1 Duplicate Mode to Extend Mode for Windows

-Right click on your desktop while Duex Float is connected and choose "Display Setting"
-Then you should either see this screen or the one at next Section

-When the drop down box is opened, choose "Extend these displays"
-Then click "Apply"
-Now you are in Extend Mode

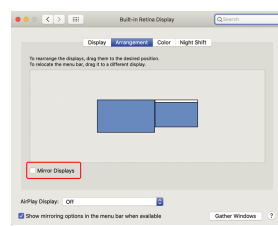
-If you have a duplicate screen and want to change it to extend mode, click on the "Duplicate these displays" from the drop down box



4.2 Duplicate Mode to Extend Mode for Mac OS

- Click on system preference and go to Displays

- Checking the "Mirror Displays" box will switch between duplicate and extend mode for Duex Float



4.3 Rotate Display and Layout set up for Windows

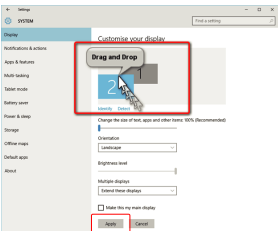
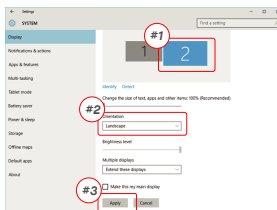
If you are already in "Extend mode" and want to use Duex Float on the left

-Now your screen is upside down and ready to be use on the left with 1 extra step.

1. First click on the 2nd screen icon
2. Then open the Orientation drop down box and change it from "Landscape" to "Landscape (flipped)": Choose "Portrait" for Portrait Mode".
3. Then click "Apply"

-Move the 2nd display icon from the right to the left of the 1st display by simply "Drag and Drop" it.

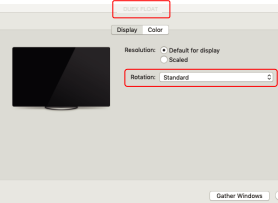
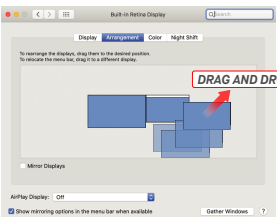
-Click "Apply" to finish the setting of the lay out.



4.4 Rotate Display and Layout set up for Mac OS

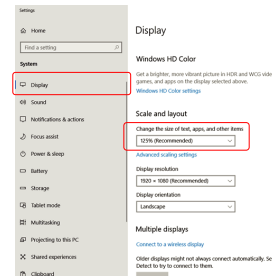
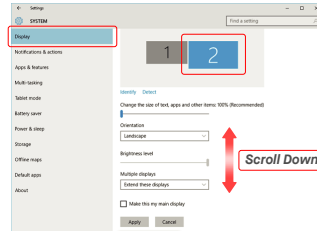
- To position the display on either left or right, simply drag and drop it to the side you want.

- To rotate the display, go to the Duex Float display window and choose the suitable "Rotation" options.



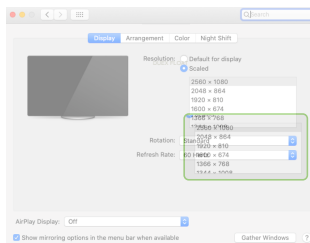
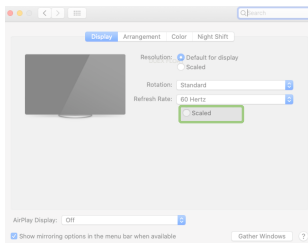
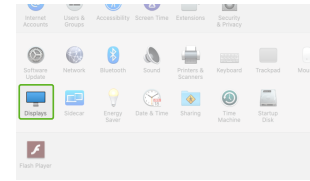
4.5 Change Display Settings to Adjust Content Size for Windows

1. To adjust content size on Duex Float monitor, first click on the number "2" monitor under Display setting.
2. Scroll down and look for "scale and layout" options
3. Default size of text is set at 125% and user can increase it up to 175% or reduce back to 100% base on user preference.



4.6 Change Display Settings to Adjust Content Size for Mac OS

1. Click System Preferences
2. Click Displays
3. Hold down "Option" key and click "Scaled"
4. Select the resolution that fits your need



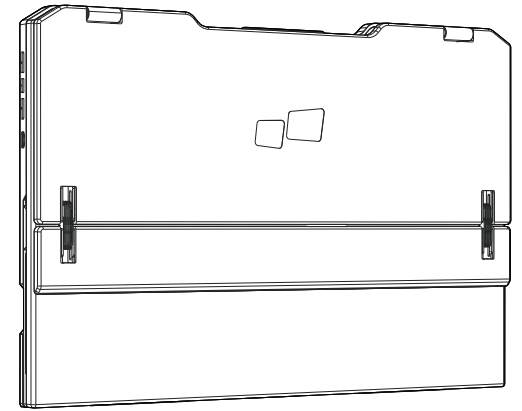
5 Technical Information

Model	DUEX FLOAT
Size	15.6 In
Weight	4 Lbs
Thickness	0.8 In
Hybrid Signals	Yes
Eye-Care Mode	yes
Auto-Rotation	Yes
Nintendo Switch	Yes
Android Phones	Yes

*Specifications are subject to change without notice.

DUEX® FLOAT

Portable Laptop Monitor



MP [User Guide](#)

Copyright © 2021 MOBILE PIXELS INC. All Rights Reserved. No part of this manual, including the products and software described in it, may be reproduced, transmitted, transcribed, stored in a retrieval system, or translated into any language in any form or by any means, except those permitted in writing by MOBILE PIXELS INC. Product warranty or service will not be extended if the product is repaired, modified or altered, unless such repair, modification or alteration is authorized in writing by MOBILE PIXELS INC. or the serial number of the product is destroyed or missing. MOBILE PIXELS INC. PROVIDES THIS MANUAL "AS IS" WITHOUT WARRANTY OF ANY KIND, EITHER EXPRESS OR IMPLIED, INCLUDING BUT NOT LIMITED TO THE IMPLIED WARRANTIES OF MERCHANTABILITY OR FITNESS FOR A PARTICULAR PURPOSE. IN NO EVENT SHALL MOBILE PIXELS INC. ITS DIRECTORS, OFFICERS, EMPLOYEES OR AGENTS BE LIABLE FOR ANY INDIRECT, SPECIAL, INCIDENTAL, OR CONSEQUENTIAL DAMAGES (INCLUDING DAMAGES FOR LOSS OF PROFITS, LOSS OF BUSINESS, LOSS OF USE OR DATA, INTERRUPTION OF BUSINESS AND THE LIKE) EVEN IF MOBILE PIXELS INC. HAS BEEN ADVISED OF THE POSSIBILITY OF SUCH DAMAGES ARISING FROM ANY DEFECT OR ERROR IN THIS MANUAL OR PRODUCT SPECIFICATIONS. NO INFORMATION CONTAINED IN THIS MANUAL ARE FURNISHED FOR INFORMATIONAL USE ONLY AND ARE SUBJECT TO CHANGE AT ANY TIME WITHOUT NOTICE, AND SHOULD NOT BE CONSTRUED AS A COMMITMENT BY MOBILE PIXELS INC. MOBILE PIXELS INC. ASSUMES NO RESPONSIBILITY OR LIABILITY FOR ANY ERRORS OR INACCURACIES THAT MAY APPEAR IN THIS MANUAL, INCLUDING THE PRODUCTS AND SOFTWARE DESCRIBED IN IT. Products and company names appearing in this manual may or may not be registered trademarks or copyrights of their respective companies, and are used only for identification or explanation and to the owners' benefit, without intent to infringe.

5.2 Safety and Handling

IMPORTANT SAFETY INFORMATION

Carefully go through the user manual and other documentation before setting up the DUEX FLOAT. If any part is broken or damaged, do not try to open DUEX FLOAT or attempt to fix it yourself, please contact the retailer, a qualified service technician or email us directly at contact@mobilepixels.us. Store DUEX FLOAT under appropriate conditions, avoid exposure to extreme heat, moisture and dust. We recommend you to place DUEX FLOAT on a stable surface and keep your DUEX FLOAT in a sleeve to protect it during transport. Never spill liquid of any kind onto the surface or into the openings of the v. Do not spray any cleaner on the screen to avoid an electric shock. If your DUEX FLOAT gets wet, unplug all cables and reconnect till the DUEX FLOAT is completely dry. Carefully unplug all cables before cleaning DUEX FLOAT. Clean with a soft, dry, lint-free cloth. To ensure satisfactory experience, use the DUEX FLOAT with recommended display size of your laptop. Please disconnect the cables when you reverse the position of DUEX FLOAT, decouple the DUEX FLOAT from the backplane of your laptop, rotate 180° About a vector normal to the backplane, and re-couple to the backplane of the laptop computer.

CHOKING HAZARD

DUEX FLOAT and accessories contain small parts that may present a choking hazard to small children, please keep them out of reach from small children.

MEDICAL DEVICE INTERFERENCE

The DUEX FLOAT contains magnets. The DUEX FLOAT also contain components and radios that emit electromagnetic fields. It may interfere with personal medical devices, e.g. pacemakers or defibrillators. Keep a safe distance between the DUEX FLOAT and your medical device. Consult a physician or medical device manufacturer for specific details of your medical device. Stop using DUEX FLOAT if the interference is observed with your personal medical devices. Items with magnetically-stored data such as credit cards and hard drives may be sensitive to magnetic or electromagnetic fields, hence should be kept at a distance from DUEX FLOAT.

FCC COMPLIANCE STATEMENT

This device complies with Part 15 of the FCC Rules. Operation is subject to the following two conditions: 1_This device may not cause harmful interference. 2_This device must accept any interference received including interference that may cause undesired operation. Note: This equipment has been tested and found to comply with the limits for a Class B digital device, pursuant to Part 15 of the FCC Rules. These limits are designed to provide reasonable protection against harmful interference in a residential installation. This equipment generates, uses, and can radiate radio frequency energy, and if not installed and used in accordance with the instructions, may cause harmful interference to radio communications. However, there is no guarantee that interference will not occur in a particular installation. If this equipment does cause harmful interference to radio or television reception, which can be determined by turning the equipment off and on, the user is encouraged to try to correct the interference by one or more of the following measures: 1_Reorient or relocate the receiving antenna. 2_Increase the separation between the equipment and receiver. 3_Connect the equipment into an outlet on a circuit different from that to which the receiver is connected. 4_Consult the dealer or an experienced radio/TV technician for help.

WARRANTY

Mobile Pixels INC warrants this product for a period of 1 year upon the original date of purchase. Product or service warranty will not be extended to any losses or damages that are due to improper installation, misuse, neglect, modification, alteration by non-authorized third party, improper environment, or other irregularities.

SUPPORT

For detailed troubleshooting information, contact: CONTACT@MOBILEPIXELS.US