

IMPORTANT PRODUCT INFORMATION

Parents: Read and explain all instructions and safety information to your child before use.



SAFETY INFORMATION

READ ALL SAFETY INFORMATION BEFORE USING THE DEVICE. FAILURE TO FOLLOW THESE SAFETY INSTRUCTIONS COULD RESULT IN FIRE, ELECTRIC SHOCK, OR OTHER INJURY OR DAMAGE.

CHOKING HAZARD - SMALL PARTS. Small parts contained in your device and its accessories may present a choking hazard to small children.

CAUTION - ELECTRICALLY OPERATED PRODUCT: Not recommended for children under 3 years of age. As with all electric products, precautions should be observed during handling and use to prevent electric shock.

The Echo Pop Kids and its included accessories are not toys. Children should be supervised to ensure proper use. Parents should also routinely check to confirm that the Echo Pop Kids shows no signs of damage and is in safe condition for use by children. The Echo Pop Kids is not suitable for children under age 3.

DO NOT GET WET. Do not expose your device or adapter to liquids. If your device or adapter gets wet, carefully unplug all cables without getting your hands wet and wait for the device and adapter to dry completely before plugging them in again.



Do not attempt to dry your device or adapter with an external heat source, such as a microwave oven or a hair dryer. If the device or adapter appear damaged, discontinue use immediately. Use only accessories supplied with the device to power your device.

POWER ADAPTER SAFETY

EXERCISE CAUTION WHEN USING THE POWER ADAPTER. The Echo Pop Kids is shipped with an adapter. Parents should not permit children to connect or handle the adapter until they are old enough to do so safely. The Echo Pop Kids should only be charged using the adapter included with the device. To reduce the risk of fire or electric shock when using the adapter, carefully follow these instructions:

- Do not force the adapter into a power outlet.
- Do not expose adapter or cable to liquids.
- If the adapter or cable appears damaged, discontinue use immediately. The adapter and cable could present a strangulation hazard. Keep out of reach of young children. Keep the device and its power adapter in a well ventilated area and away from heat sources.

Refer to the Safety & Compliance section on [amazon.com/devicesupport](https://www.amazon.com/devicesupport) for additional information.

Install your power adapter into an easily accessible socket-outlet located near the equipment that will be plugged into, or powered by, the adapter.



AVOID PROLONGED LISTENING AT HIGH VOLUME. At full power, prolonged listening of the player can damage the ear of the user. To prevent possible hearing damage, users should not listen at high volume levels for long periods. Also, users should wear headphones that isolate the wanted audio from background noise. Parents should monitor duration of use and volume levels to ensure appropriate use by children.

PRODUCT SPECIFICATIONS

ECHO POP KIDS
Model Number: C2H4R9
Electrical Rating: 12.0V = 1.25A
Operating Temperature Range: 0–35°C (32–95°F)

FCC COMPLIANCE

This device complies with Part 15 of the FCC Rules. Operation is subject to the following two conditions:

- (1) This device may not cause harmful interference, and
- (2) This device must accept any interference received, including interference that may cause undesired operation.

The party responsible for FCC compliance is Amazon.com Services LLC
410 Terry Ave North, Seattle, WA 98109 USA. If you wish to contact Amazon visit www.amazon.com/devicesupport, select United States, click Help & Troubleshooting, then click on Contact Us.

Device Name: Echo Pop Kids
Model: C2H4R9

RECYCLING YOUR DEVICE PROPERLY

In some areas, the disposal of certain electronic devices is regulated. Make sure you dispose of, or recycle, your device in accordance with your local laws and regulations. For information about recycling your device, go to www.amazon.com/devicesupport.

ADDITIONAL SAFETY AND COMPLIANCE INFORMATION

For safety, compliance and other information regarding any device connected to your Echo Pop Kids, please consult the user manual and other information provided by the manufacturer of such smart home device.

Additional safety, compliance, recycling and other important information regarding your device can be found in the Alexa app under Help & Feedback > Legal & Compliance.

AMAZON TERMS & POLICIES

Echo Pop Kids is an Alexa-enabled device. Before using it, please read all applicable terms, rules, policies and usage provisions found in the Alexa app under Help & Feedback > Legal & Compliance and available at www.amazon.com/devicesupport (collectively, the "Agreements"). By using your Echo device, you agree to be bound by the Agreements. You can find Amazon's Privacy Notice at www.amazon.com/devicesupport and our Children's Privacy Disclosure at www.amazon.com/ChildPrivacyDisclosure.

LIMITED WARRANTY

Your new or Certified Refurbished Device is covered by a two year Limited Warranty. Details are available at www.amazon.com/devicewarranty.

ADDITIONAL INFORMATION

You can find the Customer Service contact information and other applicable terms and Device information (including in other languages) at www.amazon.com/devicesupport.



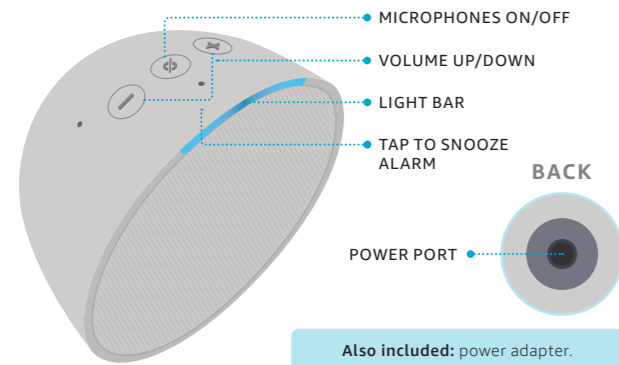
©2023 Amazon.com, Inc. or its affiliates. Amazon, Alexa, Echo, and all related marks are trademarks of Amazon.com, Inc. or its affiliates.

Hello

echo pop kids

OUTSIDE

MEET YOUR ECHO POP KIDS



SET UP YOUR ECHO POP KIDS



1. DOWNLOAD ALEXA APP FROM APP STORE

Log in with an existing Amazon account username and password, or create a new account.

Note: be sure to turn on your phone's Bluetooth and have your wifi password ready.



2. PLUG IN YOUR ECHO POP KIDS

Use the included power adapter. A blue light bar will flash on the device. In about a minute, Alexa will tell you to complete setup in the app.



3. FOLLOW SETUP IN THE APP

If you aren't prompted to set up your device after opening the Alexa app, tap the More icon to add your device manually. The app helps you get more out of your Echo Pop Kids. It's where you set up calling and messaging, and manage music, lists, settings, and news.

For help and troubleshooting, go to Help & Feedback in the Alexa app or visit [amazon.com/devicesupport](https://www.amazon.com/devicesupport).

MANAGE YOUR ECHO POP KIDS



INCLUDES AMAZON KIDS+

Amazon Kids+ included (auto-renews at applicable rate). Discover a world of kid-friendly Audible books, interactive games, and educational skills.

AMAZON PARENT DASHBOARD

To help your child get more out of their Echo Pop Kids, visit the Parent Dashboard at <https://parents.amazon.com> or in the Alexa app by selecting Amazon Kids in Settings.

With easy-to-use parental controls, you can review activity, manage time limits, share content, and more.

LEARN ABOUT THE LIGHT BAR



BLUE

Alexa is now listening.



RED

Microphones are off. Alexa can't hear you.



ORANGE

The device is in setup mode or trying to connect to the Internet.



PURPLE

Your device is in Do Not Disturb mode, or unable to connect to wifi during initial setup.



YELLOW

You have a new notification from a parent-approved contact. Say, "Alexa, read my notifications."



GREEN

Incoming call from a parent-approved contact. Say, "Alexa, answer the call."

PRIVACY AND SUPPORT



PRIVACY CONTROLS

Turn the microphones off by pressing the microphones on/off button. See when Alexa is recording and sending your request to Amazon's secure cloud via a blue indicator light.



MANAGE YOUR VOICE HISTORY

As a parent, you can view, hear, and delete the voice recordings associated with your account in the Alexa app at any time.



CUSTOMER SUPPORT

For help and troubleshooting, go to Help & Feedback in the Alexa app or visit [amazon.com/devicesupport](https://www.amazon.com/devicesupport).

You have control over your Alexa experience.
Explore more at [amazon.com/alexaprivacy](https://www.amazon.com/alexaprivacy).

THINGS TO TRY WITH ALEXA

Start by asking, "Alexa, what can you do?"
You can also stop a response at any time by saying "Alexa, stop."



PLAY THEIR FAVORITES

"Alexa, please play music."
"Alexa, let's play a game."



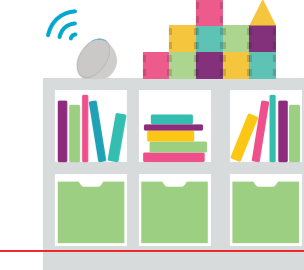
LEARN AND GROW

"Alexa, how tall is Mt. Everest?"
"Alexa, how do you spell beautiful?"



MAKE BEDTIME EASIER

"Alexa, read me a story."
"Alexa, set an alarm for 8 AM."



Some features may require customization in the Alexa app, a separate subscription, or an additional compatible smart home device. Certain skills and services may not be available in all languages. You can find more examples and tips in the Alexa app.

INSIDE

amazon
Lab126

Churro KEE
QSG-WSL US S3

US

OUTSIDE

Black
PANTONE 312 C
Matte AQ

INSIDE

CMYK
PANTONE 312 C
Matte AQ

FILE NAME 22-005018-01_Chur-KEE_QSG-WSL_US_S3.ai
DATE 06.28.23 BY AF
DIELINE 90 x 70mm, R0 BLEED 3.175mm
FOLD TYPE Accordion MATERIAL 157gsm C2S
LOGO churro-kee_Echo-Pop-Kids-WHT.ai