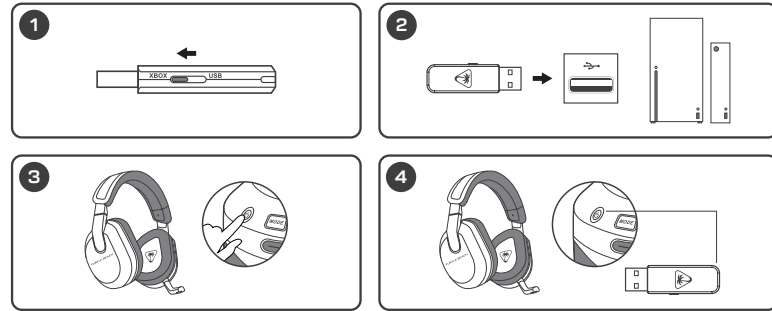


SETUP FOR XBOX® | CONFIGURATION POUR XBOX®

Xbox Version only



- EN**
1. Set the USB wireless transmitter to "Xbox" mode
 2. Connect the USB wireless transmitter to the USB-A port on Xbox
 3. Power on headset
 4. Wait for headset and USB wireless transmitter to pair

- FR**
1. Mettez l'émetteur sans-fil en mode « Xbox »
 2. Connectez l'émetteur sans-fil au port USB-A de la Xbox
 3. Allumez le casque
 4. Attendez que le casque et l'émetteur USB soient appariés

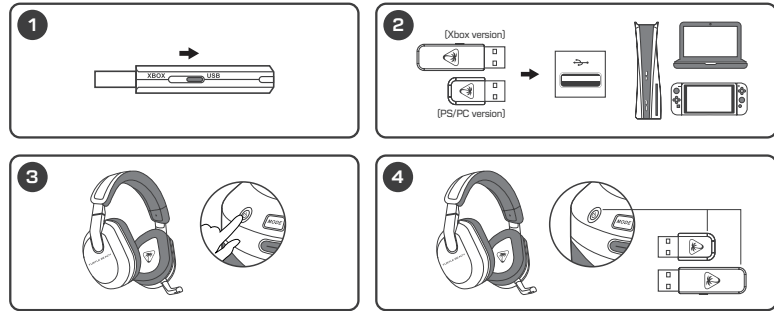
- DE**
1. Stelle den Funksender auf den Modus „Xbox“ ein
 2. Verbinde den kabellosen Sender mit dem USB-A Anschluss der Xbox
 3. Schalte das Headset ein
 4. Warte, bis Headset und USB Sender gekoppelt sind

- ES**
1. Configura el transmisor inalámbrico en el modo „Xbox“
 2. Conecta el transmisor inalámbrico al puerto USB-A de la Xbox
 3. Enciende los auriculares
 4. Espera a que se emparejen los auriculares y el transmisor USB

- JP**
1. ワイヤレストランスミッターを「Xbox」モードに設定します。
 2. ワイヤレストランスミッターをXboxのUSB-Aポートに接続します。
 3. ヘッドセットの電源を入れます。
 4. ヘッドセットとUSBトランスミッターがペアリングされるのを待ちます。

SETUP FOR PLAYSTATION®, PC AND NINTENDO SWITCH™

CONFIGURATION POUR PLAYSTATION®, PC ET NINTENDO SWITCH™



- EN**
1. Set the USB wireless transmitter to "USB" mode (Xbox version only – all other versions, please to step 2)
 2. Connect the USB wireless transmitter to the USB-A port on PlayStation®, PC or Nintendo Switch™
 3. Power on headset
 4. Wait for headset and USB wireless transmitter to pair

- FR**
1. Mettez l'émetteur sans-fil en mode « USB » (concome la version Xbox uniquement, pour toutes les autres versions, passez à l'étape 2)
 2. Connectez l'émetteur sans-fil au port USB-A de la PlayStation®, PC ou Nintendo Switch™
 3. Allumez le casque
 4. Attendez que le casque et l'émetteur USB soient appariés

- DE**
1. Stelle den Funksender auf den Modus „USB“ ein (nur Xbox-Version – alle anderen Versionen, fahre mit Schritt 2 fort)
 2. Verbinde den kabellosen Sender mit dem USB-A Anschluss von PlayStation®, PC oder Nintendo Switch™
 3. Schalte das Headset ein
 4. Warte, bis Headset und USB Sender gekoppelt sind

- ES**
1. Configura el transmisor inalámbrico en el modo „USB“ (solo en la versión para Xbox; en todas las demás versiones, ve al paso 2)
 2. Conecta el transmisor inalámbrico al puerto USB-A en PlayStation®, PC o Nintendo Switch™
 3. Enciende los auriculares
 4. Espera a que se emparejen los auriculares y el transmisor USB

- JP**
1. ワイヤレストランスミッターを「USB」モードに設定します(Xboxバージョンのみ、他のバージョンの場合はステップ2に進む)
 2. ワイヤレストランスミッターをPlayStation®、PC、Nintendo Switch™のUSB-Aポートに接続します。
 3. ヘッドセットの電源を入れます。
 4. ヘッドセットとUSBトランスミッターがペアリングされるのを待ちます。

Regulatory Compliance Statements for the STEALTH 600 GEN 3

[Wireless Gaming Headset – Headset Model: HWAAD001 & Dongle Model: HWAAD010]

Federal Communications Commission (FCC) Compliance Notices

Class B Interference Statement:
This equipment has been tested and found to comply with the limits for a Class B digital device, pursuant to Part 15, Subpart B of the FCC Rules. These limits are designed to provide reasonable protection against harmful interference in a residential installation. This equipment generates, uses, and can radiate radio frequency energy and, if not installed and used in accordance with the instructions, may cause harmful interference to radio communications. However, there is no guarantee that interference will not occur in a particular installation. If this equipment does cause harmful interference to radio or television reception, which can be determined by turning the equipment off and on, the user is encouraged to try to correct the interference by one or more of the following measures:

- Reorient or relocate the receiving antenna.
- Increase the separation between the equipment and receiver.
- Connect the equipment into an outlet on a circuit different from that to which the receiver is connected.
- Consult the dealer or an experienced radio/TV technician for help.

FCC Caution:
This device complies with Part 15 of the FCC Rules. Operation is subject to the following two conditions: (1) This device may not cause harmful interference, and (2) this device must accept any interference received, including interference that may cause undesired operation. This product is compliant with the Consumer Product Safety Improvement Act of 2008, Public Law 110-314 (CPSIA)

CANADA-statement
This device complies with Innovation, Science and Economic Development Canada's licence-exempt RSS(s). Operation is subject to the following two conditions:

- (1) This device may not cause interference; and
- (2) This device must accept any interference, including interference that may cause undesired operation of the device.

Le présent appareil est conforme aux CNR d'Innovation, Sciences et Développement économique Canada exemptés de licence(s) applicables aux appareils radio exempts de licence. L'opération est autorisée aux deux conditions suivantes:

- (1) l'appareil ne doit pas produire de brouillage;
- (2) l'utilisateur de l'appareil doit accepter tout brouillage radioélectrique subi, même si le brouillage est susceptible d'en compromettre le fonctionnement.

Radiation Exposure Statement:
The product complies with Canada portable RF exposure limits set forth for an uncontrolled environment and are safe for intended operation as described in this manual. The further RF exposure reduction can be achieved if the product can be kept as far as possible from the user body or set the device to lower output power if such function is available.

Le produit est conforme aux limites d'exposition pour les appareils portables RF pour les États-Unis et le Canada établies pour un environnement non contrôlé. Le produit est sûr pour un fonctionnement tel que décrit dans ce manuel. La réduction aux expositions RF peut être augmentée si l'appareil peut être conservé aussi loin que possible du corps de l'utilisateur ou que le dispositif est réglé sur la puissance de sortie la plus faible si une telle fonction est disponible.

For warranty information and service, please visit www.turtlebeach.com/warranty

WARRANTY SERVICE FOR PURCHASES IN AUSTRALIA
Our goods come with guarantees that cannot be excluded under the Australian Consumer Law. For complete details please visit www.turtlebeach.com/warranty.

To make a warranty claim in Australia during the Warranty Period, Purchaser should contact the VTB repair centre: Technics International Pty Ltd, 13 Distribution Place, Seven Hills NSW 2147, Tel: 1300 074 512

European Union and European Fair Trade Association (EFTA) Regulatory Compliance

Declaration of Conformity
Marking by this symbol:

Hereby, Voyetra Turtle Beach, Inc. declares that **Stealth 600 Gen 3** Headset Model: HWB0001 & Dongle Model: HWAAD001 & HWAAD010 is in compliance with Directive 2014/30/EU(EMC), 2014/53/EU(RED), 2014/25/EU(Safety), 2016/863 amending Annex II to 2011/65/EU(RoHS), 2012/19/EU (WEEE), 2006/19/7/EU (REACH), 94/92/EEU (PACKAGING), 2006/66/ EU (Battery), Electromagnetic Compatibility Regulations 2016(EMC), Radio Equipment Regulations 2017(Radio), Electrical Equipment Regulations 2016(Safety), The Restriction of the Use of Certain Hazardous Substances in Electrical and Electronic Equipment Regulations 2012.

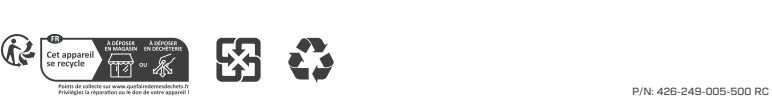
The full text of the EU/UK declaration of conformity is available at the following internet address: <http://www.turtlebeach.com/homologation>

Radio frequency: 2400MHz
Operating frequency: 2400–2483.5MHz
Max. Output power: 4 dBm

This symbol on the product or its packaging indicates that this product must not be disposed of with your other household waste. Instead, it is your responsibility to dispose of your waste equipment by handing it over to a designated collection point for the recycling of waste electrical and electronic equipment. The separate collection and recycling of your waste equipment at the time of disposal will help conserve natural resources and ensure that it is recycled in a manner that protects human health and the environment. For more information about where you can drop off your waste for recycling, please contact your local authority, or where you purchased your product.

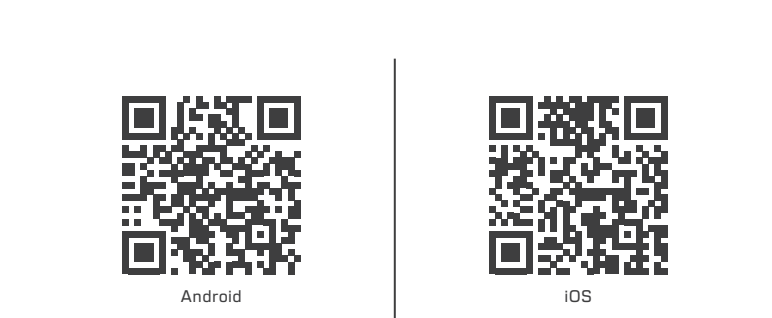
Copyright © 2024, Voyetra Turtle Beach, Inc. All rights reserved. No part of this document may be reproduced without permission. Any product names mentioned in this guide may be trademarks or registered trademarks and are the property of their respective owners.

この製品は、クラスB規格です。この製品は、自宅環境で使用することを目的としていますが、この製品がラジオやテレビジョン受信機に近接して使用されると、受信障害を引き起こすことがあります。取扱説明書に従って正しい取り扱いをして下さい。 VCCI-B



IMPORTANT | IMPORTANT

PLEASE MAKE SURE YOUR HEADSET IS UPDATED WITH THE LATEST FIRMWARE. VEUILLEZ VOUS ASSURER QUE VOTRE CASQUE DISPOSE DE LA DERNIÈRE VERSION DU MICROLOGICIEL.



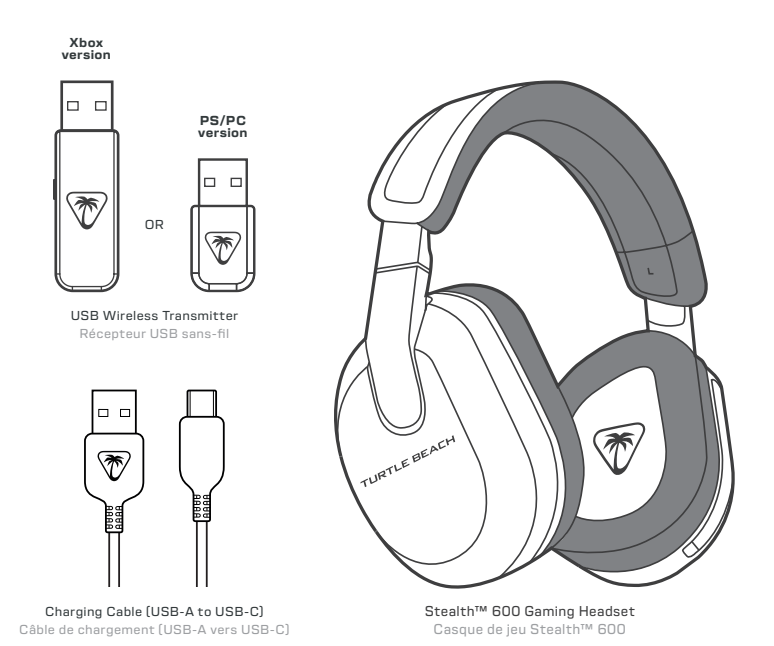
Download the Swarm™ II mobile app for Android or iOS to update your headset to the latest firmware and customize settings.

Alternatively, you can use the Swarm™ II desktop software for Windows available at turtlebeach.com/swarm2

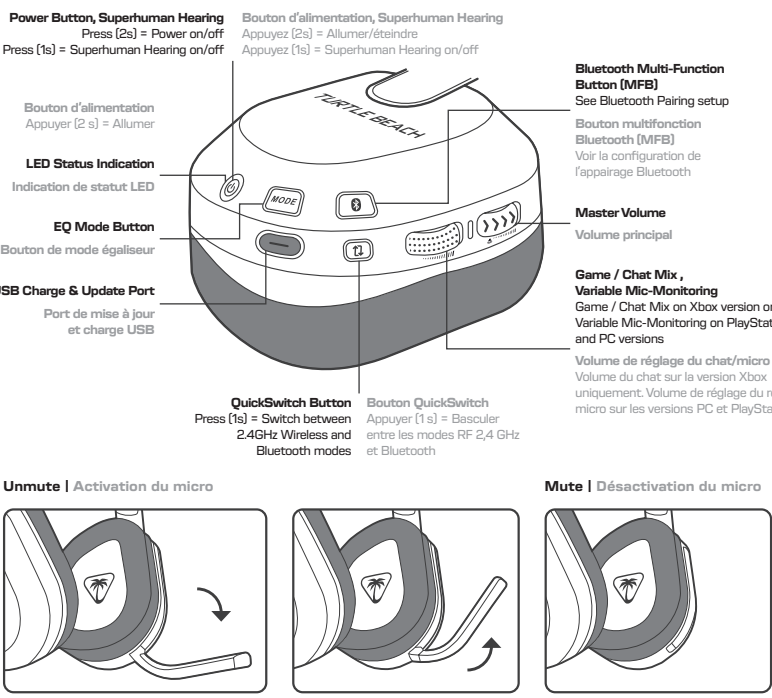
Téléchargez l'application mobile Swarm™ II pour Android ou iOS afin de mettre votre casque à jour avec la dernière version du micrologiciel et de personnaliser les paramètres.

Vous pouvez également utiliser le logiciel Swarm™ II pour Windows, disponible sur turtlebeach.com/swarm2

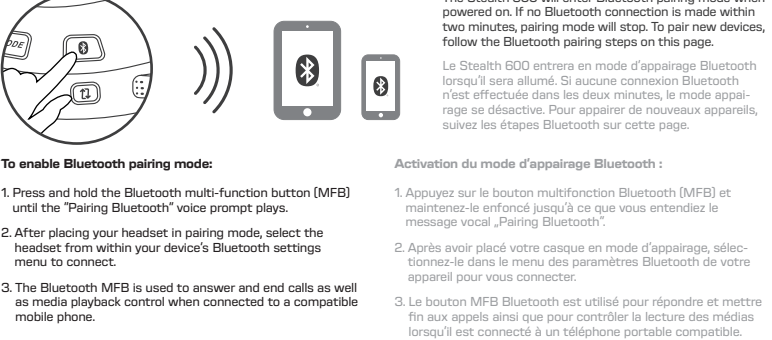
PACKAGE CONTENTS | CONTENU



HEADSET CONTROLS | COMMANDES DU CASQUE

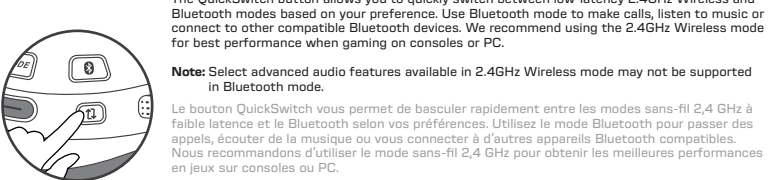


BLUETOOTH SETUP | CONFIGURATION BLUETOOTH



When the headset is connected using the USB wireless transmitter in the default 2.4GHz Wireless mode, incoming calls can be answered by single pressing the Bluetooth MFB. The headset will automatically switch back to 2.4GHz Wireless mode when the call is ended by single pressing the Bluetooth MFB again.

QUICKSWITCH BUTTON | BOUTON QUICKSWITCH



Remarque : Certaines fonctions audio avancées disponibles en mode sans-fil 2,4 GHz peuvent ne pas être prises en charge en mode Bluetooth.

STEALTH™ 600

QUICK START GUIDE

GUIDE DE DÉMARRAGE RAPIDE

IMPORTANT
READ BEFORE USING

IMPORTANT
LIRE AVANT UTILISATION

STEALTH 600 GEN 3
CERTIFICATION MODEL:
HEADSET: HWAAD001
DONGLE: HWAAD010

TURTLE BEACH™

Any questions? Des questions?
www.turtlebeach.com/support

Please register your product to receive important updates. Enregistrez votre produit pour recevoir les mises à jour importantes.
www.turtlebeach.com/productregistration

For warranty, visit:
Concernant la garantie, visitez :
www.turtlebeach.com/warranty