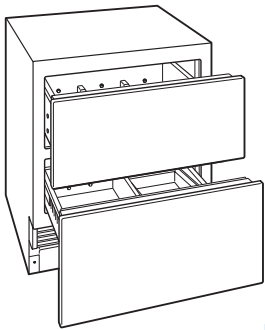


## FEATURES

- Upper refrigerator storage drawer and lower freezer storage drawer.
- Custom front panels and hardware allow for infinite design options.
- Integrated design allows for dual installation and point-of-use refrigeration.
- Interactive smart-touch control panel.
- Smooth-glide, full-extension refrigerator drawer and freezer drawer, both with adjustable dividers.
- Drawer alarm and smart home features.
- Automatic ice maker with max ice feature temporarily increases production (ID-30CI).



Model ID-30CI



### MODEL OPTIONS

Combination	ID-30C
Ice Maker	ID-30CI

### INTERIOR FEATURES

#### REFRIGERATOR

Adjustable drawer dividers

#### FREEZER

Adjustable drawer divider(s)  
Removable ice container (ID-30CI)  
Automatic ice maker (ID-30CI)

### ACCESSORIES

- Stainless steel front panels with tubular or pro handles.
- Stainless steel tubular and pro handles.
- Dual installation kit.
- Stainless steel kickplate.
- Air deflector for reduced toe kick.
- Dozen egg container.

Accessories available through an authorized Sub-Zero dealer. For local dealer information, visit the find a showroom section of our website, subzero.com.

**SPECIFICATIONS**

**PRODUCT**

Dimensions 30"W x 34<sup>1</sup>/<sub>2</sub>"H x 24"D  
 Weight 210 lb

**CAPACITY**

Refrigerator 3.0 cu ft  
 Freezer 2.0 cu ft

**ELECTRICAL**

Supply 115 VAC, 60 Hz  
 Service 15 amp circuit

**PLUMBING**

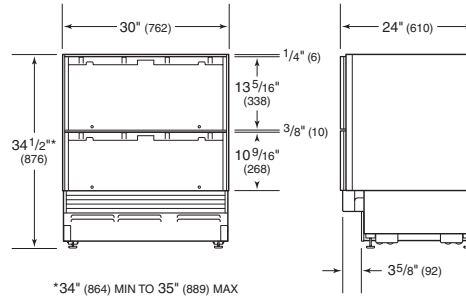
Supply 1/4" OD copper, braided stainless steel or PEX tubing  
 Pressure 35–120 psi

Product dimensions do not include panels or handles and will vary with panel thickness. Allow for panel thickness when planning the finished opening depth.

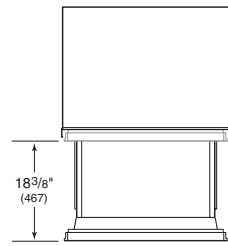
Specifications are subject to change without notice. Visit [subzero.com/specs](http://subzero.com/specs) for the most up-to-date information.

Dimensions may vary ±1/8" (3). Dimensions in parentheses are millimeters unless otherwise specified.

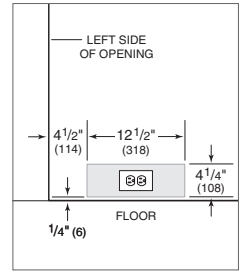
**DIMENSIONS**



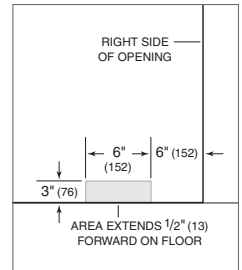
\*34" (864) MIN TO 35" (889) MAX



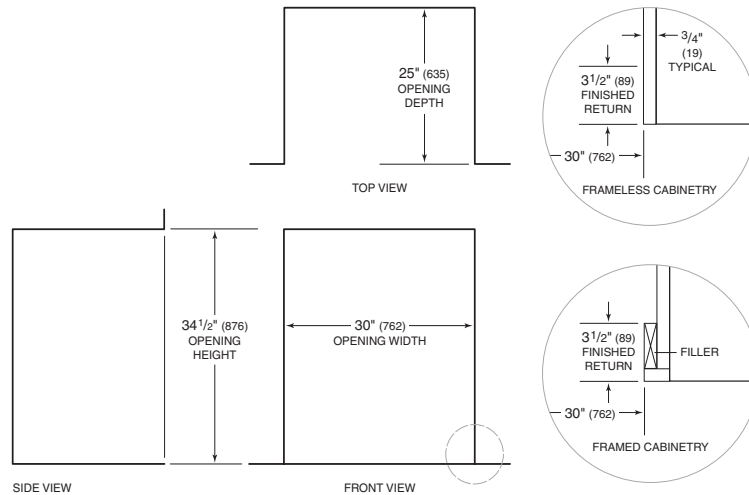
**ELECTRICAL**



**PLUMBING**



**INSTALLATION**



NOTE: 3 1/2" (89) finished returns will be visible and should be finished to match cabinetry.