



SHARP
Be Original.

Simply Better Living

QUICK CONNECT GUIDE

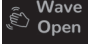
Smart Radiant Rangetop with
Microwave Drawer™ Oven
MODEL STR3065HS



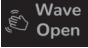
HOW TO ACTIVATE EASY WAVE OPEN FUNCTION

Note: Easy Wave Open is **OFF by default** when plugged in.

EASY WAVE OPEN ON

- Easy Wave Open operates by touching the  button, and then the display reads **EASY WAVE OPEN ON** PRESS START. You must press start to activate.
- To use the Easy Wave Open function, simply wave your hand twice in front of the sensor in consecutive motions. This can be up and down or side to side motions.

EASY WAVE OPEN OFF

- Easy Wave Open operates by touching the  button, and then the display reads **EASY WAVE OPEN OFF** PRESS START. You must press start to activate.
- When Control Lock is activated, the Easy Wave Open Function is off.



HOW TO CONNECT AND PAIR YOUR APPLIANCE TO THE SHARP KITCHEN APP

1. GETTING STARTED

- Download the **Sharp Kitchen** App on the App Store® or Google Play.



- Launch the Sharp Kitchen App and sign in or create a Sharp account.
*If you already have a Sharp account, enter credentials and select **(SIGN IN)**.

If you do not have a Sharp account, select **(CREATE ACCOUNT)** and follow the on-screen instructions. A verification email will be sent to your registered email address. Please verify email within 24 hours, otherwise account registration will need to be restarted.

2. BEFORE YOU BEGIN

- Ensure your mobile device is connected to a 2.4 GHz Wi-Fi network and **disable Auto-Reconnect / Auto-Join** for any other home networks previously setup on your device.
- Ensure that your chosen Wi-Fi network has a good signal strength in the area where you installed your Smart Radiant Rangetop with Microwave Drawer™ Oven.
- Please have your home network Wi-Fi name (SSID) and password readily available.

3. PAIRING YOUR APPLIANCE

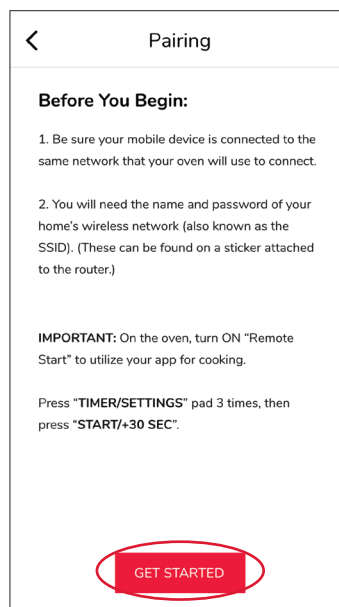
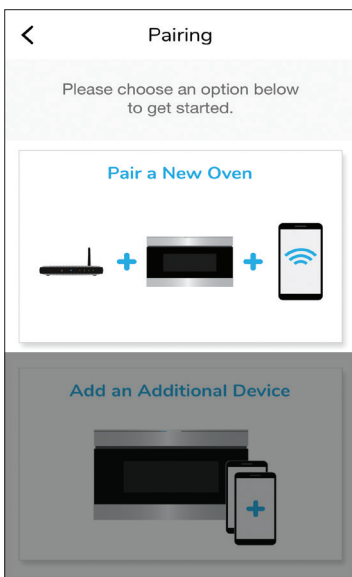
- Launch the **Sharp Kitchen** app and sign in. Follow instructions below to connect your Smart Radiant Rangetop with Microwave Drawer™ Oven to the Internet, then pair your app to your appliance.

IN THE APP

- Click on the "+" symbol in the upper right corner.
- Click on "Combi Ovens"
- If you are pairing your Smart Radiant Rangetop with Microwave Drawer™ Oven for the first time select **[Pair a New Oven]** on your mobile device.

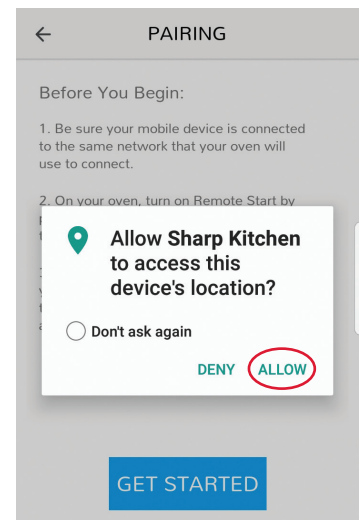
**Note: Please turn on Remote Start before pairing your oven.
Press [TIMER/SETTINGS] 3 times and then press [START/+30 SEC] key.**

- After completing the following tasks select **[GET STARTED]** on your mobile device.



Android™

- Press **[ALLOW]** to continue pairing.



ON YOUR OVEN

- Press and hold the **"WiFi"** pad for 3 seconds until you hear a beep. The oven will display **TOUCH ENABL- ING WIFI ENABL- ING WIFI WIFI ON NOW IN AP MODE**



IN THE APP

- Then press **[NEXT]**.



IN THE APP

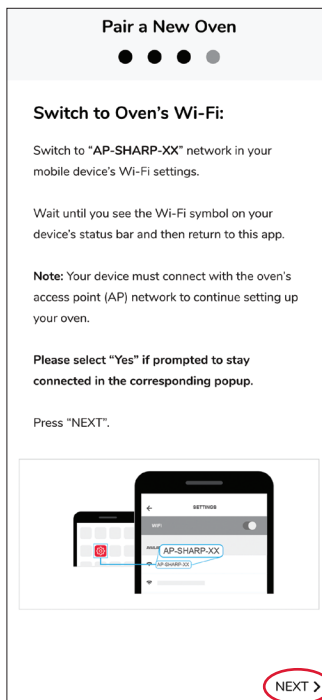
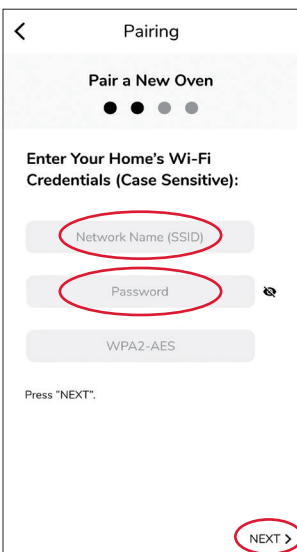
Please enter your:

- Home Network Name (SSID)
- Home Network Password (SSID Password)
- Then press **[NEXT]**.
- Go to the Wi-Fi Settings on your mobile device.
- Click **AP-SHARP-XX** on your mobile devices Wi-Fi Setting.

Please wait until the Wi-Fi symbol displays on the mobile device's status bar before returning to the app.

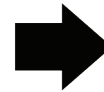
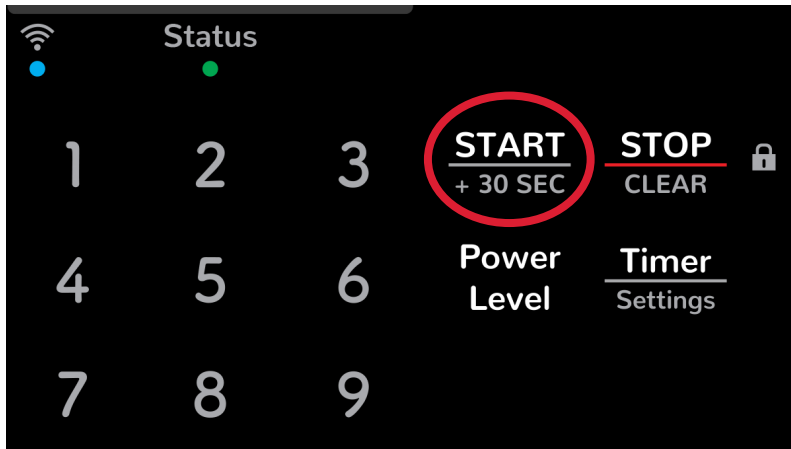
Wait until you see **CONNEC- TION SUCCESS -FUL** on the oven's display. The solid blue Wi-Fi light will turn on.

- Then press **[NEXT]**.
- Then press **[NEXT]**.



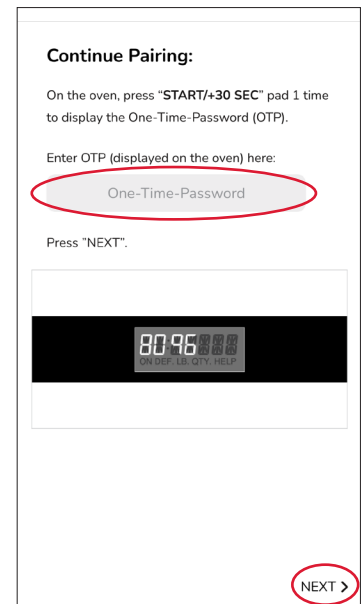
ON YOUR OVEN

- After your oven is successfully paired press **[START]** button to display a **One-Time-Password (OTP)**.



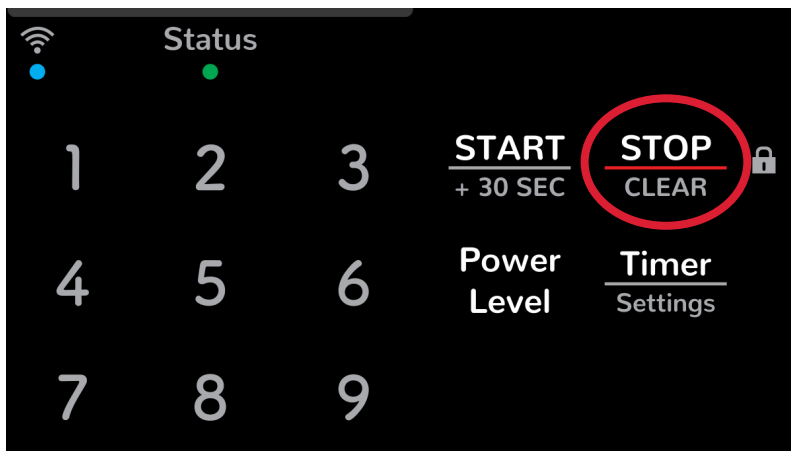
IN THE APP

- Enter the One-Time-Password displayed on the oven and press **[NEXT]**.



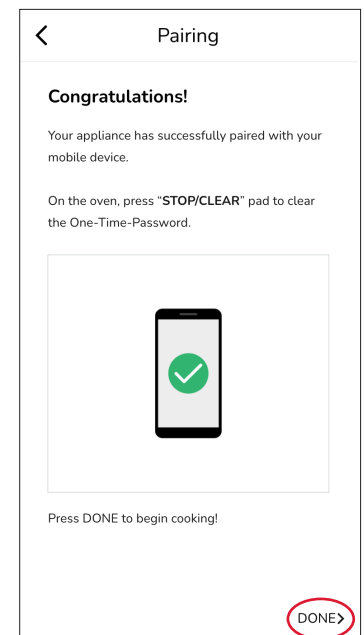
ON YOUR OVEN

- On the oven press **[STOP/CLEAR]** button to clear the One-Time-Password.



IN THE APP

- Then press **[DONE]** to complete pairing.



TROUBLESHOOTING

My app is not compatible with my device.	Please make sure your mobile device is updated to the latest software available.
I tried pairing my oven and it displayed "WI-FI OFF. TOUCH CLEAR."	Go back to initial pairing screen and select "Pair a New Oven" not "Add an Additional Device."
I cannot connect my device to the oven.	Double check that you entered your home network's SSID and password correctly. Remember both are case sensitive. Your mobile device has to be on the same home wireless network as the oven when pairing.
My app is displaying a "Network Error!" Message	Please make sure your wireless network is working and your Internet connection is active.
My oven's Wi-Fi Network is not found by my device.	Make sure your oven is in AP Mode. Press and hold ' 0 ' (zero) or WiFi Pad for three second until you hear a beep.
Incorrect entry of OTP (One-Time-Password)	Please check that the OTP (One-Time-Password) displayed on the oven matches the OTP entered in the app.
Connection Failed displayed on oven display panel.	Ensure Wi-Fi signal strength is strong and router is located near the oven.
I have successfully paired but cannot open my Microwave Drawer™ Oven.	Enable Remote Start by pressing [TIMER/SETTINGS] button 3 times and then press [START/+30 SEC] .

STILL NEED ASSISTANCE?



EMAIL
Available 24/7
US: sharpusa.com



CHAT ONLINE
Mon-Fri: 7am-7pm CST
Sat-Sun: 9am-7pm CST



CALL US
US **800-BE-SHARP**
800-237-4277
Mon-Fri: 7am-7pm CST
Sat-Sun: 9am-7pm CST

See the Contact Us section on our website

U.S. | www.sharpusa.com/support

Contact a Sharp Advisor on the phone

Simply Better Living

At Sharp Home Electronics Company of America, we are committed to Simply Better Living.

Our innovative home appliances are simple to use, better than the competition and encourage a healthy lifestyle. Our Simply Better Living Blog is dedicated to simple, creative solutions for living your best life. Every day we share tips, recipes, life-hacks and articles with our readers along with a weekly newsletter of the latest stories you don't want to miss. It's all about the food you eat and the air you breathe. Welcome home.

<http://sbl.sharppusa.com> or <http://simplybetterliving.sharppusa.com>

Scan the QR code below to sign up to receive the weekly Simply Better Living newsletter.



FOLLOW @SHARPHOMEUSA



SHARP®

Be Original.

| Simply Better Living

SHARP ELECTRONICS CORPORATION
100 Paragon Drive, Montvale NJ, 07645
1.800.237.4277 • www.shop.sharppusa.com

© 2022 Sharp Electronics Corporation. All rights reserved.

Sharp and all related trademarks are trademarks or registered trademarks of Sharp Corporation and/or its affiliated companies. All other trademarks are property of their respective owners.

Apple and iPhone are trademarks of Apple Inc., registered in the U.S. and other countries.

Android and Google Play are trademarks of Google LLC.